

PRESBYTERIAN COLLEGE LIBRARY



3 5197 00118866 6





JONES SOUTH CAROLINIANA

OUT OF INTEREST IN
THE HISTORY OF
SOUTH CAROLINA

PRESENTED
AND
FOSTERED
BY

DUDLEY JONES

TO THE

PRESBYTERIAN COLLEGE

378.157P4

14052

711-1937





The Pac Sac
nineteen.thirty.seven

copyright
1937

Joseph E. Patrick

E d i t o r

James K. Collings

B u s i n e s s

M a n a g e r

Published Annually
By The Students Of
PRESBYTERIAN
COLLEGE
Clinton
South Carolina

The Pac Sac

Dedication

To President Jacobs—because he exemplifies the P. C. Spirit—because he is building a greater P. C. for the future—and because he has led his Alma Mater safely through a troublesome period—this volume is dedicated with affectionate esteem.



Appreciation

To Major Wysor — because in eight years of loyal service he has developed the most valuable asset the college can claim—a military unit whose accomplishments have spread the fame of Alma Mater far and wide, a unit whose name means much in military circles—we wish to express the deep appreciation of students, alumni, and faculty.



Contents

The College

Athletics

Military

Sponsors

Features

Fraternities

Organizations

Advertisements

Foreword

—11

In presenting this, the twenty-fourth volume of The PaC SaC it has been the aim of the editors to portray life at P. C. as it really exists. It is our sincere hope that this book may be the source of much pleasure to you in the years that lie ahead.

*“It is . . . a small college
And yet there are those who love it.”*

—DANIEL WEBSTER.



The College

















Administration



MARSHALL WALTON BROWN
B.A., M.A.

Centre College; University of Wisconsin;
University of Vienna

Dean



JOHN HOLLAND HUNTER
B.A.

Presbyterian College

Business Manager

• • the Pac Sac nineteen

thirty-seven •

Twenty

• the Pac Sac nineteen
thirty-seven •



ALMON EDWIN SPENCER
B.A., M.A., LL.D.

Centre College

Vice-President

LILLIAN GROSS BROWN

Tennessee College

Registrar





BRIMM
STURGEON

WOODWORTH
GRAHAM

JONES
HUNTLEY

KENNEDY
WHITELAW

DANIEL JOHNSON BRIMM
B.A., M.A., D.D.
Southwestern Presbyterian University;
Columbia Seminary
Professor of Bible

MALCOLM G. WOODWORTH
B.A., M.A., D.D.
Hampden-Sidney College; Union Seminary
Professor of English

FRANK DUDLEY JONES
B.A., D.D.
Davidson College; Columbia Seminary
Professor of Psychology

JAMES BOYD KENNEDY
B.A., M.A., Ph.D.
Erskine College; Johns Hopkins
University
Professor of Economics

HARRY ELWYN STURGEON
B.S., M.S.
Sterling College; Purdue University;
University of Chicago
Professor of Chemistry

BOTHWELL GRAHAM, JR.
B.A., M.A.
University of Georgia; Harvard University;
American Academy of Rome
Professor of German

STEPHEN McQUEEN HUNTLEY
B.A., M.A., DOCTEUR D' UNIVERSITE
University of South Carolina;
Toulouse University
Professor of French

NEILL GORDON WHITELAW
B.A., M.A., Ph.D.
Miami (Oxford, Ohio) University;
University of Wisconsin
Professor of Physics

The Pace Year nineteen

the Pac Sac nineteen
 teen thirty-seven



WYSOR
 SPENCER

HARDING
 LONG

FISH
 BAKER

BOYD
 YOUNG

ROBERT E. WYSOR
 Major of Infantry, U. S. A.
 Virginia Military Institute; United States
 Infantry School
Professor of Military Science and Tactics

FLOYD C. HARDING
 Major of Infantry, U. S. A.
 University of Iowa; United States
 Infantry School
*Assistant Professor of Military Science
 and Tactics*

HAROLD SOMERS FISH
 B.A., Ph.D.
 Bowdoin College; Harvard University
Professor of Biology

BERNARD HENRY BOYD
 B.A., Th.B., M.A.
 Presbyterian College; Princeton Theological
 Seminary; Princeton University
Assistant Professor of English

H. EARL SPENCER
 B.S., M.A., Ph.D.
 University of Rochester; Cornell University
Professor of Mathematics

JAMES K. LONG
 B.S., M.A., Ph.D.
 University of North Carolina; Columbia Uni-
 versity; George Peabody College for
 Teachers
Professor of Education

KENNETH NORTON BAKER
 B.A., M.A.
 University of South Carolina; Walton School
 of Commerce; Midwestern School of
 Commerce
Associate Professor of Economics

STERLIN YOUNG
 Sergeant, Detached Enlisted Men's List
Assistant in Military Science and Tactics



JONES
FOREHAND

JOHNSON
MRS. HUNTER

McMILLIAN
MRS. ADAIR

WALDREP
HOLMAN

MISS MCKEE

WILLARD LEONARD JONES
B.A., B.S.
Presbyterian College; University of North
Carolina; Columbia University
Librarian

LONNIE SEXTON McMILLIAN
B.A.
Pre-byterian College; University of Illinois
Assistant Director of Physical Education

ROY WILKINSON FOREHAND
B.S.
Presbyterian College
Physical Education Department

MRS. WILLIAM ADAIR
B.A.
Winthrop College
Secretary

WALTER A. JOHNSON
Battle Creek College; University of Wisconsin;
University of Illinois; Northwestern
University
Director of Physical Education

FRANK BUREN WALDREP
B.A.
Presbyterian College
Physical Education Department

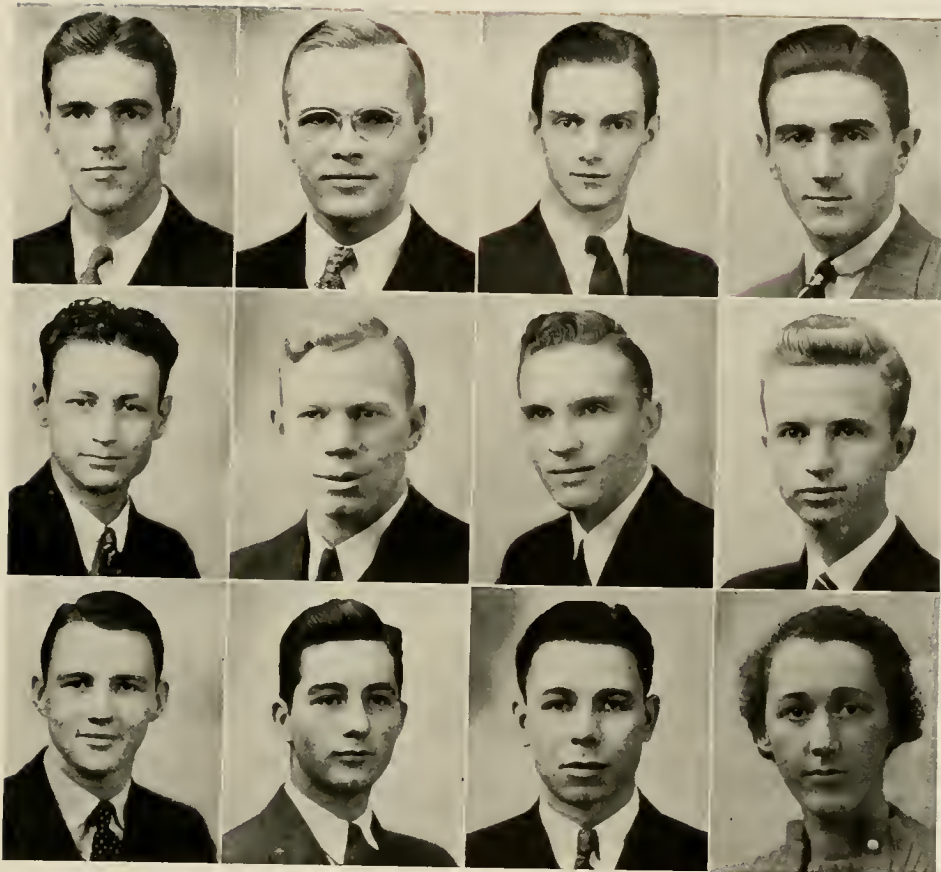
MRS. MYRTLE HUNTER
Dietitian

CLARENCE HUGH HOLMAN
B.S.
Presbyterian College
Director of Publicity

MISS KATHERINE MCKEE
Secretary

the Pac Sac nineteen thirty-seven

the Pac Sac nineteen
 teen thirty-seven



SHOEMAKER
 NORTON
 McALPINE

PATRICK
 Cappelmann
 WITHERSPOON

JOHNSTON
 JOHNSON
 CROKER

STOWELL
 McINTOSH
 SPRATT

STUDENT ASSISTANTS

- R. A. Shoemaker
Chemistry
- R. H. Stowell
Biology
- C. E. Johnson
Psychology
- J. A. Witherspoon
Library

- J. E. Patrick
Chemistry
- M. E. Norton
Bible
- W. K. McIntosh
Economics
- S. Croker
Library

- F. R. Johnston
Chemistry
- C. M. Cappelmann
German
- J. R. McAlpine
Library
- Frances Spratt
Library

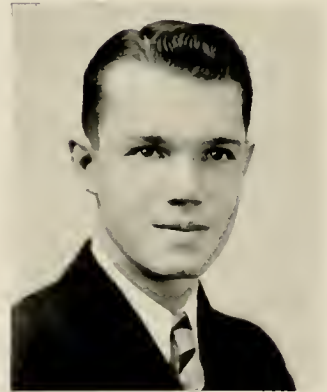
SENIOR CLASS OFFICERS



E. W. EVANS
President



J. E. PATRICK
Vice-President

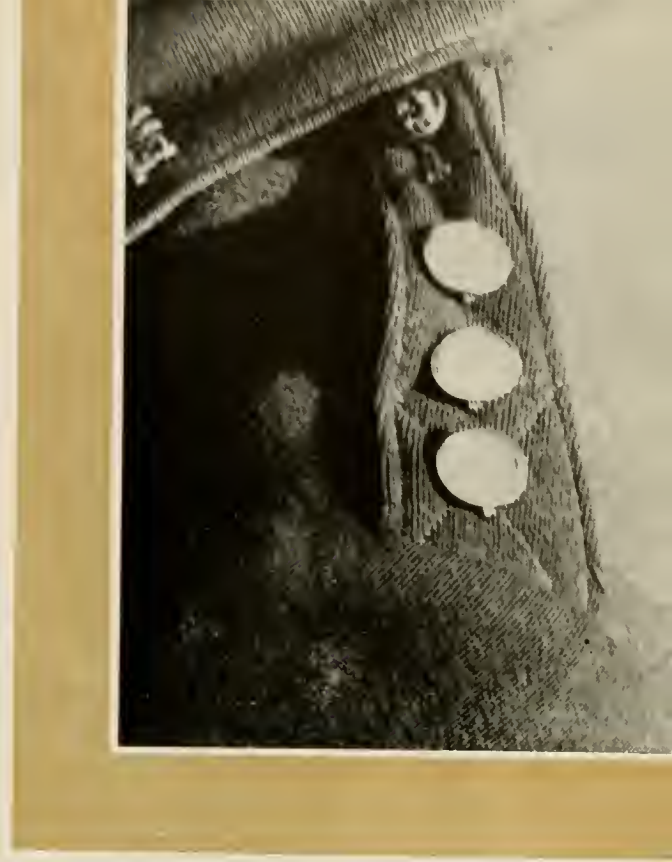


H. T. HARVIN
Secretary

• • the Pac Sac nineteen

• thirty-seven •

Twenty-six



Seniors



GLENN W. BEEMAN
A.B.

CLINTON, S. C.

Freshman Football, '33; Varsity Football,
'34, '35, '36; Block P Club.



MARION WYLIE BIRD
B.S.

COLUMBIA, S. C.

Alpha Kappa Pi, Musketeers

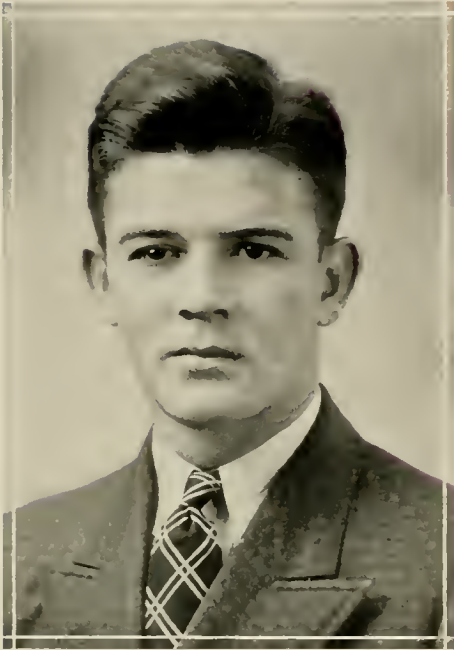
Freshman Football, '33; Freshman Basketball, '33; Freshman Baseball, '33; Varsity Football, '34, '35, '36; Varsity Baseball, '35, '36; Advertising Manager Blue Stocking, '36; Business Manager, '36; Corporal, R.O.T.C., '34; Sergeant, '35; First Lieutenant, '36; Y. M.C.A. Cabinet, '35, '36.

the Paean Sac nineteen

Twenty-eight

thirty-seven

• the Pac Sac nineteen
thirty-seven •



ELMORE SMITH BUCHAN
A.B.

MULLINS. S. C.

Beta Kappa. I. R. C.

Pan-Hellenic Council, '36: Vice-President.

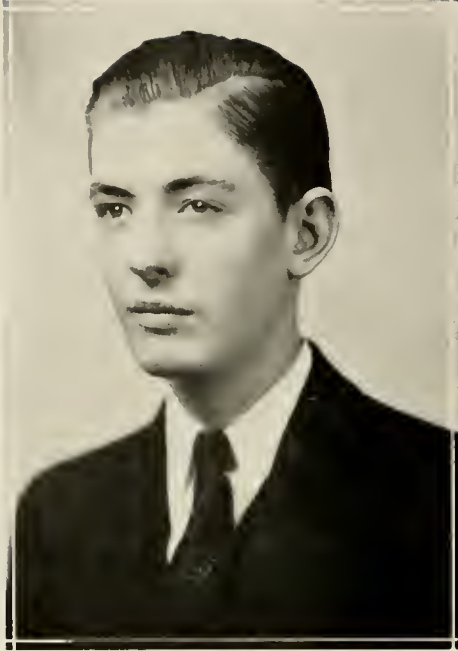
RALPH MILLER CALDWELL
A.B.

GAFFNEY. S. C.

Beta Kappa

Transfer from Limestone College, '36.





STUART BLAND CAMPBELL, JR.
A.B.

WYTHEVILLE, VA.

*Alpha Kappa Pi, Blue Key, I. R. C.,
Sigma Kappa Alpha, Sigma Upsilon.*

The Collegian Staff, '34, '35, Editor, '36;
Blue Stocking Staff, '35, '36; President, Sigma
Kappa Alpha; Pan-Hellenic Council, '35,
'36; Board of Publications Control; Student
Advisory Council.



CLAUDE M. CAPPELMANN
A.B.

PARRIS ISLAND, S. C.

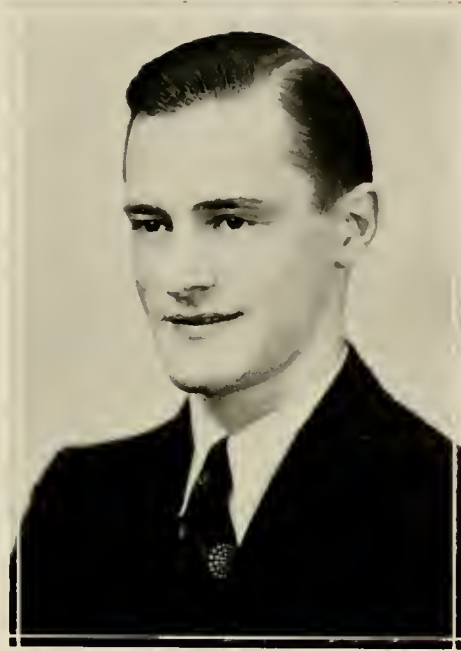
Alpha Kappa Pi, Blue Key

Freshman Football, '33; Freshman Boxing,
'33; Varsity Football, '34, '35, '36; Varsity
Track, '34; Varsity Boxing, '34; Captain, '35,
'36; Collegian Staff, '36; President Sopho-
more Class, '34; Block P Club; Assistant in
German and Spanish.

• • • the Pac Sac nineteen

• • • *thirty* • • • *thirty-seven* •

• the Pac Sac nineteen
thirty-seven •



ROBERT L. CLARK
B.S.

UNION, S. C.

Pi Kappa Phi

Band, '31; '35, '36, '37; R.O.T.C., Corporal, '35; Orchestra, '34, '35, '36, '37; Assistant Director of Music, '37.

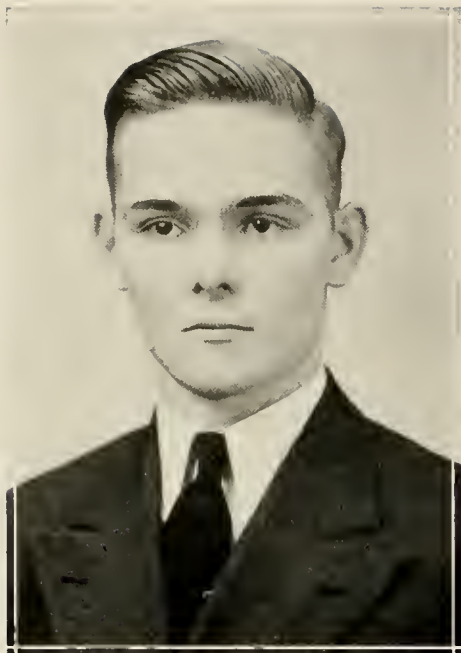
GEORGE L. CLECKLER

A.B.

MENLO, GA.

Freshman Basketball, '34; Varsity Basketball, '35, '36, '37; Block P Club.





WALLACE LELAND COE
A.B.

SARASOTA, FLA.

Freshman Baseball, '33; Varsity Baseball, '34, '35, '36; Block P Club; Assistant in English, '34, '35.

JAMES KENT COLLINGS
A.B.

ATLANTA, GA.

Beta Kappa. Blue Key, I. R. C.

Freshman Football, '33; Freshman Track, '33; Varsity Football, '34, '35, '36; Varsity Baseball, '35; Blue Stocking Staff, '36; Business Manager, The PaC SaC, '36; Corporal, R.O.T.C., '34; Sergeant, '35; Lieutenant Colonel, '36; Secretary-Treasurer Blue Key, '36; Student Council, '33, '34; Secretary, '35; Vice-President, '36; Student Advisory Committee; President, Freshman Class, '33; Glee Club, '33, '34; Manager, '35, President, '36; Block P Club; Y.M.C.A. Cabinet, '33, '34, '35, '36; Secretary-Treasurer, '35; "Who's Who in American Colleges and Universities", '37.



• the PaC SaC nineteen

• the Pac Sac nineteen thirty-seven •



VICTOR C. CORRELL
A.B.

YORK, S. C.

Freshman Football, '32; Freshman Track, '33; Freshman Baseball, '33; Varsity Football, '33, '35, '36; Varsity Track, '36; Varsity Baseball, '36; Block P Club.

A. C. CROSS
A.B.

CROSS, S. C.

Varsity Baseball, '35; Transfer from University of South Carolina, '35.



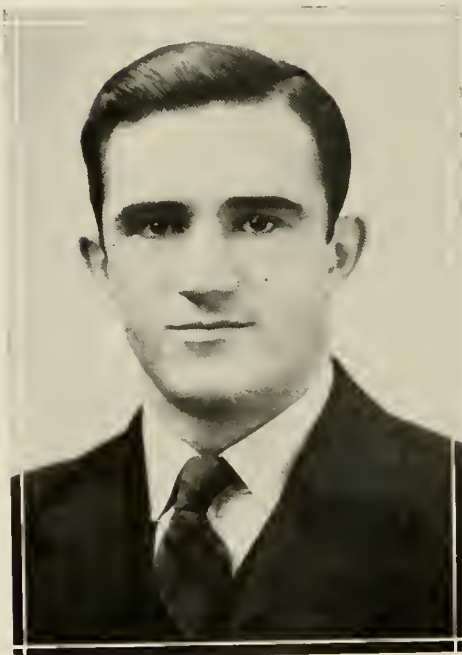


W. M. DEGNER
A.B.

LAKE MILLS, WISCONSIN

Pi Kappa Phi

Varsity Football, '34, '35, '36; Varsity Basketball, '35; Y.M.C.A. Cabinet, '35; Block P Club; Transfer from University of Wisconsin, '34.



ERNEST W. EVANS
B.S.

IVA, S. C.

Alpha Lambda Tau, Blue Key, Chi Beta Phi.

Freshman Football, '33; Freshman Basketball, '33; Varsity Football, '34, '36; Varsity Basketball, '35; Varsity Baseball, '31, '35, '36; The PaC SaC Staff, '36; Corporal, R.O.T.C., '34, Sergeant, '35, First Lieutenant, '36; Secretary-Treasurer Junior Class, '35; President Senior Class, '36; Block P Club, President, '36; Student Advisory Council.

• • the PaC SaC nineteen

thirty-four
thirty-seven •

• the Pac Sac nineteen
thirty-seven • •



J. BROWNE EVANS, JR.
B.S.

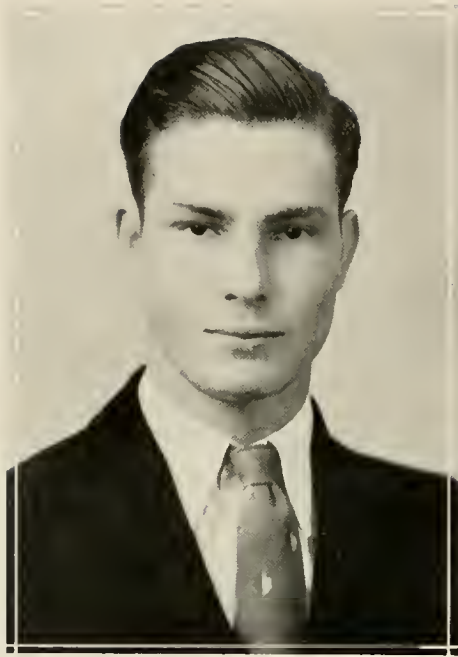
ST. PAULS, N. C.

Transfer from Presbyterian Junior College,
'35.

H. C. GARRETT
B.S. in Commerce
LANFORD STATION, S. C.

Guidon Bearer, R.O.T.C., '35; Le Club
Francais, '35; Band, '36; Y.M.C.A. Cabinet,
'36; Assistant Superintendent Maintenance of
College Property, '35; Assistant in French,
'35; Manager College Canteen, '36.





WILLIAM ERVIN GREEN
A.B.

LANCASTER, S. C.

Alpha Kappa Pi

Manager Freshman Track, '34; Varsity Track, '35, '37; Varsity Football, '36; Block P Club.



HARRY THORNTON HARVIN
B.S.

MANNING, S. C.

Kappa Alpha

Freshman Football, '33; Freshman Baseball, '33; Varsity Baseball, '34, '35, '36; Block P Club; Pan-Hellenic Council, President, '35.

• • the Pac Sac nineteen thirty-seven •

Thirty-six

• the Pac Sac nineteen
thirty-seven •



NED HAYS
B.S.

CLINTON, S. C.

Pi Kappa Phi

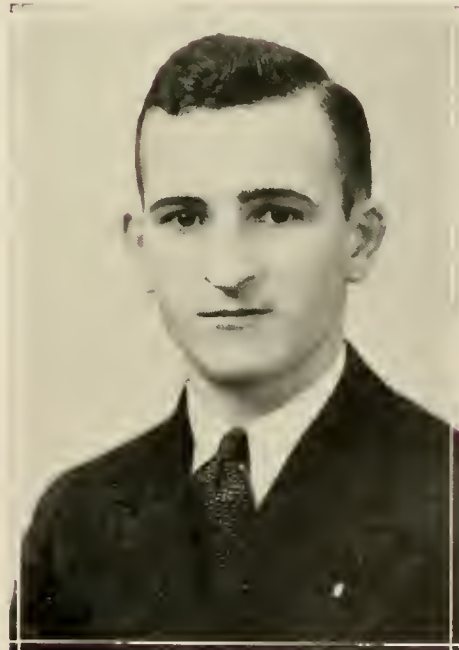
Attended Emory University, '35; transferred to P. C. '36.

JOHN DOUGLAS HUGHES
A.B.

HOMERVILLE, GA.

Pi Kappa Alpha

Varsity Baseball, '36; Glee Club, '36, '37; Assistant Business Manager, The Collegian, '37; transferred from Emory Junior College, '36.





JOHN C. HUTCHINSON
B.S.

POINT PLEASANT, WEST VA.

Pi Kappa Phi

Freshman Football, '35; Varsity Football,
'34, '35, '36.



J. B. JACOBS
B.S.

CLINTON, S. C.

Freshman Football, '33; Freshman Track,
'34; Varsity Football, '34, '35, '36; Captain,
Football, '36; All-State Fullback, '36; Track,
'35, '36, '37; Captain, '37; R.O.T.C., Cor-
poral, '34; Sergeant, '35; Major, '36; Block
P Club.

• • the Dec Sac nine
teen thirty-seven •

Thirty-eight

• the Pac Sac nineteen thirty-seven •



MONTAGUE HERMAN JACOBS
A.B.

KINGSTREE, S. C.

Beta Kappa

Freshman Football, '33; Varsity Football, '34, '35, '36; Varsity Baseball, '34; Color Guard, R.O.T.C., '35; Block P Club; transfer from Clemson College, '33.

CARL E. JOHNSON, JR.
B.S.

CHESTER, S. C.

Beta Kappa

Band, '34, '35; Assistant in Psychology, '36.





T. B. A. JONES

A.B.

SENECA, S. C.

Pi Kappa Phi



WILLIAM CHESTER KELLER

A.B.

GREENVILLE, S. C.

Delta Chi Alpha, Blue Key

Freshman Basketball, '35; Collegian Staff, '35, '37; Corporal, R.O.T.C., '35. Sergeant, '36; National President Delta Chi Alpha, '37; Ministerial Club, '31, '35, '36; President of Y.M.C.A., '36; Y.M.C.A. Cabinet, '31, '35, '36; Student Advisory Committee; Cheer Leader, '36; Block P Club; Finished in three years.

• • the Pac See nineteen

teen thirty-seven •

Forty

● the Pac Sac nineteen
 thirty-seven ● ●



WILLIAM JAMES LANGSTON
 A.B.

CONWAY, S. C.

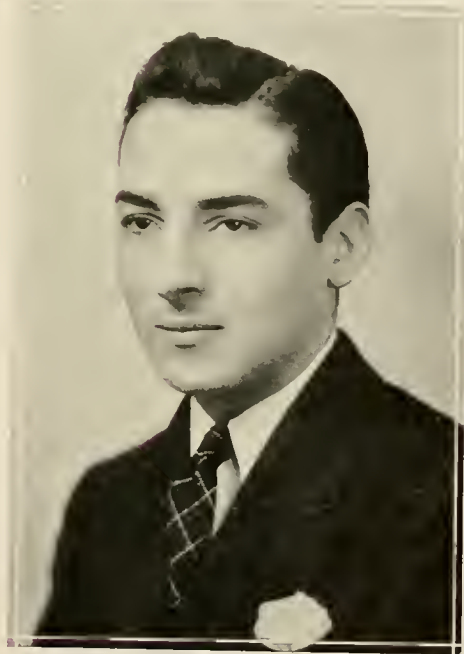
Freshman Swimming, '34; Freshman Boxing, '34; Varsity Swimming, '35; Varsity Track, '36; Corporal, R.O.T.C., '34; Sergeant, '35; First Lieutenant, '36; Board of Publications Control; Block P Club.

BEN WARNER LEGARE
 A.B.

NORTH CHARLESTON, S. C.

Pi Kappa Phi, Musketeers

Freshman Swimming, '34; Varsity Swimming, '35; Blue Stocking Staff, '36, '37; The PaC SaC Staff, '35, '36, '37; Corporal, R.O.T.C., '34; Sergeant, '35; Captain, '36; President Musketeers, '36; Assistant in South Carolina History, '36.





FRANKLIN SADLER LOVE
A.B.

ROCK HILL, S. C.

Pi Kappa Phi, Blue Key, Sigma Upsilon.

Freshman Track, '34; Blue Stocking Staff, '33, '34, '35. Editor, '36; Collegian Staff, '33, '34. Managing Editor, '35. Associate Editor, '36; PaC SaC Staff, '34, '35. Associate Editor, '37; Corporal, R.O.T.C., '34; Vice-President Blue Key, '36; Historian Senior Class, '37; Board of Publications Control; Student Advisory Committee; "Who's Who in American Colleges and Universities."



J. R. McALPINE, III
A.B.

HARTSVILLE, S. C.

Pi Kappa Alpha, Blue Key

Freshman Track, '34; Cross Country Team, '33; Business Manager The Collegian, '37; Secretary-Treasurer Freshman Class, '33; Glee Club, '34, '35, '36, '37; Y.M.C.A. Cabinet, '35. Secretary-Treasurer, '36; Head Cheer Leader, '36; Deputation Team, '37; Assistant in Bible, '34; Assistant in The Library, '35, '36; Block P Club.

• • the Pac Sac nineteen

Forty-two

teen thirty-seven •

● the Pac Sac nineteen *thirty-seven* ● ●



W. K. McINTOSH, JR.

B.S. in Commerce

KINGSTREE, S. C.

Kappa Alpha

Band, '33, '34; Orchestra, '31, '35, '36, '37;
Economics Assistant.

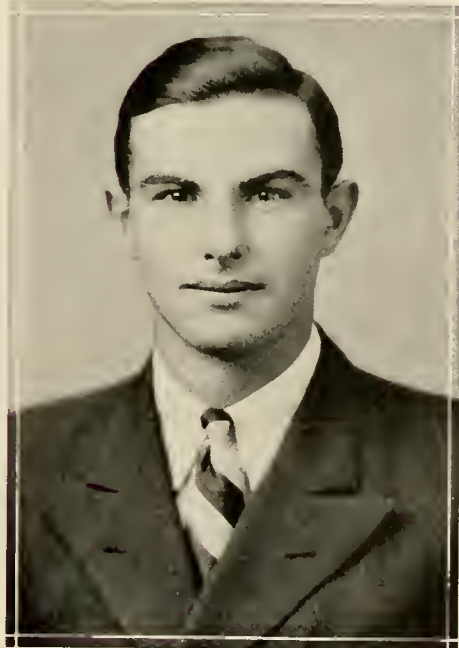
ALLEN CREWS McSWEEN

A.B.

CHESTER, S. C.

Pi Kappa Alpha

Freshman Football, '33; Freshman Track, '34; Varsity Football, '34, '35; Varsity Swimming, '35; Corporal, R.O.T.C., '35; First Sergeant, '36; Block P Club; attended United States Military Academy, '36.





JAMES P. MAJORS
A.B.

MENLO, GA.

Freshman Basketball, '33; Varsity Basketball, '35, '36; Blue Stocking Staff, '32; R.O.T.C., Corporal, '34; Sergeant, '35; First Lieutenant, '36.



DALTON MILLER MANN

B.S.

BURLINGTON, N. C.

Beta Kappa. Chi Beta Phi

Freshman Tennis, '34; Band, '34, '35, '36; Orchestra, '35, '36, '37; Glee Club, '34, '35, '36; R.O.T.C., Sergeant, '36; First Lieutenant, '37; Blue Stocking Staff, '35.

• • the Pac Sac nineteen

Forty four
thirty-seven •

● the Pac Sac nineteen thirty-seven ● ●



SAMUEL BUCHANAN MARKS

B.S.

COLUMBIA, S. C.

Manager Freshman Football, '35; Manager Varsity Football, '36; Assistant in Biology, '35; Block P Club. (Finished First Semester, '37.)

ODELL ATWOOD MATTHEWS, JR.

A.B.

BENNETTSVILLE, S. C.





MARY MOTES
A.B.

LAURENS, S. C.

Alpha Psi Delta



TOM NEWLAND
A.B.

KWANGJU, KOREA

I. R. C.

Varsity Fencing, '37; President, I. R. C., '37; Dramatic Club, '35; Vice-President, '36; Band, '34, '35, '36; Glee Club, '34, '35, '36; Y.M.C.A. Cabinet, '31, '35, '36; Assistant Manager College Canteen; Assistant in French.

• • the Pac Sac nine

teen thirty-seven •

Forty-six

• the Pac Sac nineteen thirty-seven •



MALCOLM E. NORTON
B.S.

DILLON. S. C.

I. R. C., Chi Beta Phi

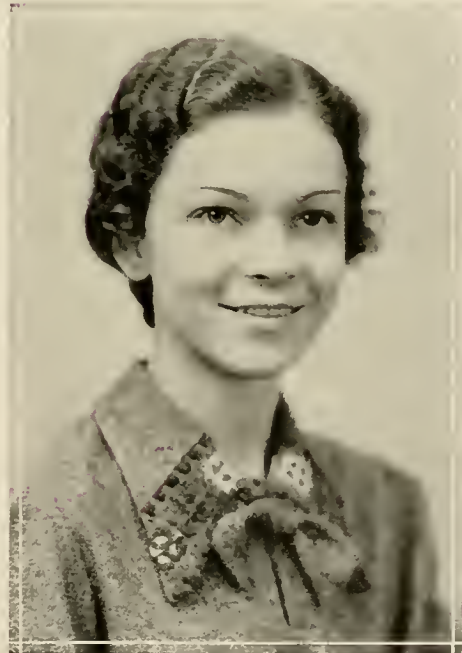
Manager Varsity Swimming. '35; Athletic Trainer. '36; PaC SaC Staff. '37; Y.M.C.A. Cabinet, '34; Assistant in Bible; Athletic Council, '35. '36; Block P Club.

MARY ELLA OSMAN
A.B.

CLINTON. S. C.

Kappa Delta, Chi Delta Phi. Alpha Psi Delta

Transferred to P. C. 1936; College of William and Mary; Lime-stone College; Georgia State College for Women; Richmond Medical College; Assistant in English.





LAVAL MALONE PARHAM
A.B.

LATTA, S. C.

Beta Kappa

Transferred from the University of South
Carolina. '34.



MARION H. PARHAM
A.B.

LATTA, S. C.

Beta Kappa

Freshman Tennis, '34; Varsity Tennis, '35.
'36; Co-Captain, '37; Block P Club.

• • the Pac Sac nineteen

thirty-seven •

Forty-eight

• the Pac Sac nineteen thirty-seven •••



JOSEPH ERNEST PATRICK
B.S.

COVINGTON, GA.

Pi Kappa Alpha, Blue Key, Sigma Kappa Alpha, Gamma Sigma, Musketeers.

Manager Varsity Baseball, '35, '36; Rifle Team, '35, '36; Captain, '37; R.O.T.C., Corporal, '35; Sergeant, '36; Captain, '37; Blue Stocking Staff, '33, '34; Managing Editor, '35; Associate Editor, '36; Collegian Staff, '33; Editor, The PaC SaC, '37; Board of Publications Control; Assistant in Chemistry; Student Council, '37; President, Blue Key, '37; Pan-Hellenic Council, '37; Block P Club; Vice-President Senior Class; "Who's Who in American Colleges and Universities."

J. B. PENLAND
A.B.

COLUMBIA, S. C.

Alpha Lambda Tau

Freshman Basketball, (Carolina); Blue Stocking Staff, '35, '36, '37; Sports Editor, '36, '37; PaC SaC Staff, '36, '37; Pan-Hellenic Council; Secretary-Treasurer, '37; transferred from the University of South Carolina, '31.





ALFRED JUDSON PLOWDEN, JR.

A.B.

SUMMERTON, S. C.

Pi Kappa Alpha

Freshman Football, '31; Varsity Football, '32, '34, '35; Varsity Baseball, '34, '35, '36; R.O.T.C., First Lieutenant, '36; Assistant Freshman Coach, '37; Block P Club.



GEORGE E. PLUNKETT, JR.

B.S.

CONYERS, GA.

Chi Beta Phi. Musketeers

Y.M.C.A. Cabinet, '34; The PaC SaC Staff, '35, '36, '37; Glee Club, '33, '34, '35, '36; R. O.T.C., Color Sergeant, '36; Captain, '37; Band, '33.

• • the PaC Sac nineteen thirty-seven •

fifty

• the Pac Sac *nineteen*
thirty-seven • •



ROSWELL KING PORTER

A.B.

CLINTON, S. C.

FLOYD ERNEST PROPST, JR.

B.S.

WINNSBORO, S. C.

Kappa Alpha

Freshman Swimming, '34; Manager Varsity
Boxing, '36, '37; Blue Stocking Staff, '35, '36,
'37; Block P Club.





LEE SINCLAIR QUARTERMAN

B.S.

CHARLESTON, S. C.

Pi Kappa Alpha

Freshman Football, '32; Varsity Football, '33, '34, '35; Freshman Basketball, '33; Varsity Basketball, '34; Rifle Team, '35, '36; R. O.T.C., Corporal, '34, Sergeant, '35, First Lieutenant, '36; Assistant Freshman Coach, '37; Block P Club.



JULIA FRANCES SHAW

A.B.

HONEA PATH, S. C.

Alpha Psi Delta

Sock and Buskin, '36, '37; transferred from Erskine College, '35.

• • the Pac Sac nineteen thirty-seven •

Fifty-two

the Pac Sac nineteen thirty-seven



RALEIGH A. SHOEMAKER

A.B.

CHARLOTTE. N. C.

Pi Kappa Alpha. Blue Key, Chi Beta Phi.

Freshman Football, '33; Freshman Swimming, '33; Varsity Football, '34, '35, '36; Rifle Team, '37; R.O.T.C., First Sergeant, '36; Captain, '37; Secretary-Treasurer, Sophomore Class; Student Council, '35, '36, '37; President of Student Body, '37; Y.M.C.A. Cabinet, '37; Chairman of Student Advisory Committee; Band, '33, '34, '35; Orchestra, '33, '34, '35, '36; Block P Club; Assistant in Chemistry; "Who's Who in American Colleges and Universities."

STEWART PEDEN SMITH

A.B.

FOUNTAIN INN. S. C.

I. R. C.

Sock and Buskin, '36, '37; French Club, '35; Y.M.C.A. Cabinet, '37; Assistant in History.





FRANCES KILLIAN SPRATT

A.B.

CLINTON, S. C.

Alpha Psi Delta

Assistant in the Library; Member Student
Advisory Committee, Blue Stocking Staff, '37.



JOHN WILLIAM STEENBERGEN

A.B.

POINT PLEASANT, WEST VA.

Pi Kappa Phi

Varsity Football, '34, '35, '36; Block P
Club; transferred from Marshall College, '34.

• • the Dec Sac nineteen thirty-seven •

the Pac Sac nineteen
thirty-seven



JOHN T. SUGGS
A.B.

DARLINGTON, S. C.

Freshman Football, '33; Varsity Baseball, '35, '36; Captain, '37; R.O.T.C., Sergeant, '36; First Lieutenant, Staff, '37; Band, '34, '35; Block P Club.

JAMES WILLIAM THOMPSON
B.S.

CAMDEN, S. C.

Pi Kappa Phi, Musketeers

Freshman Football, Captain, '33; Freshman Track, '34; Varsity Football, '34, '35. Alternate Captain, '36; Varsity Track, '35, '36, '37; R.O.T.C., Corporal, '35; First Sergeant, '36; Captain, Adjutant, '37; Block P Club.





FURMAN TOWNSEND WALLACE

B.S.

CHESTER, S. C.

Kappa Alpha, Chi Beta Phi

Freshman Football, '33; Swimming, '34; Varsity Football, '34, '35, '36; Varsity Swimming, '35; Orchestra, '31, '35, '36, '37; Band, '31, '35, '36; Glee Club, '34, '35, '36, '37; R.O.T.C., Sergeant, '36, First Lieutenant, '37; Declamation Winner, '34; Block P Club.



WILLIAM ROBERT WALLACE, JR.

B.S.

CHESTER, S. C.

Kappa Alpha

Freshman Swimming, '34; Varsity Swimming, '35; PaC SaC Staff, '35; Blue Stocking Staff, '34, '35; Class Historian, '34, Poet, '35; Student Publications Committee, '36; Block P Club.

the PaC SaC nineteen

• the Pac Sac nineteen
thirty-seven •



FURMAN V. WEATHERS
A.B.

GRAY COURT, S. C.

Freshman Basketball, '34; Varsity Basketball, '34, '35; Biology Assistant; Economics Assistant.

LAWRENCE DAVIS WELDON
A.B.

DALZELL, S. C.

Pi Kappa Alpha

Varsity Football, '35, '36; Varsity Baseball, '36, '37; Block P Club; Vice-President, '37; transferred from Louisburg Junior College, '35.





WALTER WILLIAMS
A.B.

CLINTON, S. C.

Freshman Track, '34; Varsity Track, '35,
'36, '37; R.O.T.C., Sergeant, '35; First Lieu-
tenant, '37; Block P Club.



EVA WILSON
A.B.

LAURENS, S. C.

Alpha Psi Delta

• • the Pac Sac nineteen

teen thirty-seven •

Fifty-eight

• the Pac Sac nineteen *thirty-seven* • •



MYRA LONG WISE
A.B.

TRENTON, S. C.

Alpha Psi Delta, I. R. C.

• Sock and Buskin: transferred from Coker College. '35.

R. R. YOW
B.S.

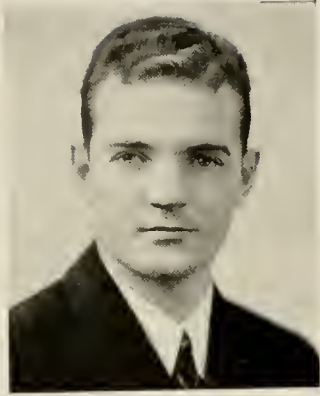
MARTIN, GA.

Alpha Kappa Pi

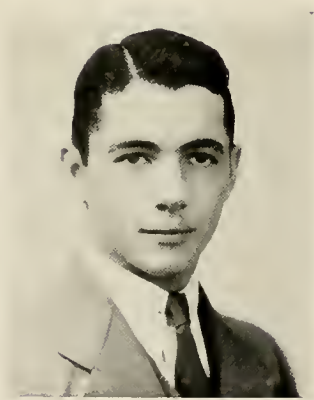
• Manager, Varsity Baseball, '37; Blue Stocking Staff, '34, '35; Business Manager, '36; Block P Club.



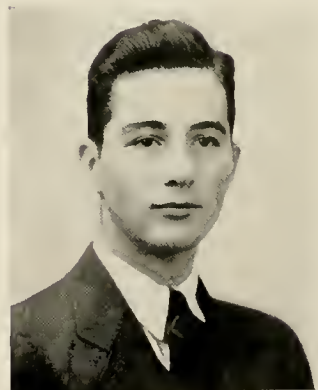
JUNIOR CLASS OFFICERS



HARRIS GRAY
President



JOHN WOODWARD
Vice-President



JACK WITHERSPOON
Secretary

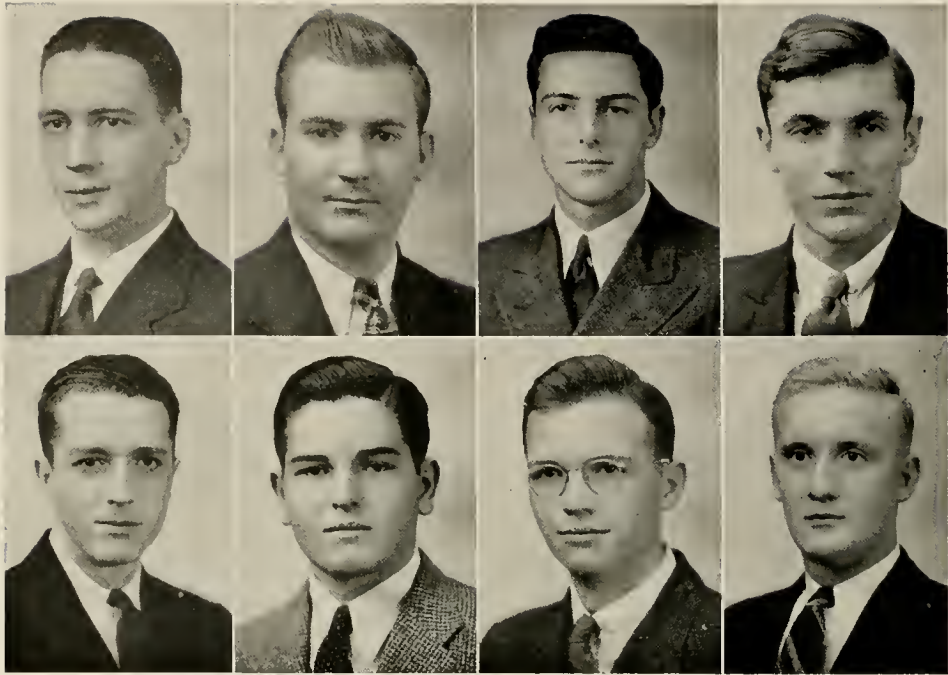
• • the Pac Sac nineteen thirty-seven •

Sixty

teen thirty-seven •



Juniors



ADDISON
BLACKWELL

ANDERSON
BLALOCK

BEATTY
BRIGGS

BEEMAN
BROWN

T. E. Addison
Goldville, S. C.
Kappa Alpha

C. L. Anderson
Lake City, S. C.
Pi Kappa Phi

G. S. Beatty, Jr.
Ft. Leavenworth, Kansas
Kappa Alpha

W. Beeman
Clinton, S. C.

William Blackwell
Florence, S. C.
Alpha Lambda Tau

H. F. Blalock
Clinton, S. C.
Pi Kappa Phi

A. J. Briggs
Landrum, S. C.

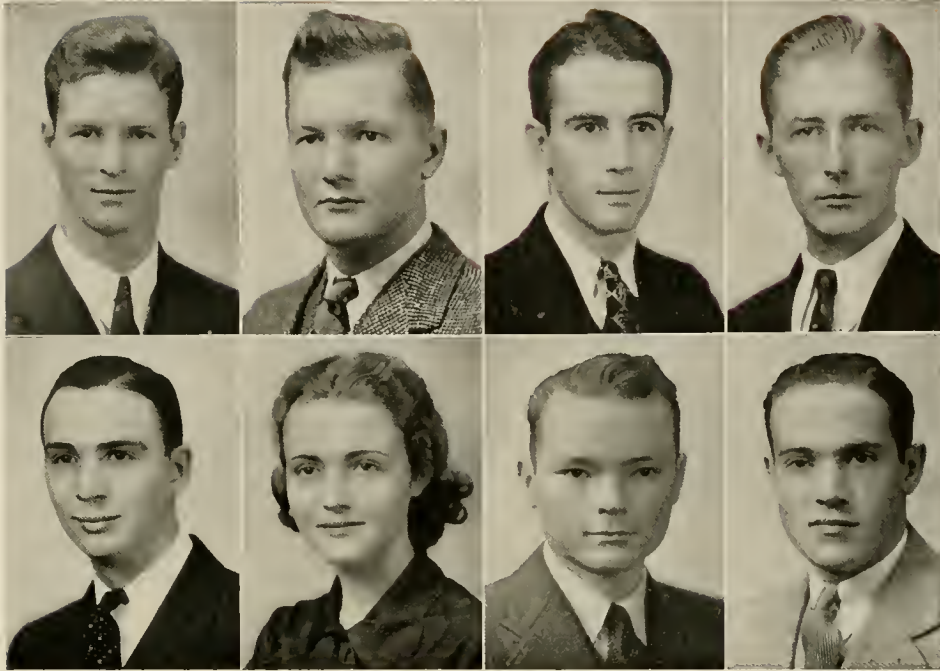
H. P. Brown, Jr.
Lanes, S. C.
Kappa Alpha

the Pac Sac nineteen thirty-seven

Sixty-two

the Pac Sac nineteen thirty-seven

• the Pac Sac nineteen thirty-seven •



BURNS
CAVIN

CALDWELL
CHANDLER

CARPENTER
CLARK

CARTLEDGE
COLE

W. P. Burns
Macon, Ga.
Pi Kappa Alpha

J. S. Caldwell, Jr.
Chester, S. C.
Kappa Alpha

H. B. Carpenter
Greenville, S. C.
Kappa Alpha

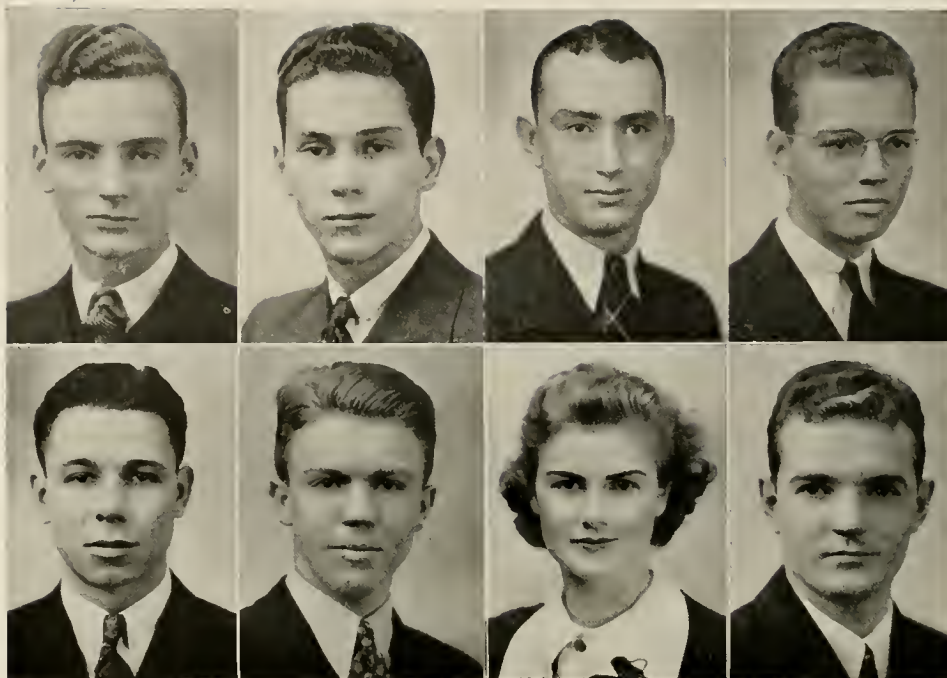
A. H. Cartledge
North Augusta, S. C.

J. C. Cavin
Menlo, Ga.

Reta Chandler
Clinton, S. C.
Alpha Psi Delta

W. M. Clark
Laurens, S. C.

N. Cole
Chinquapin, N. C.



COMMANDER
CROKER

CONRAD
DARBY

COX
DILLARD

CREECH
GRAY

J. M. Commander
Florence, S. C.
Pi Kappa Phi

C. D. Conrad
Clinton, S. C.

W. K. Cox
Woodruff, S. C.
Alpha Kappa Pi

N. O. Creech
Moultrie, Ga.
Kappa Alpha

S. Croker
Clinton, N. C.
Alpha Kappa Pi

A. K. Darby
Fort Motte, S. C.

Bebe Dillard
Clinton, S. C.
Alpha Psi Delta

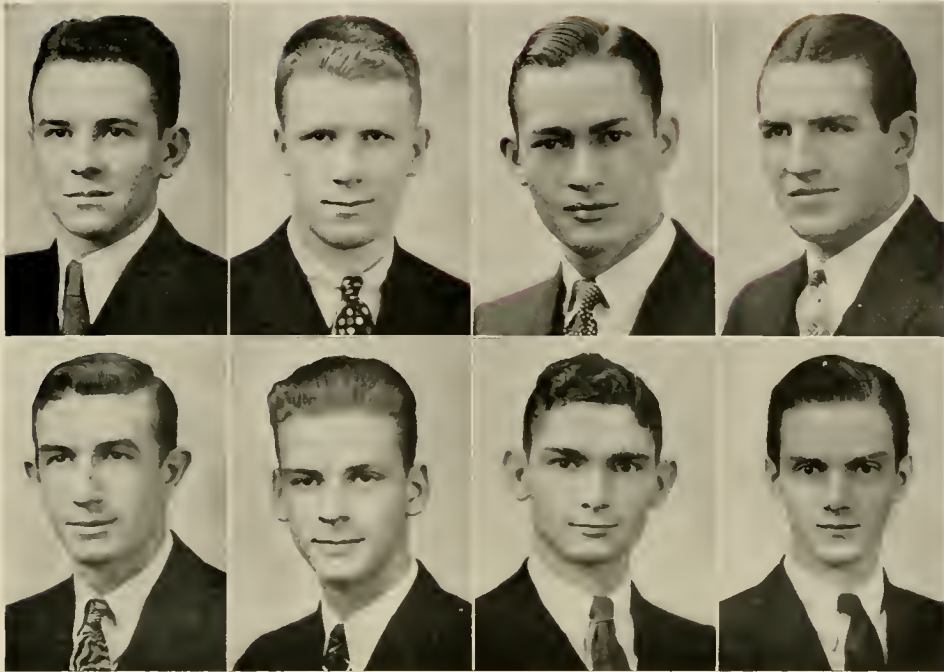
Harris Gray, Jr.
Greenwood, Miss.
Kappa Alpha

the Pac Soc nineteen thirty-seven

Sixty-four

een thirty-seven

• the Pac Sac *nineteen thirty-seven* •



HAMMEL
HOLLIS

L. J. Hammel, Jr.
Blue Diamond, Ky.
Pi Kappa Phi

HEETH
JACOBSEN

N. S. Heeth
Quitman, Ga.

HEMPHILL
JOHNSON

M. M. Hemphill
Griffin, Ga.
Kappa Alpha

HIPP
JOHNSTON

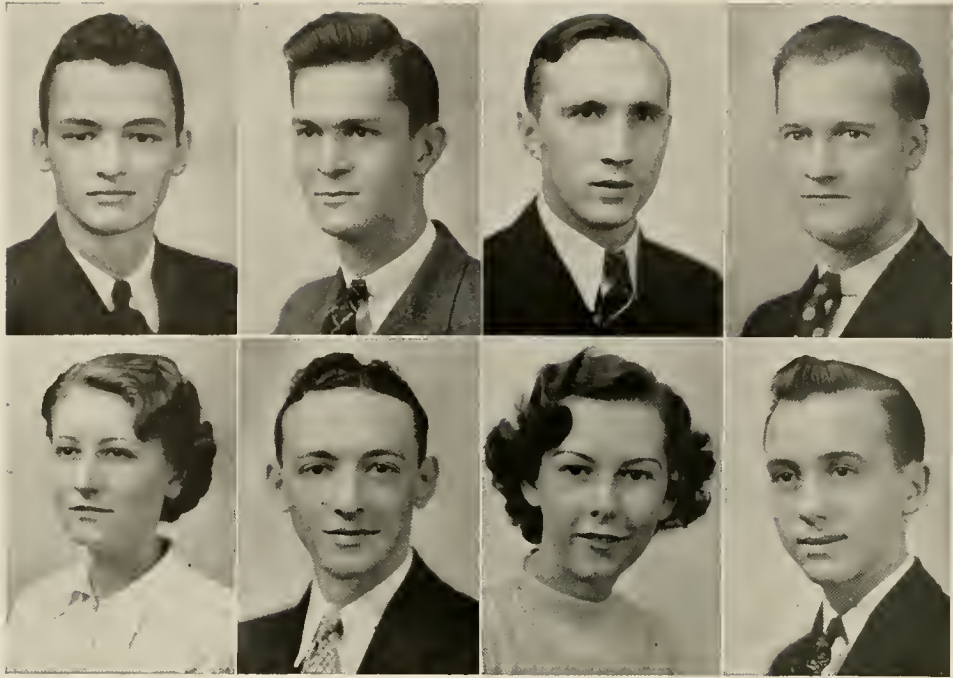
M. A. Hipp
Charlotte, N. C.
Alpha Lambda Tau

J. M. Hollis
Atlanta, Ga.

L. A. Jacobsen
Decatur, Ga.

E. A. Johnson
Columbus, Ga.
Pi Kappa Alpha

F. R. Johnston
Jefferson, Ga.



JONES, MAX
McCARY

Max Jones
Pontotoc, Miss.
Kappa Alpha

JONES, W. M.
McELROY

W. M. Jones
Bishopville, S. C.
Pi Kappa Phi

LANDEN
McGEE

G. F. Landen
Chinquapin, N. C.
Alpha Kappa Pi

LYLE
MacLEOD

J. L. Lyle
Decatur, Ga.

Evelyn McCary
Clinton, S. C.
Alpha Psi Delta

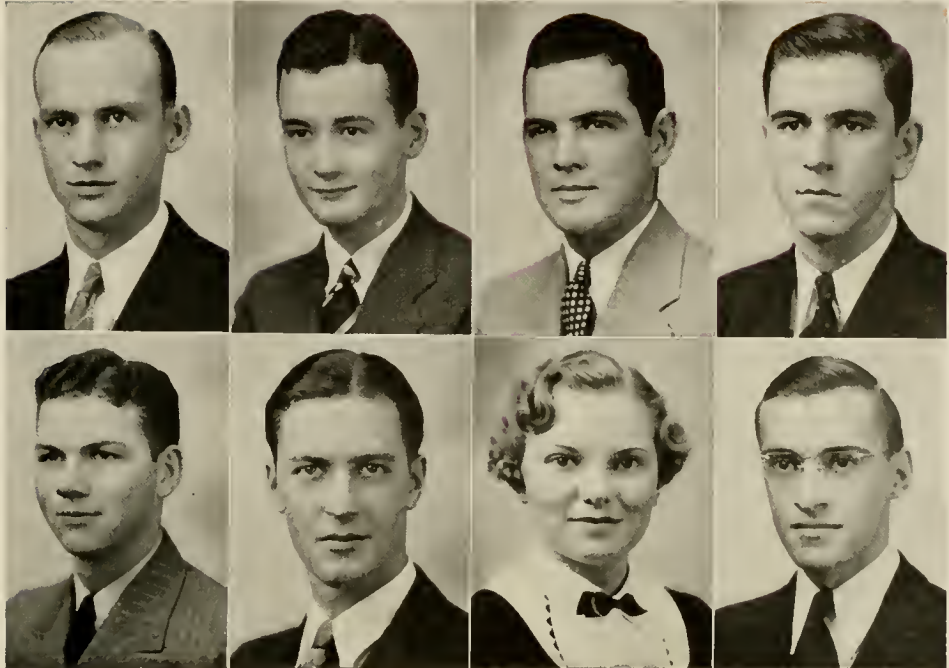
A. R. McElroy
Union, S. C.
Kappa Alpha

Elizabeth McGee
Laurens, S. C.
Alpha Psi Delta

E. F. MacLeod
Bennettsville, S. C.
Pi Kappa Phi

the Pac Sac nineteen thirty-seven •

• the Pac Sac nineteen thirty-seven •



McLEOD, C. H.
PATTERSON

McLEOD, L. W.
PEECKSEN

McRAE
PITTS

MOORE
POWER

C. H. McLeod
Ocala, Fla.

L. W. McLeod
Darlington, S. C.
Kappa Alpha

E. U. McRae
Midway, Ga.
Pi Kappa Alpha

W. A. Moore
Dalton, Ga.
Pi Kappa Alpha

M. C. Patterson
Moultrie, Ga.
Kappa Alpha

W. B. Peecksen
Charleston, S. C.
Pi Kappa Alpha

Joyce Pitts
Clinton, S. C.
Alpha Psi Delta

W. D. Power, Jr.
Woodstock, Ga.



ROBERTS
STOWELL

SALTERS
TODD

SHAW
WALDREP

SNIPES
WANNAMAKER

Pauline Roberts
Clinton, S. C.

Sarah Salters
Salters, S. C.
Alpha Psi Delta

B. G. Shaw
Sumter, S. C.
Pi Kappa Alpha

J. P. Snipes
Wade, N. C.

R. H. Stowell
Oakeland, Maine
Zeta Psi

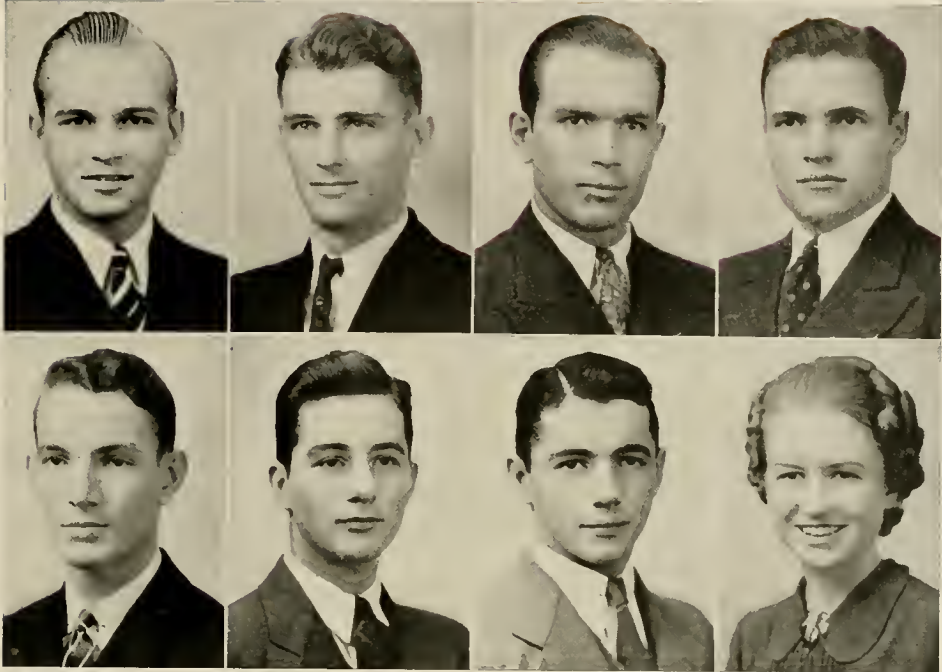
J. W. Todd
Laurens, S. C.
Kappa Alpha

R. L. Waldrep
Lanford Station, S. C.
Alpha Lambda Tau

C. J. Wannamaker, Jr.
Clinton, S. C.
Alpha Kappa Pi

the Pac Sac nineteen

the Pac Sac nineteen
thirty-seven



WARDLAW
WILSON

WASSON
WITHERSPOON

WICKER
WOODWARD

WILLIAMS
YOUNG

H. G. Wardlaw
Marietta, Ga.

J. H. Wasson, Jr.
Laurens. S. C.

C. M. Wicker
Gulf, N. C.

R. W. Williams
Chattanooga, Tenn.
Kappa Alpha

N. A. Wilson
St. Matthews, S. C.
Pi Kappa Phi

J. A. Witherspoon
Lancaster, S. C.
Kappa Alpha

John Woodward
Vienna, Ga.
Pi Kappa Alpha

Nancy Young
Clinton, S. C.
Alpha Psi Delta

SOPHOMORE CLASS OFFICERS



J. J. DENNARD
President



P. M. CLEMENT
Vice-President



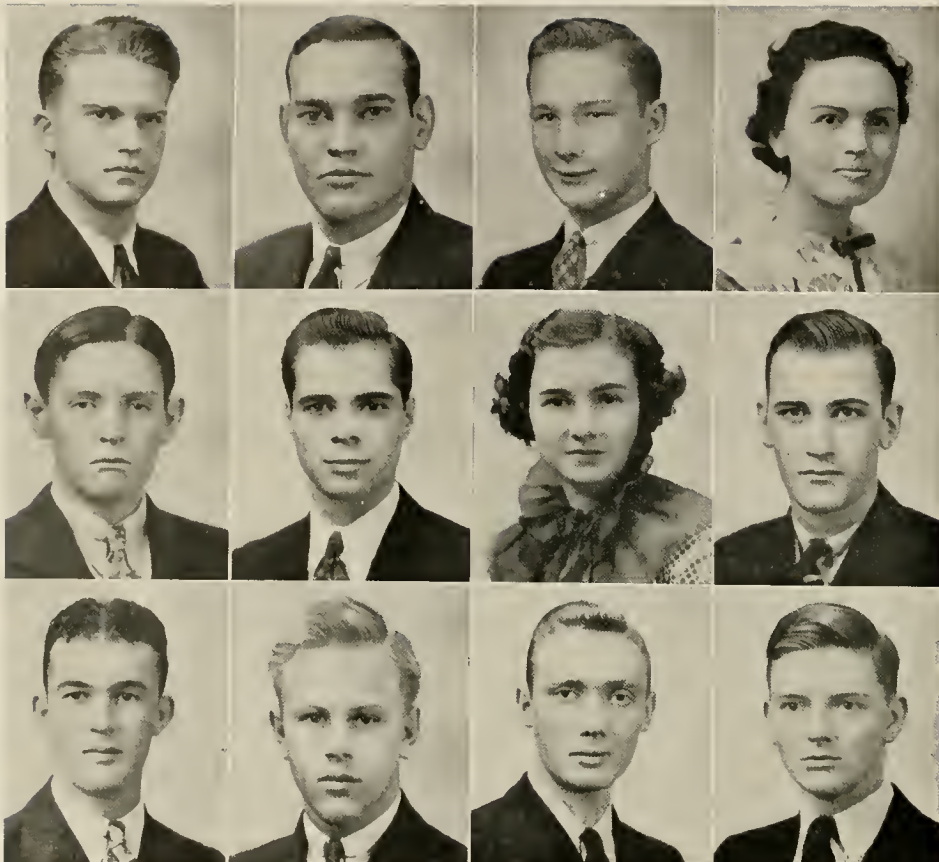
J. L. CULP
Secretary

Seventy

the Pac Sac nine
een thirty-seven •



Sophomores



ADAMS
BALDWIN
BACHELOR

ANTHOINE
BALLARD
BETHEA

ATKINS
BARNADO
BLACK

BALDWIN
BARNES
BONNER

L. H. Adams, Jr.
Charlotte, N. C.

J. W. Anthoine
Fort Valley, Ga.

C. H. Atkins
York, S. C.

Sara Frances Baldwin
Clinton, S. C.

W. C. Baldwin
Clinton, S. C.

J. P. Ballard
Tarboro, N. C.

Helen Barnado
Union, S. C.

T. K. Barnes
Clinton, S. C.

G. G. Batchelor
Eatonton, Ga.

T. M. Bethea, Jr.
Latta, S. C.

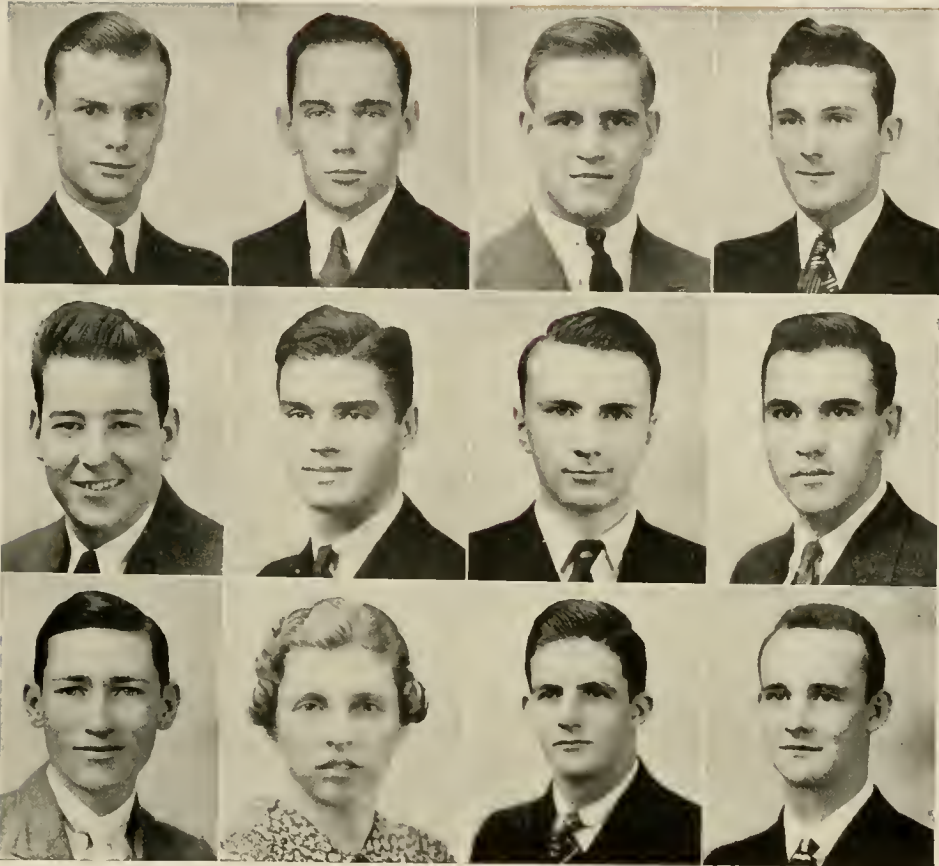
Robert Black
York, S. C.

J. C. Bonner
Pacolet, S. C.

• • the Pac See nine

Seventy-two
teen thirty-seven •

• the Pac Sac nineteen
 thirty-seven • •



BOOTH, F. W.
 BURGESS
 CHAPMAN

F. W. Booth
 Quitman, Ga.

R. A. Burgess
 Sumter, S. C.

J. A. Chapman
 Anderson, S. C.

BOOTH, J. R.
 BYRUM
 CLARKE

J. R. Booth
 Sumter, S. C.

J. F. Byrum
 Great Falls, S. C.

Sara Clarke
 Goldville, S. C.

BOSWELL
 CARMICHAEL
 CLEMENT

R. L. Boswell
 Greensboro, Ga.

A. Y. Carmichael
 Newnan, Ga.

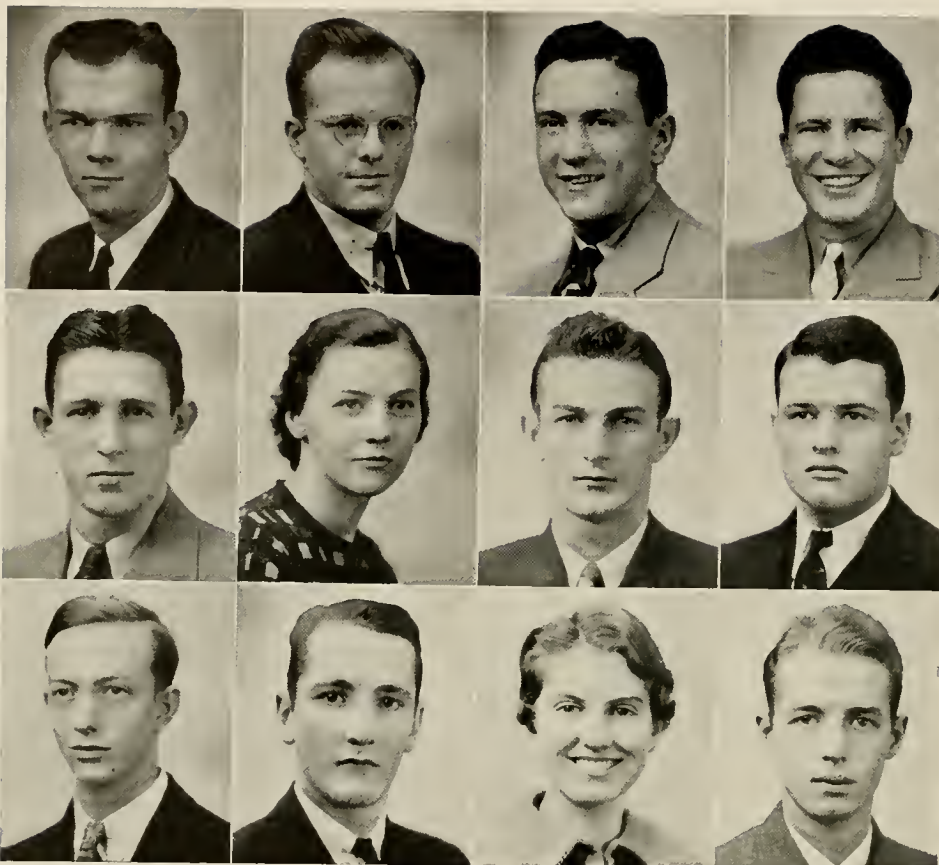
P. M. Clement
 Charleston, S. C.

BUFFKIN
 CARSON
 CLEMENTS

Cecil Buffkin
 Mullins, S. C.

D. M. Carson
 Newnan, Ga.

J. L. Clements
 Vidalia, Ga.



COLEMAN
DENNARD
FENN

COUSINS
DENSON
FISHER

CULP
DONNAN
FLEMING

DAVIS
EVANS
FOLLEY

T. T. Coleman, Jr.
Eastman, Ga.

W. L. Cousins
Atlanta, Ga.

J. L. Culp
Rock Hill, S. C.

D. W. Davis
Rock Hill, S. C.

J. J. Dennard
Tallahassee, Fla.

Suella Denson
Clinton, S. C.

J. D. Donnan
Clinton, S. C.

W. W. Evans
Bennettsville, S. C.

H. R. Fenn
Cordele, Ga.

D. H. Fisher
Soperton, Ga.

Laura Fleming
Laurens, S. C.

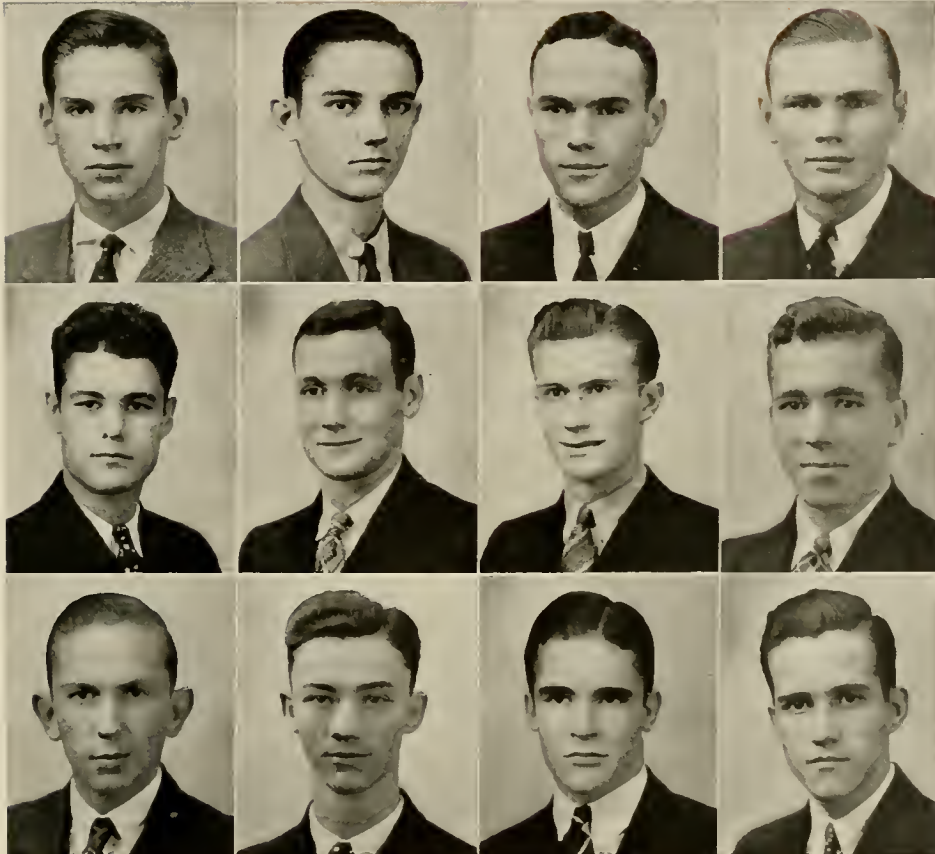
L. B. Folley
Sumter, S. C.

• • the Pac Sac nineteen thirty-seven •

Seventy-four

Seventy-four

• the Pac Sac nineteen
 teen thirty-seven •



GILMORE
 HIERS
 HORTON

William Gilmore
 Atlanta, Ga.

J. M. Hiers
 Lexington, S. C.

T. C. Horton
 Monroe, N. C.

HAFLEY
 HOLCOMBE
 HUGHES

J. B. Hafley
 Atlanta, Ga.

C. B. Holcombe
 Charleston, S. C.

R. D. Hughes
 Clinton, S. C.

HECKLE
 HOLDEN
 HUNTLEY

L. C. Heckle
 Fort Valley, Ga.

Lester Holden
 Nelson, Ga.

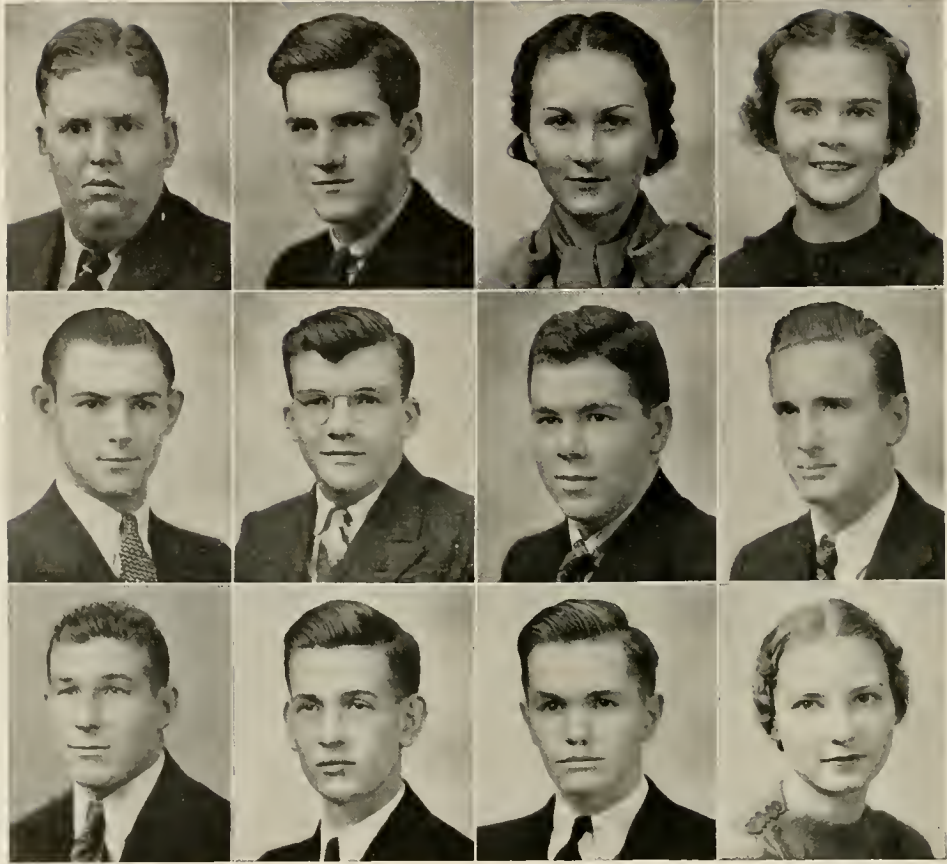
C. E. Huntley
 Aberdeen, N. C.

HENDERSON
 HORNE
 HUTCHINSON

L. S. Henderson
 Clinton, S. C.

E. J. Horne
 Winston-Salem, N. C.

R. F. Hutchinson
 Lawrenceville, Ga.



JACOBS, C. D.
JONES, T. Q.
LINDSAY

JACOBS, W. P., JR.
JONES, W. H.
McADAMS

JONES, AGATHA
KIMBO
McCULLY

JONES, LAETITIA
LAMBRIGHT
McLEOD

C. D. Jacobs, Jr.
Kingstree, S. C.

W. P. Jacobs, Jr.
Clinton, S. C.

Agatha Jones
Clinton, S. C.

Laetitia Jones
Clinton, S. C.

T. Q. Jones
Gainesville, Ga.

W. H. Jones
Seneca, S. C.

C. T. Kimbo
Piedmont, S. C.

E. G. Lambright
Brunswick, Ga.

A. G. Lindsay
Brunswick, Ga.

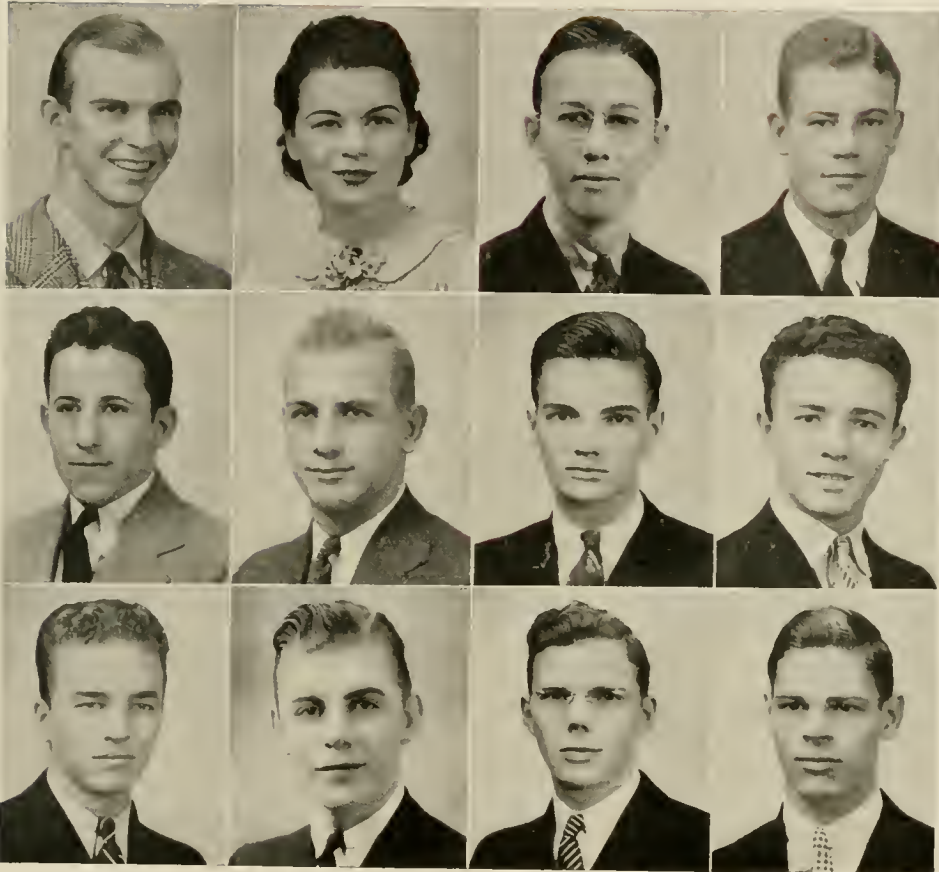
Chester McAdams
Iva, S. C.

C. W. McCully, Jr.
Sharon, S. C.

Verna McLeod
Ocala, Fla.

• • the Pac See nineteen thirty-seven •

• the Pac Sac nineteen thirty-seven •



McSWEEN
MOORE, M.
PEARSON

W. C. McSween
Chester, S. C.

Marion Moore
Rock Hill, S. C.

J. A. Pearson
Spartanburg, S. C.

MAHAFFEY
MOORE, P.
PERRY

Helen Mahaffey
Laurens, S. C.

P. N. Moore
York, S. C.

J. D. Perry
Cross Hill, S. C.

MILLER
MORRISON
POPE

F. M. Miller
Attapulgus, Ga.

D. M. Morrison
McClellanville, S. C.

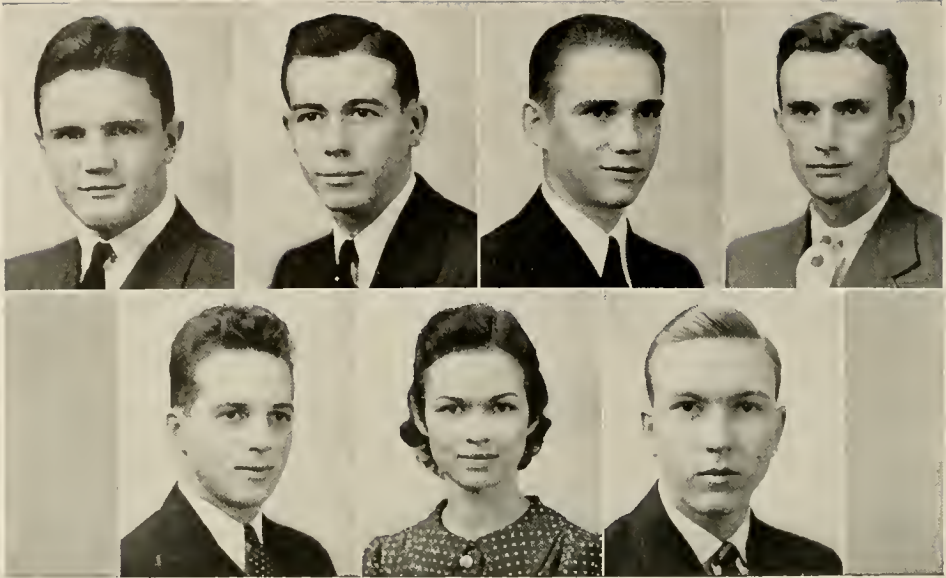
W. E. Pope
Attapulgus, Ga.

MIXSON
NETTLES
POTTER

M. C. Mixson
Charleston, S. C.

J. R. Nettles
Lake City, S. C.

Wayne Potter
Atlanta, Ga.



REYNOLDS

RITCH

ROGERS

St. JOHN

SHAMHART

SIMPSON

SMITH

D. H. Reynolds
Washington, Ga.

M. R. Ritch
Charlotte, N. C.

R. T. Rogers
Blenheim, S. C.

Virgil St. John
Charlotte Court
House, Va.

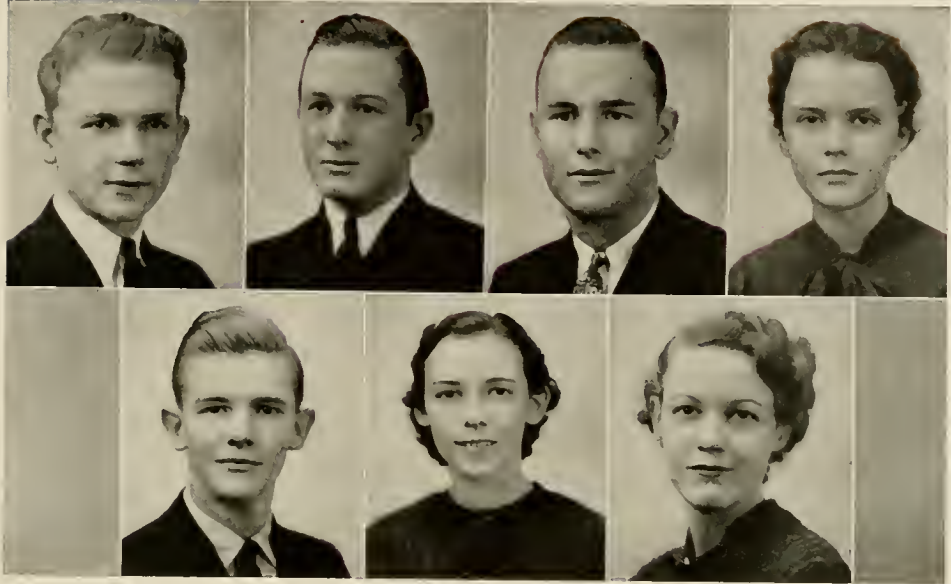
W. H. Shamhart, Jr.
Rockwood, Tenn.

Shannon Simpson
Clinton, S. C.

W. A. Smith
Savannah, Ga.

the Dec Sae nineteen

• the Pac Sac nineteen
thirty-seven •



SULLIVAN

TAYLOR

TODD

WHAM

WYLIE

BROCK

TAYLOR

L. D. Sullivan
Laurens, S. C.

L. H. Taylor
Laurens, S. C.

W. B. Todd
Clinton, S. C.

Wilma Wham
Laurens, S. C.

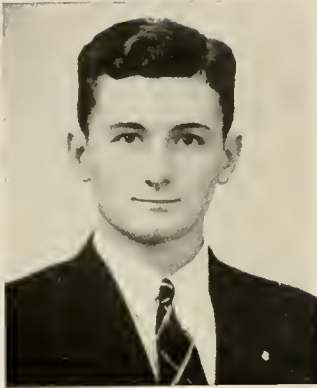
J. M. Wylie
Clover, S. C.

SPECIAL STUDENTS

Mary Brock
Goldville, S. C.

Margaret Taylor
Clinton, S. C.

FRESHMAN CLASS OFFICERS



HUIT PAUL
President



HUGH RUTLEDGE
Vice-President



BE MOORE
Secretary

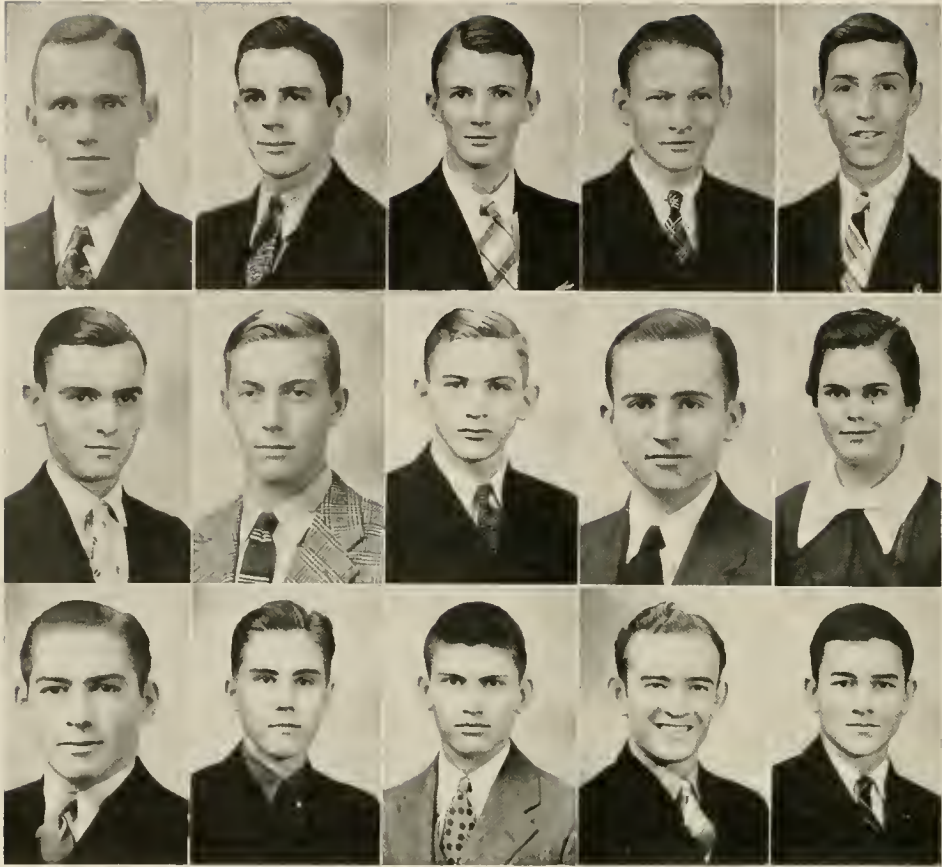
• • the Pac Sac nineteen

thirty-seven •

Eighty



Freshmen



ABERCROMBIE
AULD
BLUE

ALEXANDER
AYCOCK
BOYKIN

ALLEN
BARNES
BROOKER

ANDERSON
BARNHILL
BRYANT

ARNOLD
BLANTON
BUCHAN

J. A. Abercrombie
Gray Court, S. C.

J. P. Alexander
Menlo, Ga.

F. G. Allen
Darlington, S. C.

S. F. Anderson
Clinton, S. C.

W. D. Arnold
Hamer, S. C.

J. H. Auld
Columbia, S. C.

B. B. Aycock
Rock Hill, S. C.

C. E. Barnes
Clinton, S. C.

J. W. Barnhill
Charleston, S. C.

Catherine Blanton
Spartanburg, S. C.

D. A. Blue
Parkton, N. C.

L. M. Boykin
Darlington, S. C.

W. E. Brooker
Denmark, S. C.

E. D. Bryant
Society Hill, S. C.

J. R. Buchan
Mullins, S. C.

• • the Pac Sac nineteen thirty-seven •

the Pac Sac nineteen thirty-seven



BUCHAN
COGBURN
DALZIEL

BUIE
COMBS
DAVIS

BULLOCK
CREWS
DAVIS

CARAWAY
CRUM
DINGEMAN

CARROLL
CUNNINGHAM
DIXON

R. G. Buchan
Aberdeen, N. C.

D. M. Buie
Dillon, S. C.

William Bullock
Lake View, S. C.

W. G. Caraway
Bishopville, S. C.

J. Carroll
Summerville, S. C.

F. L. Cogburn
Roanoke, Va.

I. E. Combs
Griffin, Ga.

M. S. Crews
Laurens, S. C.

H. M. Crum
Greenwood, S. C.

J. P. Cunningham
Atlanta, Ga.

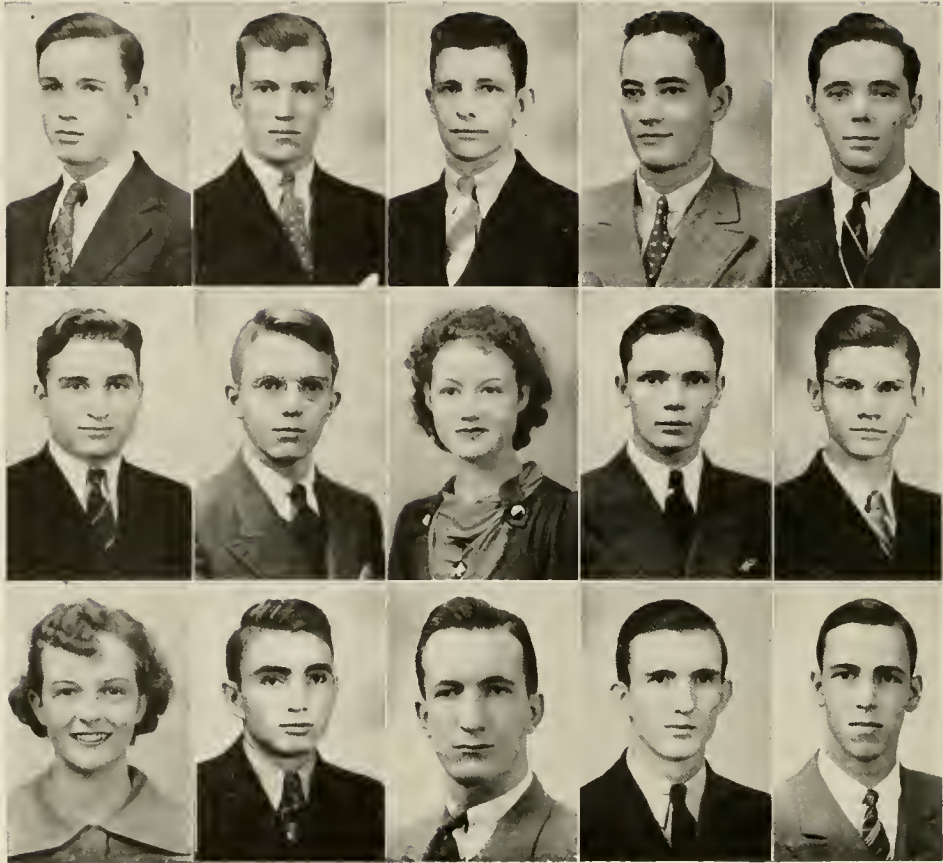
J. M. Dalziel
Lake City, S. C.

Beverly Davis
Clinton, S. C.

G. P. Davis
Bishopville, S. C.

D. R. Dingeman
Fort Monroe, Va.

T. E. Dixon
Mullins, S. C.



DUBOSE
FINNEY
GILMER

ELLISON, R. J.
FLEMING
GODFREY

ELLISON, S. D.
GAMBLE
GRIFFIN, J. C.

ELLISON, T. H.
GILLIAM
GRIFFIN, M. R.

ERWIN
GILLILAND
HALL

S. R. Dubose
Oswego, S. C.

R. J. Ellison
Clinton, S. C.

S. D. Ellison
Winnsboro, S. C.

T. H. Ellison
Clinton, S. C.

A. M. Erwin
Sharon, S. C.

H. F. Finney
Goldville, S. C.

H. C. Fleming, Jr.
Laurens, S. C.

Ida Gamble
Clinton, S. C.

H. D. Gilliam
Clinton, S. C.

J. Gilliland
Goodwater, Ala.

Elizabeth Gilmer
Anderson, S. C.

J. E. Godfrey
Gaffney, S. C.

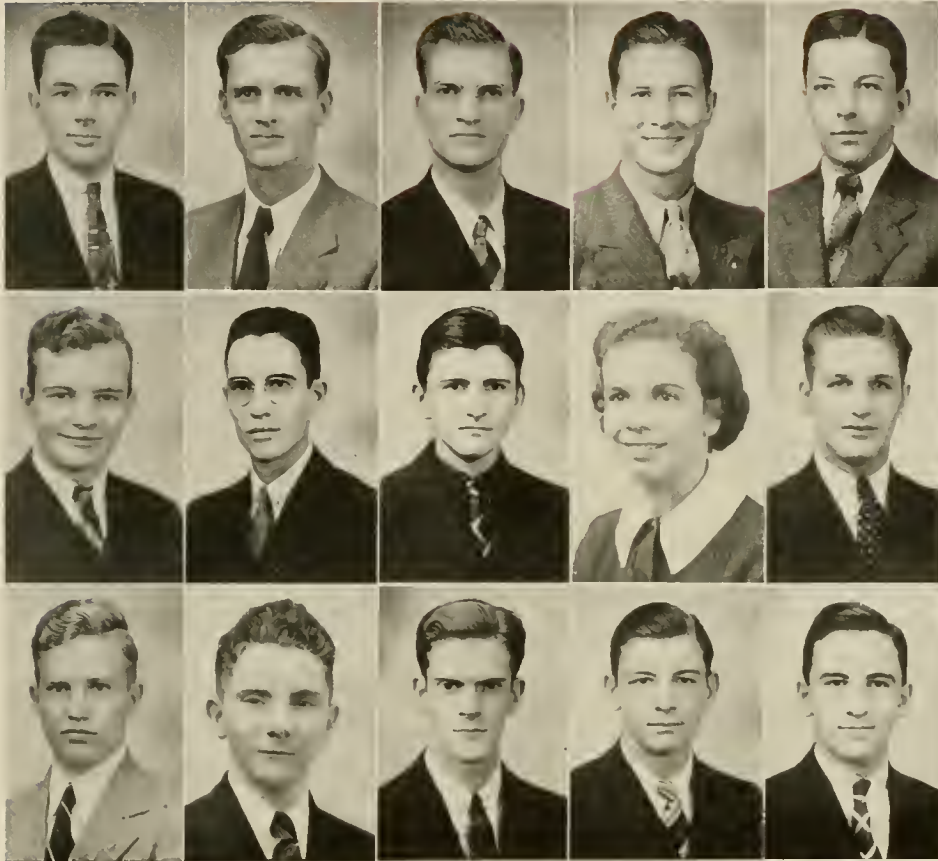
J. C. Griffin
Greenwood, S. C.

M. R. Griffin
Greenwood, S. C.

L. E. Hall
Clinton, S. C.

the Pac Sac nineteen thirty-seven

the Pac Sac nineteen
 teen thirty-seven



HANSELL
 HUDSON
 KEE

HARRINGTON
 HUGGINS
 KNOX

HART
 HUNTLEY
 LIPSEY

HENDRICKSON
 JOHNSON
 McCORMICK

HENLEY
 JONES
 McCGREGOR

W. A. Hansell, Jr.
 Atlanta, Ga.

R. C. Harrington
 Manning, S. C.

W. D. Hart
 Atlanta, Ga.

R. G. Hendrickson
 Milledgeville, Ga.

D. P. Henley
 Summerville, Ga.

D. W. Hudson
 Greenville, S. C.

H. G. Huggins
 Myrtle Beach, S. C.

D. M. Huntley
 Ruby, S. C.

Mary Lou Johnson
 Clinton, S. C.

J. W. Jones
 Dublin, Ga.

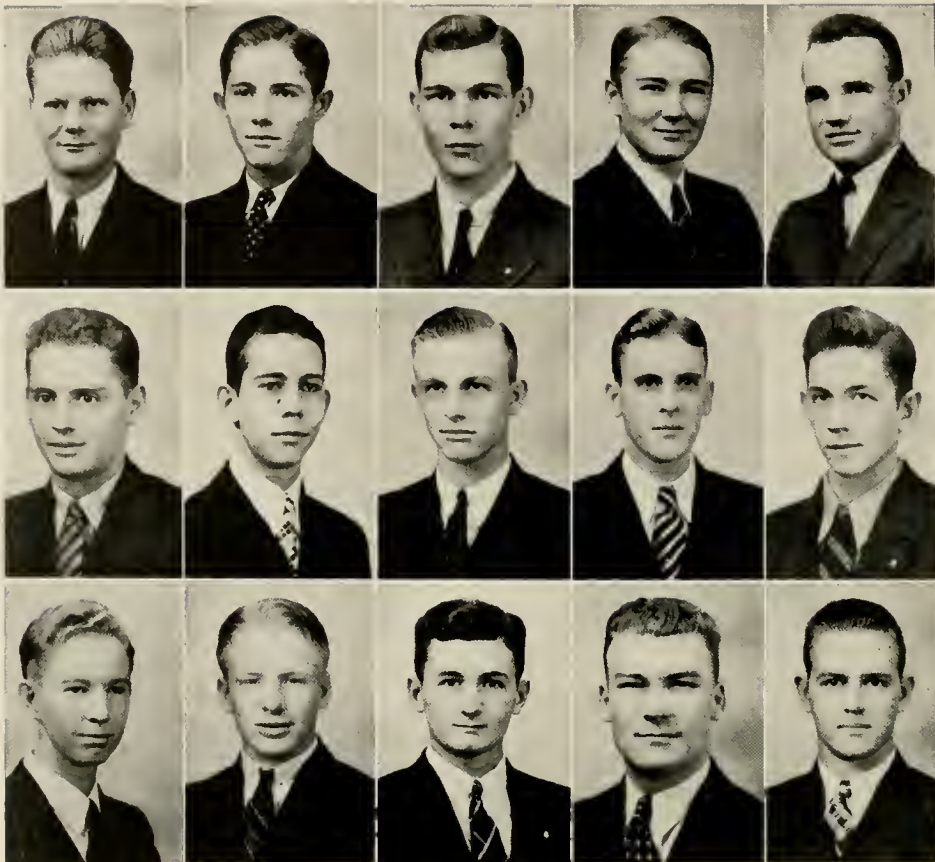
W. S. Kee
 Rock Hill, S. C.

R. C. Knox
 Laurens, S. C.

S. T. Lipsey
 Savannah, Ga.

D. M. McCormick, Jr.
 Clio, S. C.

J. S. McGregor, Jr.
 Ruby, S. C.



McKELLER
MAHER
NORTON

McLAURIN
MILLER
PASCHAL

McREE
MOORE, B. N.
PAUL

McSWAIN
MOORE, B. W.
PERRY

MABRY
NEXSEN
PIERCE

L. B. McKellar
Greenwood, S. C.

W. C. McLaurin
Bennettsville, S. C.

J. B. McRee
Columbia, Tenn.

C. C. McSwain
Clinton, S. C.

G. L. Mabry
Sumter, S. C.

J. P. Maher
Erie, Penn.

W. B. Miller, Jr.
Attapulgus, Ga.

Be N. Moore
York, S. C.

B. W. Moore
Dillon, S. C.

J. A. Nexsen
Kingstree, S. C.

M. M. Norton
Marion, S. C.

H. W. Paschal
Washington, Ga.

H. Paul
Charleston, S. C.

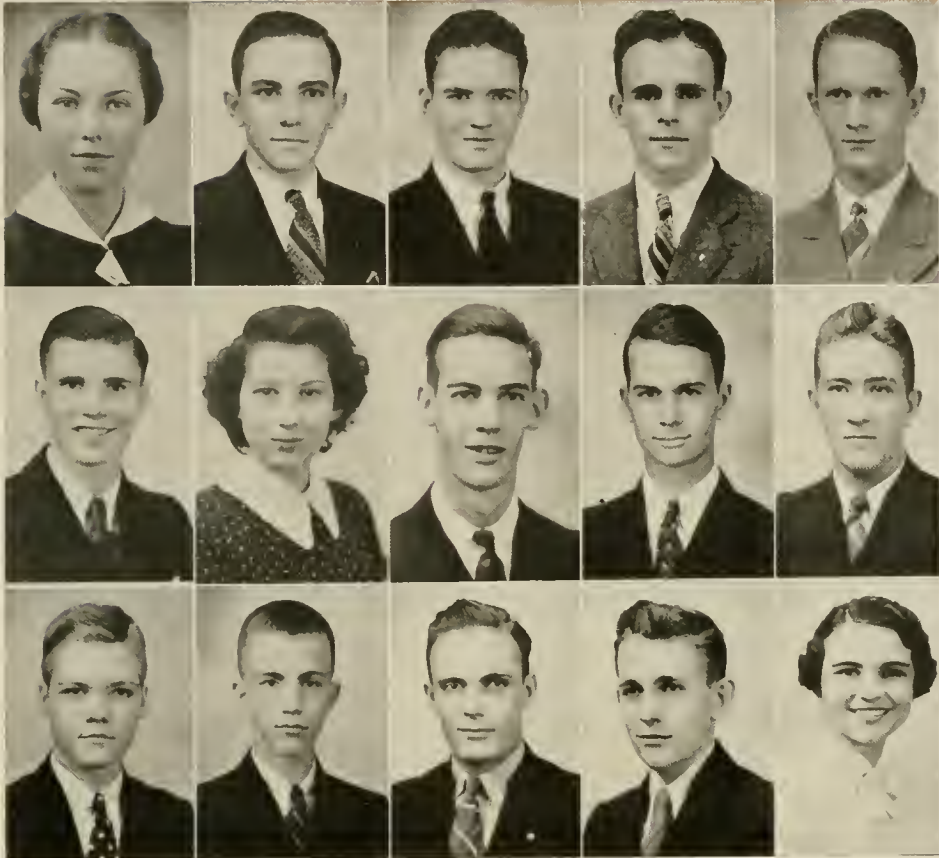
I. M. Perry
Kershaw, S. C.

W. B. Pierce
Charlotte, N. C.

• • the Pac Sac nineteen thirty-seven •

Eighty-six

the Pac Sac nineteen
thirty-seven



PITTS, M.
ROACH
SKINNER

PITTS, W.
ROBERTS
SPRATT

RAWLS
ROFF
STRAIN

REEVES
RUTLEDGE
STUBBS

RICHARDSON
SHULER
STURGEON

Martharene Pitts
Clinton, S. C.

W. R. Pitts, Jr.
Clinton, S. C.

J. L. Rawls
Clinton, S. C.

J. M. Reeves
Atlanta, Ga.

J. S. Richardson
Sumter, S. C.

R. B. Roach
Lowell, N. C.

Adelaide Roberts
Clinton, S. C.

L. G. Roff
Laurens, S. C.

H. M. Rutledge
Charleston, S. C.

M. D. Shuler, Jr.
St. Matthews, S. C.

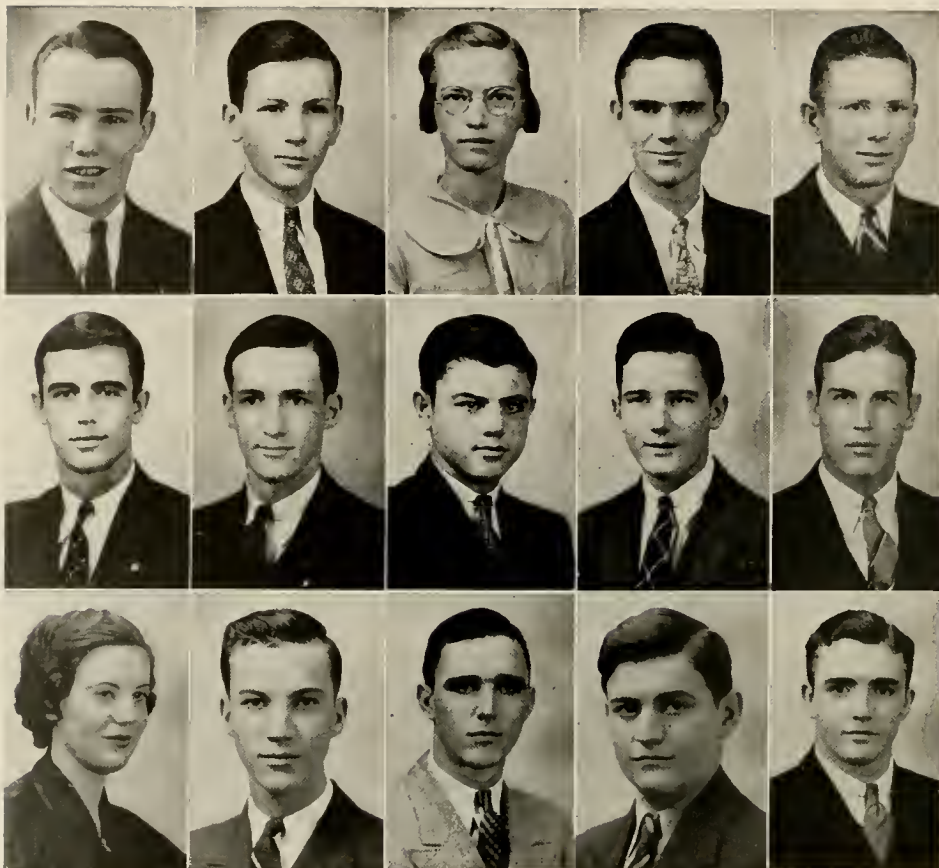
H. P. Skinner
Charleston, S. C.

J. L. Spratt
York, S. C.

E. H. Strain
Gaffney, S. C.

J. T. Stubbs
Summerville, Ga.

Jane Sturgeon
Clinton, S. C.



SWIFT
THOMPSON
UNDERWOOD

TAYLOR, G. A.
TIMMONS
WEBB

TAYLOR, T.
TRAMMELL
WILKERSON

TERRELL
TRENT
WOOD

THOMASON
TURNER
WORRELL

W. F. Swift, Jr.
Waynesville, N. C.

G. A. Taylor
Clinton, S. C.

Thelma Taylor
Clinton, S. C.

J. M. Terrell
Clinton, S. C.

J. R. Thomason
Fountain Inn, S. C.

C. B. Thompson
Augusta, Ga.

R. K. Timmons, Jr.
Columbia, S. C.

C. T. Trammell
Clinton, S. C.

H. E. Trent
Portsmouth, Va.

C. H. Turner
Tallahassee, Fla.

Irma Underwood
Clinton, S. C.

F. L. Webb
Whitmire, S. C.

W. H. Wilkerson
Scottsburg, Va.

E. L. Wood, Jr.
Clinton, S. C.

R. H. Worrell, Jr.
Batesburg, S. C.

the Dec Sac nineteen thirty-seven

Eighty-eight

the Dec Sac nineteen thirty-seven



Athletics

COACHING STAFF



WALTER A. JOHNSON
Director of Athletics



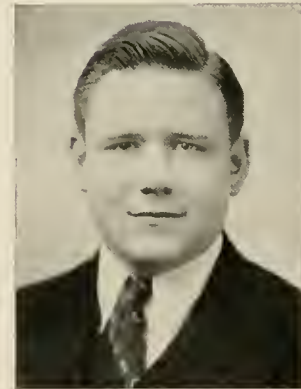
LONNIE S. McMILLIAN
Asst. Director of Athletics



FRANK B. WALDREP
Freshman Coach



ROY W. FOREHAND
Freshman Coach



ALFRED J. PLOWDEN
Freshman Coach

• • the Pac Sac Ninety
teen thirty-seven •

Ninety

teen thirty-seven •

● the Pac Sac nineteen thirty-seven ● ●



Dillard

McLeod

McAlpine

Keller

McSween

BLOCK P CLUB

ERNEST EVANS *President*
LAWRENCE WELDON *Vice-President*
RALPH WALDREP *Secretary-Treasurer*

Members from Football

J. B. Jacobs (C)
Glenn Beeman
Ernest Evans
Bill Thompson
Raleigh Shoemaker
Johnny Hutchinson
Vic Correll
Marion Bird
Vic Collings
Bill Degner
Claude Cappelmann
Coon Weldon
Montague Jacob
Furman Wallace
John Bill Steenberg
Ralph Waldrep
Macon Hipp
Steele Caldwell
Bill Cox
June Moore
Jimmy Dennard
D. W. Davis
Large Evans
Robert Boswell
Pete Holcombe
Giles Batchelor
Deke Reynolds
Lykes Henderson
Buck Marks (M)

Members from Basketball

Ralph Waldrep (C)
George Cleckler
Frank Johnston
Les Holden
Pete Holcombe
Giles Batchelor
Baron Cavin
Billy Moore (M)

Members from Swimming

Will Wallace
Tarze Langston
Al McSween
Malcolm Norton (M)

Members from Track

J. B. Jacobs (C)
Bill Thompson
Walt William
Macon Hipp
Malcolm Hunt (M)
Yankee Beeman
Norwood Cole
Jimmy Dennard
Biflet Green
Deke Reynolds
Bill McSween
Bud Huntley
Joe Hollis
D. W. Davis
Joe Commander
Garner Shaw (M)

Members from Baseball

Johnny Suggs (C)
Marion Bird
Coon Weldon
Joe Commander
Cab Blackwell
Shorty Horne
Hick Harvin
Giles Batchelor
Hawk Evans
Wallace Coe
Footsie Yow (M)
Joe Patrick (M)

Members from Boxing

Claude Cappelmann (C)
Ed Lambright
John Wales Todd
Billy Burns
Jim Booth
Charley Kimbo
Curly Clements
Ernest Propst (M)

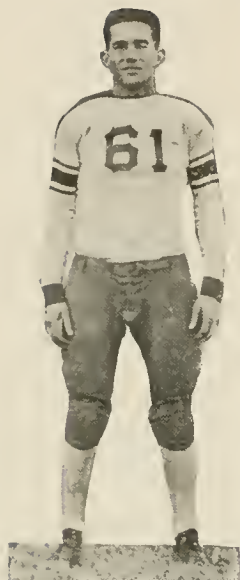
Members from Tennis

Marion Parham (C)
George Beatty (C)
John Woodward
Harris Gray
Hammond Adams
Bill Jacobs
Ralph Stowell



Football

1937 FOOTBALL SCHEDULE



J. B. JACOBS
Captain

- Sept. 18—Clemson at Clemson.
 Sept. 25—Georgia Tech at Atlanta.
 Oct. 2—Erskine at Due West.
 Oct. 8—Citadel at Clinton.
 Oct. 15—Newberry at Clinton.
 Oct. 23—Furman at Greenville.
 Oct. 30—Emory and Henry at Emory.
 Nov. 5—Mercer at Clinton.
 Nov. 13—Open.
 Nov. 20—Carolina at Columbia.
 Nov. 26—Wofford at Spartanburg.



WALTER JOHNSON
Head Coach



VARSITY SQUAD

the Pac Sac nineteen thirty-seven

Ninety-four

thirty-seven



Thompson

Walter Johnson's gentlemen of the gridiron topped South Carolina's "Little Four" and exhibited strength against all comers in a creditable 1936 seasonal performance. Opening against Clemson, the P. C. lads took on some stiff competition before turning in the moleskins with a decisive triumph over Wofford. Six of the nine games were losses, but six of the nine teams played were definitely out of the Hose class.

After dropping the traditional Clemson opener, Johnson's gentlemen journeyed to Atlanta to be routed by Tech's fierce eleven. A two weeks' pause put them in the mood to whip Erskine on home soil, but on the following week-end, Citadel handed the eleven a defeat in Charleston. Despite a carload of injuries brought on in the Citadel clash, Newberry was whipped by a four touchdown margin.



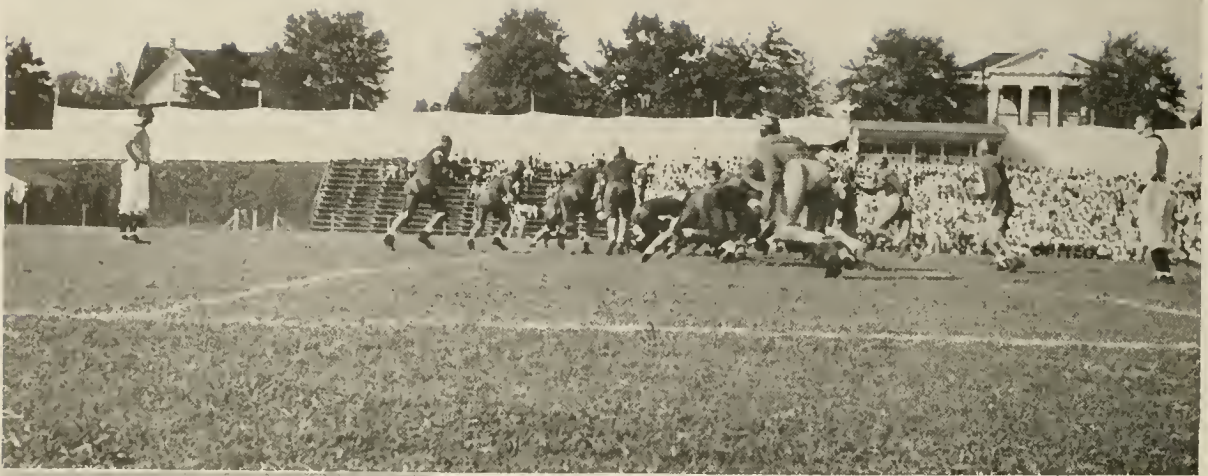
Evans



J.B. Jacobs



Beeman



Going up against Wake Forest, Furman and Mercer, the Blue Stockings were thrice set back on their heels. Their play was determined and consistent, however, and especially against the mighty Hurricane did the Calvinists rise to heights of glory.

CLEMSON 19—P. C. 0

A powerful collection of sturdy Tigers was hard pressed to gain a three touchdown victory in the annual Palmetto State opener on Riggs Field. After a momentary first period display of offensive, P. C.'s eleven assumed a defensive stand in an effort to retard Clemson's slippery ball carriers. A sparkling trio of Clemson backs, Folger, Lawton, and Magee, took advantage of a driving forward wall to pile up a high yardage total. Weldon was the only Presbyterian back able to make any headway against the stolid Tiger defense, but his mates played hard and well.



Shoemaker



Bird



Hutchinson



Correll



GEORGIA TECH 55—P. C. 0

After holding their widely heralded opponents to a pair of touchdowns in the first half, the Blue Stockings wilted under a crushing parade of beef and speed as dished out by a bruising Tech line and such backfield aces as Edwards and Kommaman. The humble Hosemen from Clinton were no match for the Engineers.

ERSKINE 0—P. C. 14

A concentrated second half offensive yielded two touchdowns and Presbyterian's initial win as Erskine's Flying Fleet was grounded on Johnson Field, 14 to 0. The elusive hips of Weldon and Dennard, supplemented by the well known Jacobs' toe, which toe, incidentally, Coach Alexander declared was the most effective on Grant Field this season, were instrumental in sinking the Fleet.



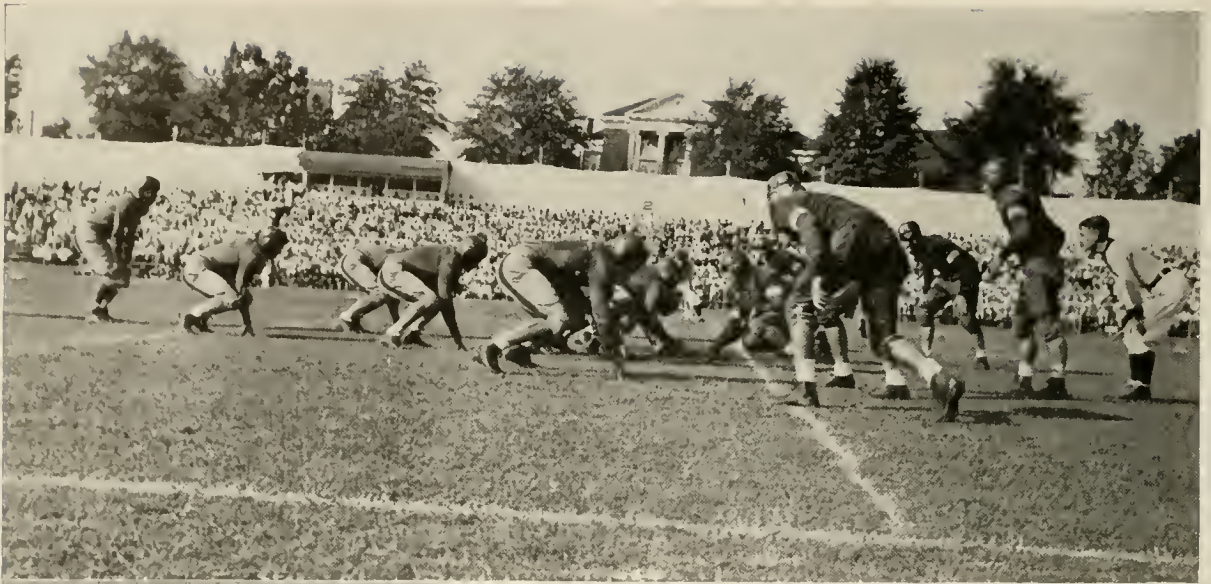
Cappelmann



Weldon

Collings

Degner



CITADEL 25—P. C. 0

Citadel's Bulldogs cashed in on a rough and ready style of play to almost paralyze their Presbyterian opponents and then pile up second half touchdowns and an undeserved 25 to 0 victory. The Smith Brothers stood out among Cadet performers, while Jimmy Denuard led in ground-gaining and performance for P. C.

NEWBERRY 0—P. C. 27

The crippled Blue Stockings limped through Newberry to chalk up four touchdowns in their fifth performance of the season. It was P. C.'s second "Little Four" conquest, and threw cold water on a colorful Indian Homecoming. Bill Thompson slipped through for a pair of tallies and Moore and Jacobs also reached the scoring haven. The Hosemen were playing without the services of four first stringers and several first line reserves.



Todd



M.H. Jacobs



Hipp



Waldrep



WAKE FOREST 19—P. C. 0

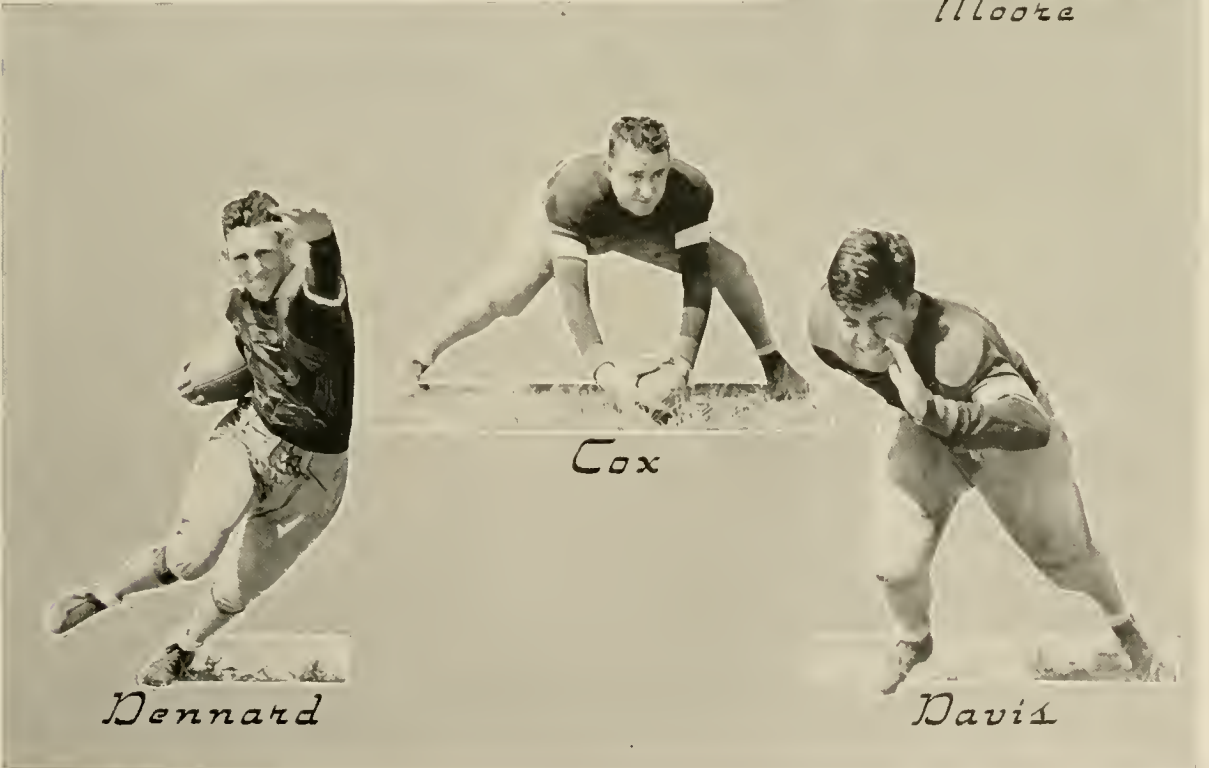
Three thousand spectators shivered from the icy blasts of winter as they watched Hobo Daniel and Dallas Morris in touchdown sprints that gave their Wake Forest brethren a hard-fought victory over P. C. The Blue Stocking offensive was held at bay throughout, and a strong defensive act was undone by the Daniel-Morris combination. Hipp, Holcomb, and Davis turned in an excellent performance for the Hose.

FURMAN 11—P. C. 0

A magnificent exhibition of spirited football was shown under the floodlights of Johnson Field one evening, and Furman's House of Magic was hauled back to Greenville in crates—lucky to have beaten an underdog neighbor from Clinton. All-Southern end Bob King, All-State halfback June Scott, and the others of an all-star line-up were extended to their fullest in subduing the determined Hosemen. Hipp, Beeman, and Reynolds scintillated in their respective positions, but every man wearing the Garnet and Blue was magnificent.



Moose



Dennard

Cox

Davis



MERCER 30—P. C. 6

Mercer's Bears went to town in the second half, flashed a dazzling and baffling style of play, and sent the Blue Hose home with an untasty 30 to 6 defeat. P. C. led at the half as the result of an opening punch that temporarily floored their opponents, but, paced by Al Owen, the Bruins came back strong to offset the Hose advantage and run things the Mercer way.

WOFFORD 7—P. C. 20

The local lads took a squint at the stadium filled with old grads and made Homecoming a joyous occasion by putting the skids under Wofford in the season finals.



Boswell



Evans



Holcombe



Opening up early, Weldon, Jacobs, and Moore clipped off first downs and Weldon went over for a score. A freak Terrier play evened up the count, but after a scoreless second quarter, the Blue Stockings asserted themselves and kept the Terriers lashed down. Of the starting P. C. line-up, eight men were in their last performance. The senior personnel included Weldon, Thompson, Shoemaker, Jacobs, Beeman, Evans, Correll, and Hutchinson.

Captain J. B. Jacobs was named All-State Fullback, and Guard Glenn Beeman landed a place on the second team.



Reynolds



Batchelor



Henderson

1937 FROSH SCHEDULE



BILL PEECKSEN
Manager

Sept. 29—Carolina at Columbia.
Oct. 7—Wofford at Clinton.
Oct. 17—Newberry at Newberry.
Nov. 4—Darlington at Clinton.
Nov. 12—Clemson at Clinton.



L. S. McMILLIAN
Coach



FRESHMAN SQUAD

• • the Pac Sac nine
teen thirty-seven •

One Hundred Two

teen thirty-seven •



Basketball



Coach Lonnie McMillian's 1937 sophomore cage outfit won eight contests and lost seven against state competition to finish fifth in the standings, after a campaign productive of thrills, disappointments, good, and occasionally bad, basketball.

With three sophomores and two juniors making the regular lineup, the Hosemen opened against South Carolina in Columbia, meeting defeat, but in their seasonal debut before a home town crowd, they neatly put away the College of Charleston by a 47 to 24 count. After taking Erskine, Wofford, Newberry, and Clemson in order, indications were pointing toward a state championship until a slump befell the team, falling before Citadel, Carolina, and Wofford.

The Blue Hose defeated Furman and Newberry, but dropped the last two games to College of Charleston and Citadel.



Waldrep



Folley



Cavin



Johnston



Cox



Sophomore Ciles Batchelor gave probably the best performance of the season, while Captain Ralph Waldrep, Les Holden, and Pete Holcomb each proved their court ability. Frank Johnston, a junior, was a valuable man, and shot a good many points from his guard position.

Highlight of the season was reached by the basketballers when they were invited to participate in the S. I. A. A. Basketball Tournament in Bowling Green, Ky., an honor accorded no other school in this section. Eight men invaded the Blue Grass State, only to be turned back in their opening encounter, with Morehead State Teachers' College, a fast quintet definitely out of the Blue Hose class.

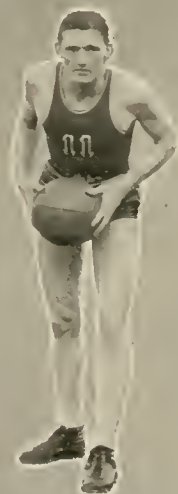
The entire team personnel is available for Coach McMillian's '33 five, which gives promise of rising to a championship.



Batchelor



Holcombe



Cleckler



Woodward



Holden



BILL MOORE
Manager

1937 RESULTS

Carolina	31	32	P. C.	21	21
College of Charleston	24	35	P. C.	47	32
Erskine	27	35	P. C.	32	18
Wofford	36	28	P. C.	37	24
Newberry	30	21	P. C.	40	29
Clemson	27		P. C.	30	
Citadel	27	31	P. C.	16	30
Furman	28	22	P. C.	33	29



LONNIE McMILLIAN
Head Coach



VARSITY SQUAD

• • the Pac Sac

nineteen

teen thirty-seven •

One Hundred Six

the Pac Sac nineteen thirty-seven



ROY FOREHAND
Coach

1937 RESULTS

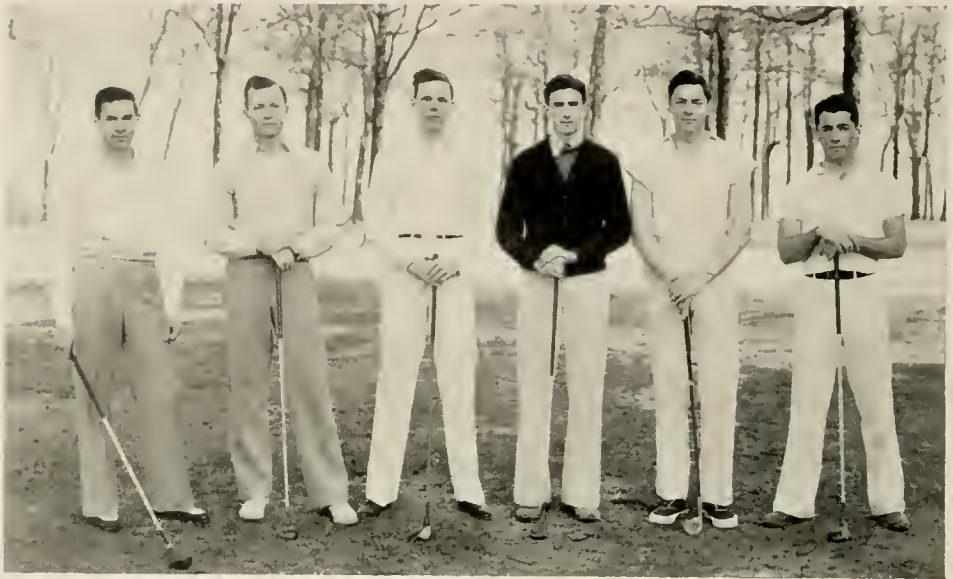
Erskine	26	36	P. C.	17	22
Wofford	29	14	P. C.	12	18
Newberry	46	23	P. C.	26	32
Citadel	33		P. C.	28	



JAMES HAFLEY
Manager



FRESHMAN SQUAD



GOLF TEAM

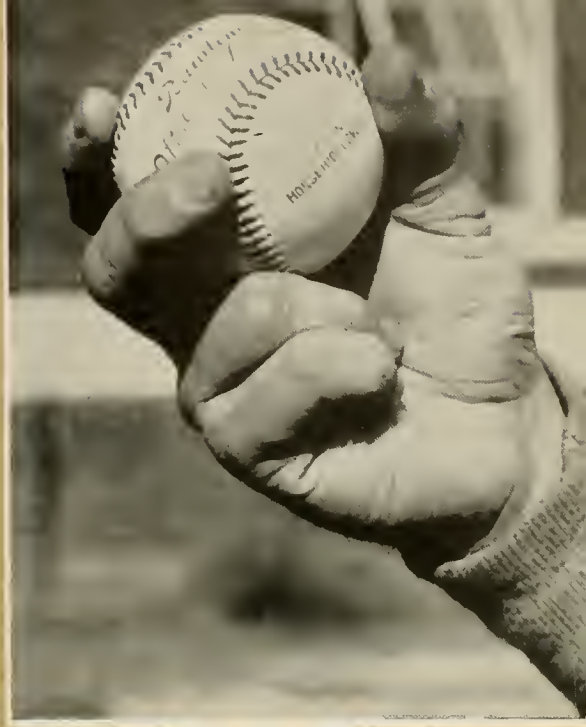
P. C. has added golf to the list of minor sports in presenting this year her first team. What success this team will have is a question that time alone will decide, as none of the men have taken part in intercollegiate golf before. All of them, however, have had a great deal of experience in the game, and, under the able coaching of Major Wysor, this new enterprise should not prove to be disappointing.

The team is captained by Johnny Woodward, and he, with Ralph Stowell, Wendell Pope, Billy Gilmore, Steele Caldwell, and George Beatty will bear P. C.'s standards in this new field.

the Pac Sac nineteen

One Hundred Eight

thirty-seven



Baseball

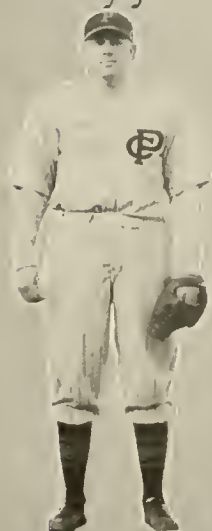


After a rather disappointing early season activity, Coach Chick Galloway's 1936 team climbed into third place in the Palmetto League, and showed promise of developing into one of the strongest contenders for the 1937 baseball crown.

Six lettermen were lost to the Blue Hose by graduation, but several sophomores have been added to the roster, so that P. C.'s hopes for a successful season are rather high. Coach Galloway, doubtless the ablest baseball mentor in the State, can be relied upon to produce a winning team. The 1937 outfit will have as Captain Johnny Suggs, the peer of the intercollegiate hurlers, as well as one of the State's heaviest wielders of the willow.



Suggs



Weldon



Coe



Evans



Most of the mound duty will be done by Coon Weldon, Johnny Suggs, and Joe Commander. Able relief men are to be found in Louis Anderson and Bill Cox. Pitt Bird will be back of the plate, with Baron Cavin as understudy. Louis Folley and Cab Blackwell will alternate at first base; Little Shorty Horne will hold down second and Hick Harvin will perform at short. This smoothly working infield will be rounded out with Giles Batchelor, stellar freschman player in '36, at third base.

Hawk Evans, mighty P. C. slugger, will patrol the left garden; Wallace Coe will be in centerfield, and rightfield will go to Weldon or Suggs, depending on who is pitching. Heavyweight Isom and Curly Clements, although not in the regular lineup, will make a pair of good utility men.



Yow



Blackwell



Bird



Batchelor



The Blue Hose nine will lose six regulars at the end of the season by the graduation route. Weldon, Suggs, Bird, Harvin, Evans and Coe receive their sheepskins in June. All of these men, with the exception of Weldon, a Junior College man, have turned in three years of superb service in their respective positions, and all of them will be sorely missed in the 1933 outfit. Coach Pudge Plowden will more than likely be able to fill in the depleted ranks of the varsity with some promising freshmen material which he is developing.

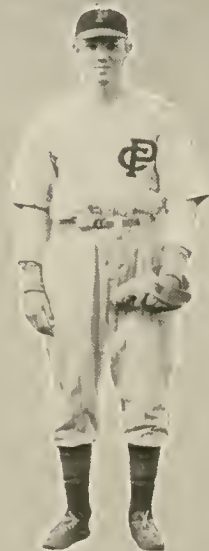
It is a matter of note that a number of Big League scouts have been on the trail of two or three P. C. players, and it is quite probable that these men will go into professional baseball after graduation.



Horne



Tom



Harvin



Folley



Synonymous with the brightening outlook of P. C.'s baseball team has been a reawakening of public interest in the college version of the national sport. The additional bleachers have been completed, and Young Field is girded with a new board fence, thanks to Coach Johnson and the N. Y. A.

The nine is expected to play to capacity crowds at home all season, if it lives up to pre-season dope. Coach Galloway, formerly of the Philadelphia Athletics and voted world's greatest shortstop several years ago, has added something of the Big Time glamor to college baseball in Clinton, and with a potential state championship team, baseball should regain its rightful place in the college athletic calendar.



Plowden



Cox



Cavin



Commander

1937 BASEBALL SCHEDULE



"CHICK" GALLOWAY
Coach

March 30—Wofford at Spartanburg.
 April 1—Newberry at Clinton.
 April 3—Wofford at Clinton.
 April 6—Furman at Greenville.
 April 12—Furman at Clinton.
 April 14—Newberry at Newberry.
 April 15—Clemson at Clinton.
 April 17—Citadel at Charleston.
 April 19—Carolina at Clinton.
 April 26—Citadel at Clinton.
 April 27—Erskine at Due West.
 April 29—Erskine at Clinton.
 May 4—Carolina at Columbia.
 May 6—Clemson at Clemson.



JOHN SUGGS
Captain

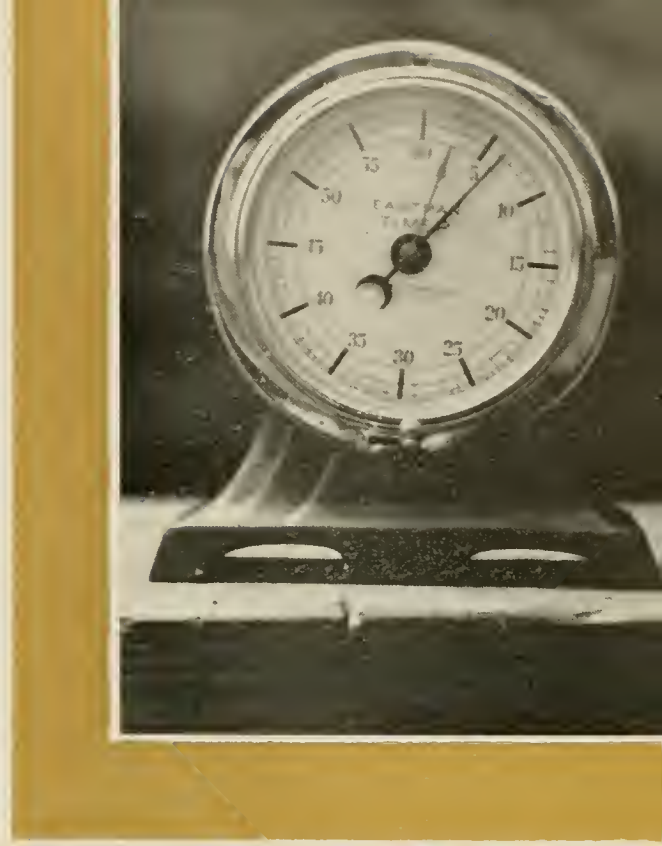


VARSITY SQUAD

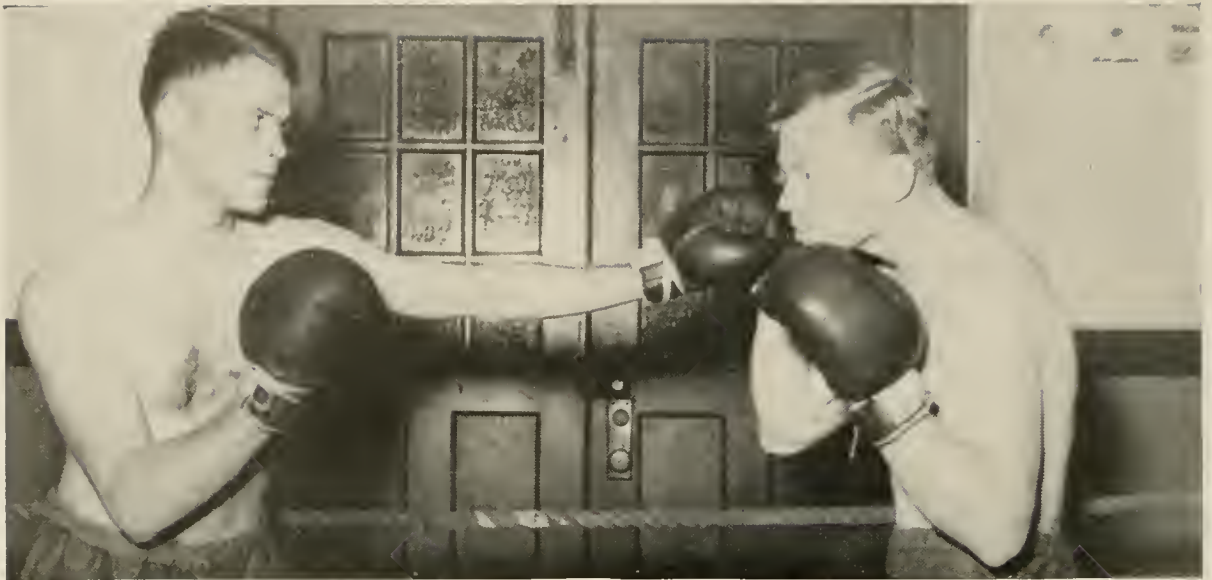
• • the Pac Sac niner

een thirty-seven •

One Hundred Fourteen



B o x i n g



After a recess of a year, Coach Walter Johnson's mittmen took to the ring again this season, meeting with only fair success. Badly handicapped by lack of experience, the team learned much which should stand them in good stead in the coming year.

Captain Claus Cappelmann was the only man who had fought in a college ring previously, and the remainder of the team, intramural finds, had boxed only in the annual R. O. T. C. shows. Todd, Lambright, Burns, Kimbo, Booth, and Clements, however, all turned in creditable, if not always successful, performances.

The team lost matches with the Atlanta Y. M. C. A., Clemson, High Point Y. M. C. A., and Carolina.



Cappelmann



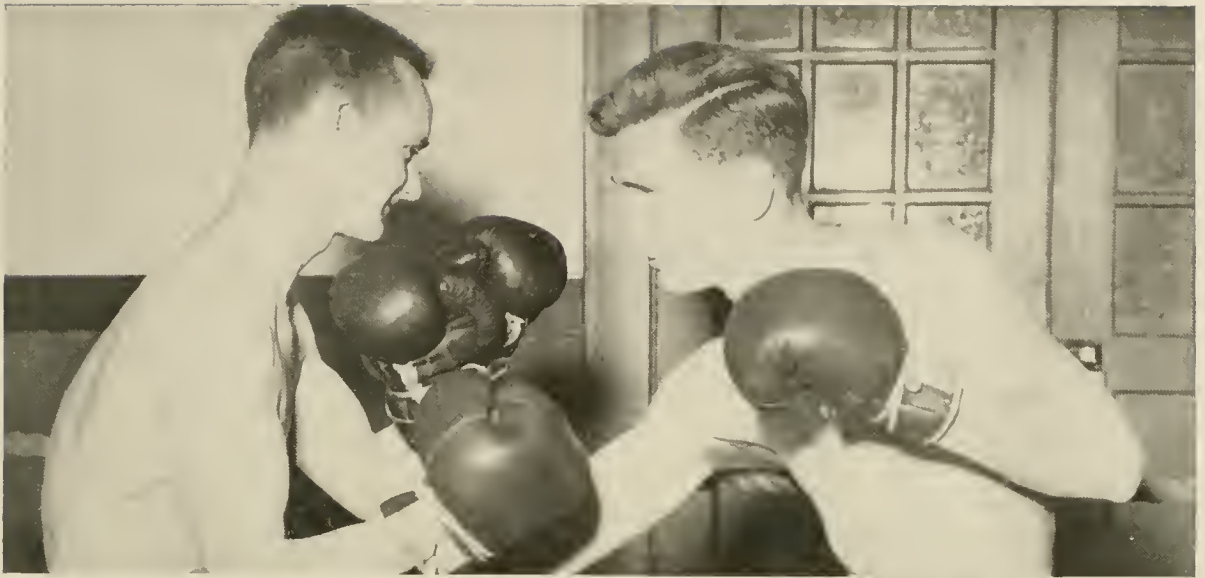
Burns



Clements



Booth



The boxers fared better in the annual Golden Gloves Tournament than in collegiate competition, however. Clements, Burns, Cappelmann, and Todd entered the Greenville event, and Clements and Burns emerged as champions in their respective classes.

Prospects for next year's team seem to indicate a more successful season. Several excellent men are coming up from the freshmen class, and the intramural bouts disclosed some talent that, with training, should develop quite well.

Coach Johnson may be relied upon to turn out a team of fighters, whether they be winners or not, and with a year's badly needed experience behind them, we may expect a better ring team in 1933.



Todd



Kimbo



Pambright



Carson



ERNEST PROPST
Manager

1937 RESULTS

Atlanta Y. M. C. A.	7	P. C. 1
Clemson	6	P. C. 2
Carolina	5	P. C. 3
High Point Y.M.C.A.	5	P. C. 3



WALTER JOHNSON
Coach



VARSITY SQUAD

• • the Pac Sac nineteen thirty-seven •

One Hundred Eighteen

thirty-seven •



T r a c k



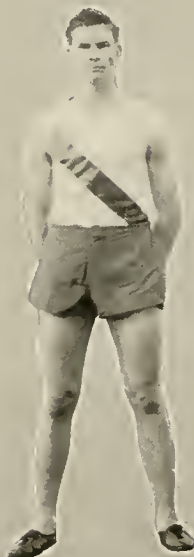
Jacobs



Williams



Thompson



Green



Hemphill

Presbyterian College, known as the center of track activity in South Carolina, put out a 1937 team that lost only one dual meet in the state, but wound up in fourth position in the greatest of the Palmetto cinder shows, the State Meet.

Opening against South Carolina in Columbia, the Blue Hose defeated the University by a narrow margin, the meet being decided by the excellent broadjumping of Hollis and Thompson. The University of Georgia, met in Athens on the following weekend, proved to be no match for the Blue Hose. The Georgians, more than likely Southeastern Conference champs, were greatly aided by their Olympic stars, Towns and Packard, in piling up a huge score over the Carolinians.

P. C. lost its only dual meet in the state the following weekend to the Clemson Tigers.



Coach McMillian's men defeated Furman and Citadel in order on the local oval, showing up impressively on both occasions, especially in the track events. The remaining meet scheduled, a three-way affair between Erskine, Wofford, and P. C., was rained out, and the cinder men began pointing toward the State Meet.

For the second time in state history, the cream of South Carolina athletes gathered under the floodlights of Johnson Field for the State Meet, held on May 1. Clemson, having qualified more men in the preliminaries than any of the other schools, was a natural favorite, and came out on top, leading Carolina by the narrow margin of one point, as the Tigers were disqualified in the mile relay by a foul on one of the curves.



Shaw



Cole

Wicker

Hollis

Hipp

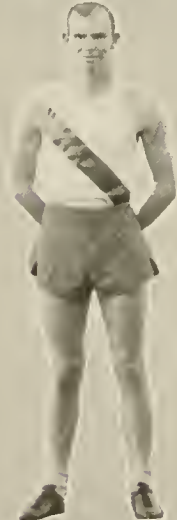


P. C. did not win a first place in the entire meet, but managed to garner nineteen points from third and fourth places to end up in fourth position, trailing Citadel by two points. Dick Little, of Carolina, won individual scoring honors with $15\frac{3}{4}$ points, after a close race with Carter of Clemson. Bob King, versatile Furman athlete, set the only new state record as he hurled the discus 142 feet 6 inches to break the old record held by himself.

P. C.'s freshmen tracksters, paced by Red Rawls, who set a new record for the Freshman mile, also came out in fourth position in the state yearling meet. Several good men from the freshmen ranks will be called upon next year to fill key places in the varsity lineup left vacant by graduating seniors.



Beeman



McSween



Davis



Boswell



Prospects for a cinder team in 1938 that will more nearly approach the standards of P. C. track of old are rather promising, although it may be a bit early for much predicting.

In the dashes, Dennard and Cole will be available again, and may be counted upon to give trouble to any competition. Reynolds will run the high hurdles in his same excellent form, and he and Davis on the low hurdles should turn in many wins. In the middle distances Rawls is expected to star, while Huntley and McCully will hold down the longer runs. Macon Hipp and Joe Hollis will be the foundation of the field events, aided by new men developing out of the freshmen class, while Hemphill, Beman, and McSween should take all competition in their line.

Captain J. B. Jacobs, Walt Williams, Biffet Green, and Bill Thompson, lost by graduation, will be sorely missed.



Dennard



Huntley



Bonner



Ritch



J. W. ANTHOINE
Manager

1937 VARSITY RESULTS

Clemson	82	P. C.	19
Georgia	99	P. C.	27
Furman	57	P. C.	74
Carolina	61	P. C.	65
Citadel	49	P. C.	76
Florida	92	P. C.	34



ROY FOREHAND
Coach

1937 FROSH RESULTS

Clemson	81	P. C.	50
Furman	85	P. C.	45
Carolina	87	P. C.	41



FRESHMAN TRACK SQUAD

the Pac Sac nineteen

One Hundred Twenty-four
en thirty-seven



Tennis



Although Presbyterian College is now recognized as the center of the South Carolina tennis empire, her outlooks for a successful 1937 season are not very bright. Handicapped by the loss of several excellent players, 1936 graduates, the team this year will have to rely on a good bit of untried talent.

Co-Captains George Beatty and Cotton Parham should turn in creditable performances, and John Woodward and Frank Johnston may be counted on to come through with several wins. Harris Gray is the only other experienced man on the squad, and he may be expected to win his share of the contests.



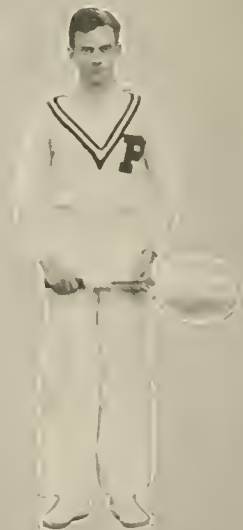
Beatty



Woodward



Adams



Johnston



The annual Tennis Clinics, in which national stars give exhibitions and instructions, have gained national publicity for P. C. Such outstanding net stars as Bitsy Grant, Mr. and Mrs. Johnny Van Ryn, Wilmer Allison, and Jack Stockton have been the leaders in these clinics, attended not only by South Carolina tennis fans, but by enthusiasts from all the surrounding states.

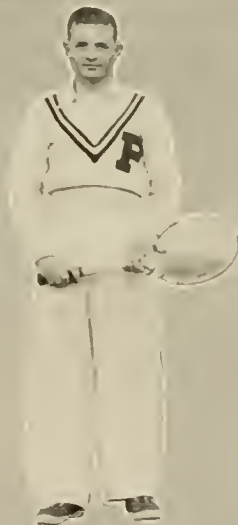
The State Tennis Meet will be held in Clinton for the first time this year, on the excellent courts which were completed last fall. Although P. C. is not expected to go very far in the state this season, she should be a formidable contender next year, as several excellent freshmen prospects will be available.



Parham



Boykin



Gray



Jacobs



FENCING SQUAD

A. R. McELROY*Captain*

TEAM MEMBERS

R. W. Williams

W. J. Langston

A. J. Briggs

T. W. Newland

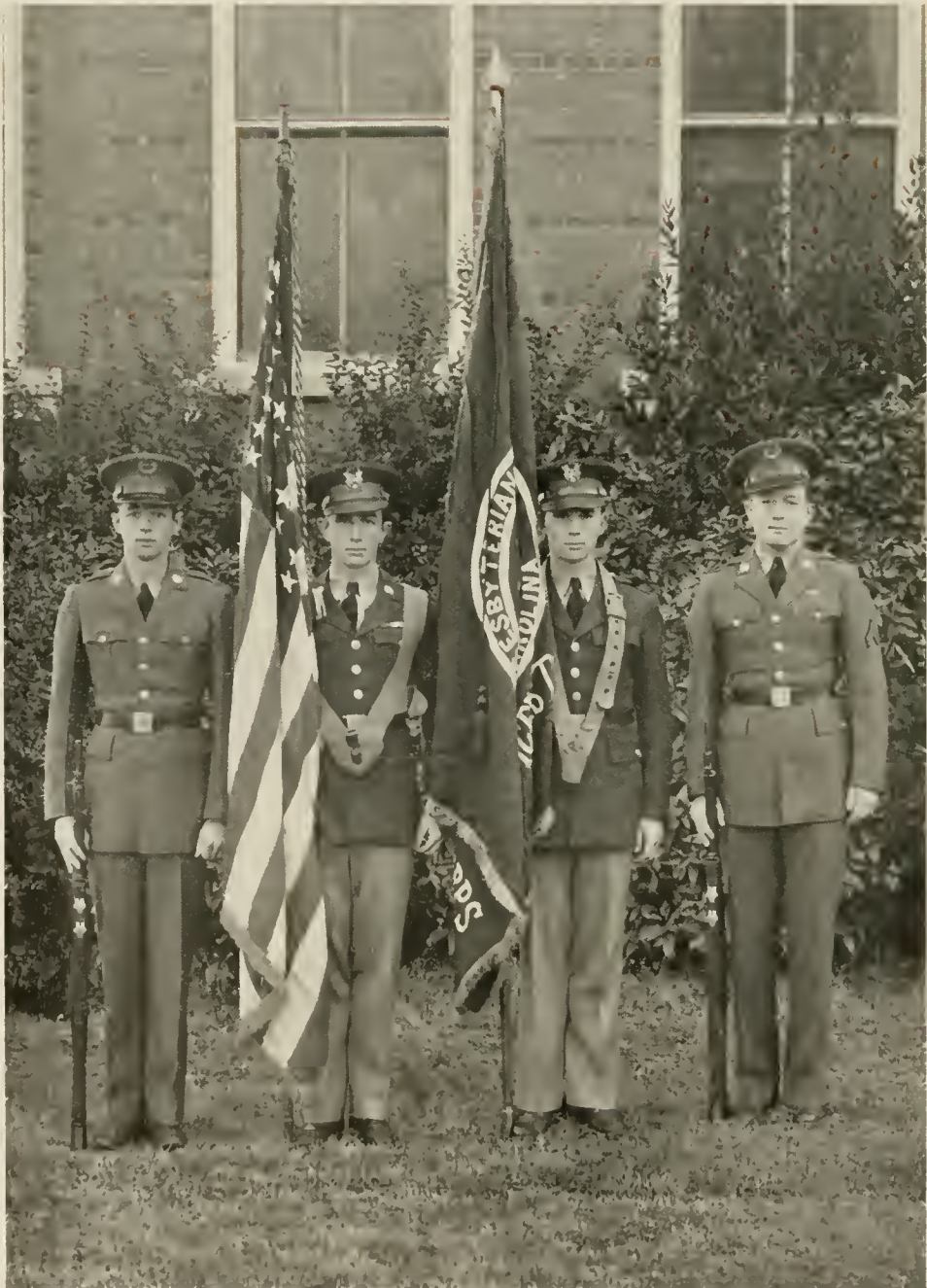
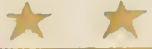
H. P. Skinner

the Pac Sac nineteen

One Hundred Twenty-eight
een thirty-seven ●



Military



THE COLORS



WYSOR

HARDING

YOUNG

MAJOR R. E. WYSOR.....P. M. S. & T.
 MAJOR F. C. HARDING.....Assistant P. M. S. & T.
 SERGEANT STERLIN YOUNG.....Assistant in Military Department

CADET STAFF

<i>Lieutenant Colonel</i>J. K. COLLINGS	<i>Master Sergeant</i>E. A. JOHNSON
<i>Major</i>J. B. JACOBS	<i>Master Sergeant</i>G. S. BEATTY
<i>Captain</i>R. A. SHOEMAKER	<i>Sergeant</i>C. D. CONRAD
<i>Captain</i>J. W. THOMPSON	<i>Sergeant</i>C. H. MCLEOD





COMPANY A

Captain: G. E. Plunkett, Commanding
First Sergeant: C. L. Anderson

FIRST PLATOON

First Lieutenant: F. T. Wallace, Commanding
Platoon Sergeant: J. S. Caldwell
Sergeants: B. G. Shaw, J. A. Witherspoon

Corporals: Lambright, E. G.; Sullivan, L. P.; Donnan, J. D.

Privates: Atkins, C. H.; Henderson, L. S.; Buie, D. M.; Dingeman, D. R.; Timmons, R. K.; Fleming, H. C.; Huggins, H. G.; Abercrombie, J. A.; Carraway, G. W.; Fisher, D. H.; Rawls, J. L.; Taylor, G. A.; Jacobs, W. P.; Barnhill, J. W.; Lipsey, S. T.; Shuler, M. D.; Trammel, C. T.; Cogburn, F. L.; Batchelor, G. G.

SECOND PLATOON

First Lieutenant: J. P. Majors, Commanding
Platoon Sergeant: E. U. McRae

Sergeants: A. J. Briggs, H. B. Carpenter

Corporals: Boswell, R. L.; Hutchinson, R. F.; Clements, J. L.

Privates: Alexander, J. P.; Ballard, J. P.; Davidson, L. H.; Evans, W. W.; Griffin, J. C.; Thomson, J. R.; Arnold, W. D.; Sadler, D. H.; Henley, D. P.; Jones, W. H.; McGregor, J. S.; Perry, I. M.; Buchan, R. G.; Adams, L. H.; Hammell, L. J.; Reeves, J. M.; Harrington, R. C.; McCully, C. W.; Crews, M. S.



COMPANY B

Captain: J. E. Patrick, Commanding
First Sergeant: R. W. Williams

FIRST PLATOON

First Lieutenant: E. W. Evans, Commanding
Platoon Sergeant: John Woodward

Sergeants: R. L. Waldrep, H. G. Wardlaw, C. B. Holcombe

Corporals: McAdams, C. H.; Davis, D. W.; Taylor, L. H.

Privates: Barnes, T. K.; Bryant, E. D.; Folley, L. B.; Mixson, M. C.; Moore, B. N.; Pearson, J. A.; Turner, C. H.; Booth, F. W.; Boykin, L. M.; Griffin, R. M.; Hudson, D. W.; Terrell, J. M.; Hall, L. E.; Anderson, S. T.; Davis, G. P.; Kee, W. S.; Knox, R. C.; Richardson, J. S.; Skinner, H. P.

SECOND PLATOON

First Lieutenant: Walter Williams, Commanding
Platoon Sergeant: W. P. Burns

Sergeants: M. M. Hemphill, H. F. Blalock

Corporals: Pope, W. E.; Ritch, M. R.; Dennard, J. J.

Privates: Adair, A. S.; Carmichael, A. Y.; Ellison, R. J.; Morrison, D. M.; McKellar, L. B.; Trent, H. E.; Jones, J. W.; Brooker, W. E.; Gilliam, H. D.; Swift, W. F.; Roff, G. L.; Godfrey, J. E.; Kimbo, C. T.; Maher, J. P.; Allen, F. L.; Bethea, T. M.; Huntley, C. E.; Mabry, G. L.



COMPANY C

Captain: B. W. Legare, Commanding
First Sergeant: M. A. Hipp
First Lieutenant: D. M. Mann, Attached

FIRST PLATOON

First Lieutenant: M. W. Bird, Commanding
Platoon Sergeant: W. C. Keller
Sergeants: W. Blackwell, J. L. Lyle

Corporals: Reynolds, D. H.; McSween, W. C.; Todd, W. B.

Privates: Byrum, J. F.; Dixon, T. E.; Holden, L.; Fenn, H. R.; Potter, C. W.; Perry, J. D.;
Anthoine, J. W.; Jacobs, C. D.; Moore, W. W.; Paul, H.; Strain, H. E.; Barnes, C. E.; Ellison,
T. H.; Huntley, D. M.; Roach, R. B.; McSwain, C. C.; Bullock, W.

SECOND PLATOON

First Lieutenant: W. J. Langston, Commanding
Platoon Sergeant: W. A. Moore
Sergeants: J. M. Commander, C. W. Wannamaker

Corporals: Clement, P. M.; Jones, T. Q.; Hafley, J. B.

Privates: Hansell, W. A.; Booth, J. R.; DuBose, S. R.; Horton, T. E.; Rutledge, H. M.; Baldwin,
W. C.; Buchan, J. R.; Burgess, R. A.; Carson, D. M.; Gilmore, W. F.; Pitts, W. R.; Rogers,
R. T.; Worrell, R. J.



BAND

First Sergeant: M. C. Patterson. Commanding

First Sergeant: Harris Gray. Director

CORPORALS

BLACK, R. F.

CULP, J. L.

SHAMHART, W. H.

PRIVATES

Heckle, L. G.

Horne, E. J.

Wylie, J. M.

Cunningham, J. P.

Erwin, A. M.

Miller, W. B.

Norton, M. M.

Paschal, H. W.

Stubbs, H. T.

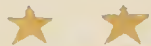
Combs, I. E.

Clark, R. L.

Cousins, W. L.

Heeth, N. S.

Brown, H. P.



RIFLE TEAM

J. E. PATRICK.....*Captain*

G. E. Plunkett

M. M. Hemphill

M. W. Bird

M. A. Hipp

J. P. Majors

G. S. Beatty

J. W. Thompson

E. U. McRae

E. A. Johnson



S p o n s o r s

*"Fair as a star, when only one
Is shining in the sky."*

—WORDSWORTH.



MISS NELLE TURNER
COVINGTON, GA.
The PaC SaC Sponsor





MISS MARGARET GLOVER
ATLANTA, GA.
PaC SaC Business Staff Sponsor





MISS SARA MARSHALL
GREENVILLE, S. C.
Student Body Sponsor



MISS LEILA MAYES
FLORENCE, S. C.
Pan-Hellenic Council Sponsor





MISS ELIZABETH RAUCH

ROCK HILL, S. C.

The Blue Stocking Sponsor



MISS ZAIDA THOMAS
WYTHEVILLE, VA.
The Collegian Sponsor





MISS ELSIE LIGON
ANDERSON, S. C.
Senior Class Sponsor





MISS SARAH HARRISON
COLUMBIA, S. C.
*The Blue Stocking Business Staff
Sponsor*





Miss DOLLY PHILLIPS

ATLANTA, GA.

Battalion Sponsor





MISS SUELLA DENSON
CLINTON, S. C.
Y. M. C. A. Sponsor





MISS SHANNON SIMPSON

CLINTON, S. C.

Football Sponsor





MISS BETTY PATRICK
COVINGTON, GA.
Blue Key Sponsor



MISS VERA EDWARDS
JACKSON, GA.
PaC SaC Advertising Staff Sponsor

MISS FLORA COKER

HARTSVILLE, S. C.

The Collegian Business Staff Sponsor



MISS BOBBYE PONDER

RHINE, GA.

PaC SaC Art Sponsor



MISS ALICE ARMSTRONG

ATLANTA, GA.

Blue Stocking Advertising Staff Sponsor



MISS SUZIE AUDRAIN

PARIS, FRANCE

International Relations Club Sponsor



MISS NORINE HUEY
COLUMBIA, S. C.
Freshman Class Sponsor



MISS JEAN HOLLAND
PENSACOLA, FLA.
Sophomore Class Sponsor



MISS MEMRIE GARY
GREENWOOD, MISS.
Junior Class Sponsor



MISS KATHRYN OWENS
LAURENS, S. C.
Basketball Sponsor

MISS DELLE STITH
MULLINS, S. C.
Baseball Sponsor



MISS JANIE E. JACOBS
CHERAW, S. C.
Track Sponsor



MISS ELIZABETH MCGEE
LAURENS, S. C.
Tennis Sponsor



MISS DOROTHY GRIMBALL
JOHNS ISLAND, S. C.
Boxing Sponsor

MISS MEMRIE GARY
GREENWOOD, MISS.
Orchestra Sponsor



MISS ELIZABETH HUNTER
HENDERSONVILLE, N. C.
Band Sponsor



MISS ORA LEE JACOBS

CHERAW, S. C.

Company A Sponsor



MISS ANNE MARTIN

COLUMBUS, GA.

Company B Sponsor

MISS DOROTHEA LEGARE
NORTH CHARLESTON, S. C.
Company C Sponsor



MISS KATE BRACKNELL
PLUM BRANCH, S. C.
Dramatic Club Sponsor



MISS MARY BUFORD PEGRAM
CHESTER, S. C.
Pi Kappa Alpha Sponsor



MISS HELEN BROWNLEE
LAURENS, S. C.
Pi Kappa Phi Sponsor



MISS ANNA BELLE GEIGER

MANNING, S. C.

Kappa Alpha Sponsor



MISS DOROTHY VAUGHAN

ATLANTA, GA.

Beta Kappa Sponsor



MISS LORETTA MORGAN
COLUMBIA, S. C.
Alpha Lambda Tau Sponsor



MISS SARAH HARRISON
COLUMBIA, S. C.
Alpha Kappa Pi Sponsor

MISS MARY DES PORTES

WINNSBORO, S. C.

Chi Beta Phi Sponsor



MISS ANNIE LEE JACKSON

CLINTON, S. C.

Delta Chi Alpha Sponsor



MISS LOUISE HUNTER

LAURENS, S. C.

Canteen Sponsor



MISS ELIZABETH COLLINGS

ATLANTA, GA.

Glee Club Sponsor

MISS VERA McLEOD
OCALA, FLA.
Ministerial Club Sponsor



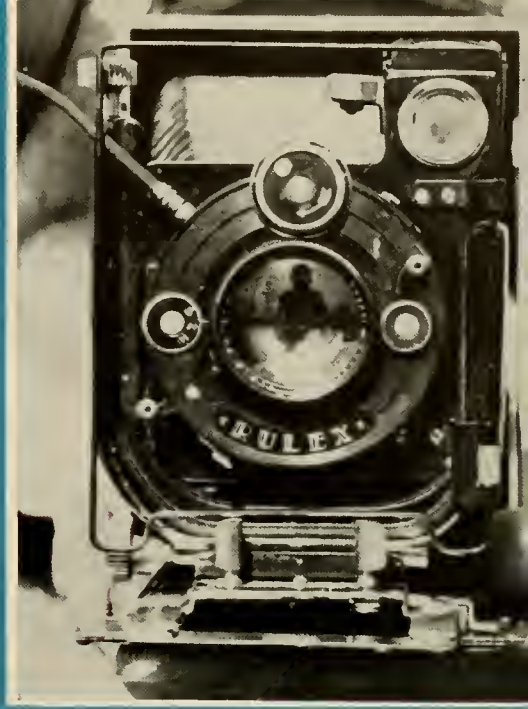
MISS RACHEL JACKSON
TRYON, N. C.
Fencing Sponsor



MISS ELIZABETH HUNTER
HENDERSONVILLE, N. C.
Golf Team Sponsor



MISS MARTHA SUSAN CAMPBELL
WYTHEVILLE, VA.
Sigma Kappa Alpha Sponsor



Features



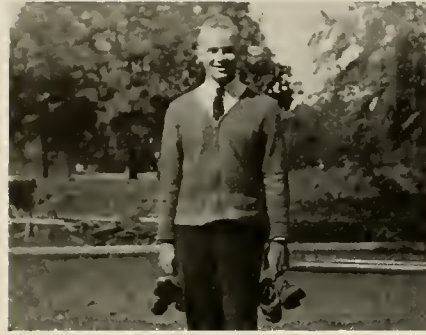
Jeff gets a chopping



Sharpshooters



Dream Train IV



McIntosh's



Making Movies



Winter



The Major's Home



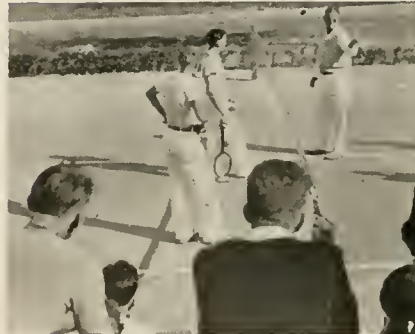
Tennis Clinic



Gym



Woes of a Manager



Stockton Shows 'em



Nick



Clouds Over Smythe



More Tennis Clinic



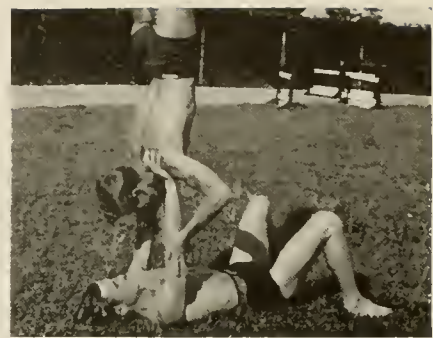
P. C.'s Missionaries



Wee Willie's Domain



Gilmore



Tarze in Action



Sarge and Major



Indoor Recreation



Betty and Bob



The Varsity



Lerov Springs Gift



G-Men



Practice



Ad Building



Montague Skooting Stuff



Reconstruction



Hemphill's Boudoir



Hank



Homecoming



New Water Line



Barrel Club



Unholy Robber



Over the Top



Baby Ray



Gymnast



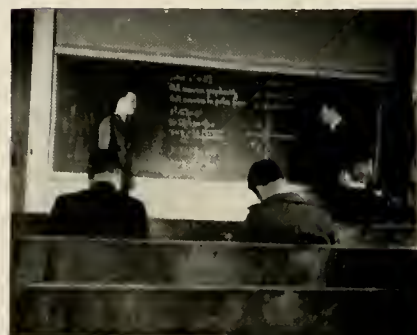
Heavy Reader



Dr. Dudley



High Pocket



Math



The Skeeter



P. C. Co-eds



Montague's Gallery



Sponsors



Cross Country



Plaza



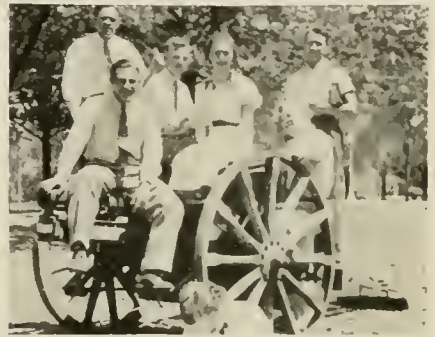
State Meet



Looking Down



Chi Beta Phi



Loafers



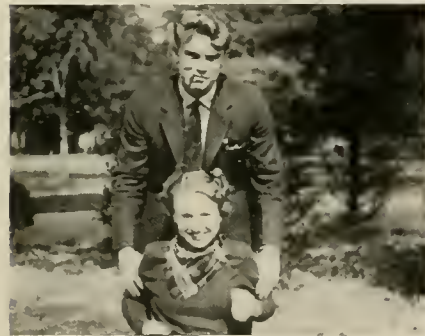
Towns and Davis



"Aggie"



Single Tingle



Nancy and Hammond



Lonnie Mac



Favorite Pastime



Last Curve



"A" Section



Frog Hollow



Jim Collings
BEST ALL ROUND (TIE)
MOST POPULAR
MOST FRIENDLY
OUTSTANDING CADET



Jack McAlpine
BEST SPORT



J.B. Jacobs
BEST ALL ROUND (TIE)
BEST PHYSIQUE
BEST ALL ROUND ATHLETE



Richard Yow
BEST BUSINESS MAN



Simon Legate
VE LADIES MAN



Cliff McLeod
MOST DIGNIFIED (TIE)



Wandell Williams
BEST SPEAKER



Harris Gray
MOST TALENTED



Sadler Love
BEST MAGAZINE WRITER
BEST JOURNALIST



Bebe Dillard
MOST POPULAR COED



Stuart Campbell
MOST INTELLECTUAL
BEST STUDENT



Will Wallace
MOST HANDSOME
(TIE)



Coon Weldon
MOST HANDSOME
(TIE)



Raleigh Shoemaker
MOST POPULAR (TIE)



Chester Keller
MOST DIGNIFIED (TIE)



Joe Patrick
MOST LIKELY TO SUCCEED



Jake and cell-mates



Hunkey Catches K. P.



Home, Sweet Home



"P. C."



The Major



Company Street



Full Field Inspection



Gas!



Four Inch Mortar



Big Jim in Action



Relic



Pistol Range



Cosmolite—tons of it



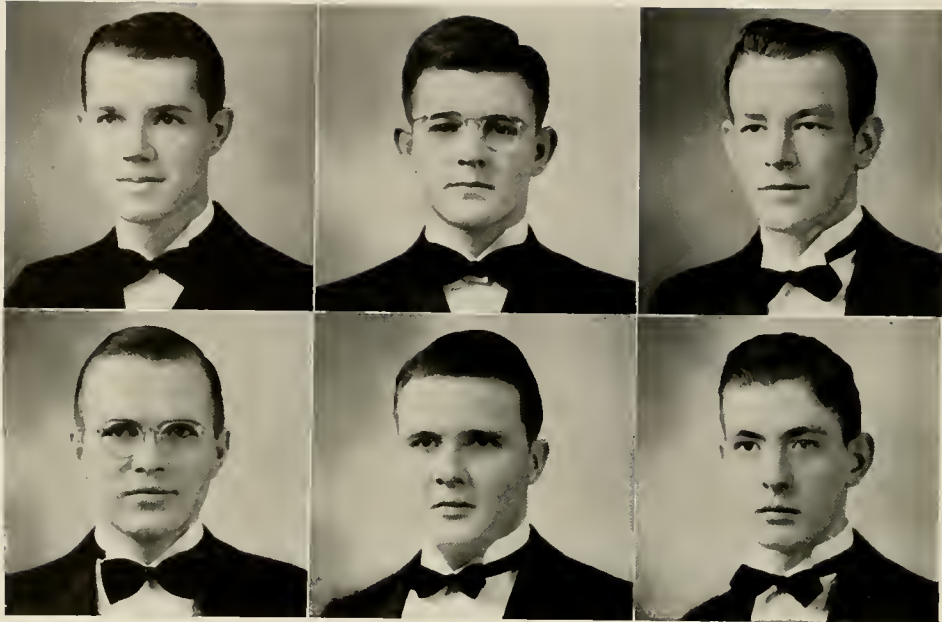
Jake takes a rest



Only cool spot around



Fraternities



HARVIN
PATRICK

BUCHAN
HUTCHINSON

PENLAND
CAMPBELL

PAN - HELLENIC COUNCIL

HARRY T. HARVIN.....*President*
 E. SMITH BUCHAN.....*Vice-President*
 J. B. PENLAND.....*Secretary-Treasurer*

REPRESENTATIVES

HARRY T. HARVIN.....*Kappa Alpha*
 E. SMITH BUCHAN.....*Beta Kappa*
 J. B. PENLAND.....*Alpha Lambda Tau*
 JOSEPH E. PATRICK.....*Pi Kappa Alpha*
 JOHN C. HUTCHINSON.....*Pi Kappa Phi*
 STUART B. CAMPBELL.....*Alpha Kappa Pi*

the Pac Sac nineteen

One Hundred Seventy-six
 thirty-seven

PI KAPPA ALPHA



Founded at the University of
 Virginia, 1868
 Mu Chapter Established, 1890

BROTHERS IN FACULTY

- D. J. Brimm
- F. D. Jones
- R. E. Wysor

BROTHERS IN COLLEGE

SENIORS

- J. E. Patrick
- R. A. Shoemaker
- J. R. McAlpine, III
- J. D. Hughes
- L. D. Weldon
- A. J. Plowden
- L. S. Quarterman
- A. C. McSween

JUNIORS

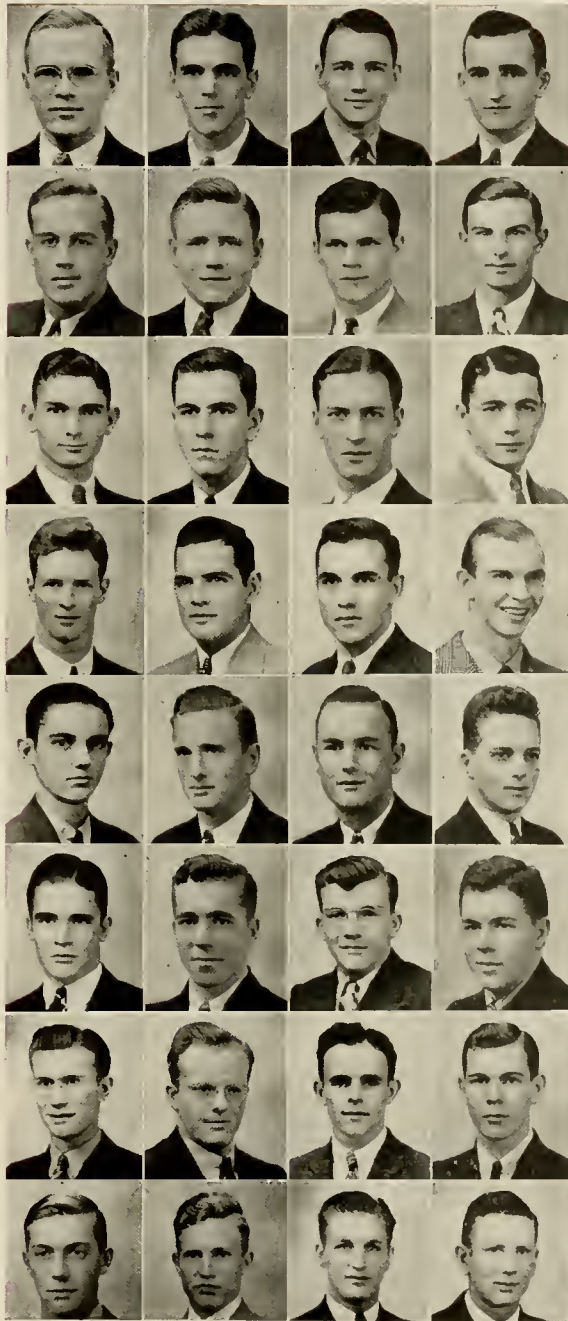
- E. A. Johnson
- W. A. Moore
- W. B. Peecksen
- John Woodward
- W. P. Burns
- E. U. McRae

SOPHOMORES

- D. M. Carson
- W. C. McSween
- J. B. Haffey
- E. G. Lambright
- W. B. Todd
- W. H. Shambart, Jr.
- C. E. Huntley
- E. J. Horne
- W. H. Jones
- C. T. Kimbo
- Lester Holden
- W. L. Cousins

FRESHMEN

- J. M. Reeves
- J. B. McRee
- B. B. Avcock
- W. S. Kee
- J. W. Jones
- J. R. Thomason





PI KAPPA PHI



Founded at the College of
Charleston, 1904
Beta Chapter Established, 1907

BROTHERS IN FACULTY

H. E. Sturgeon
L. S. McMillan
J. H. Hunter
H. T. Swedenburg
W. P. Jacobs

BROTHERS IN COLLEGE

SENIORS

W. M. Degner
R. L. Clark
N. S. Hays
J. C. Hutchinson
T. B. A. Jones
F. S. Love
J. W. Steenbergen
B. W. Legare
J. W. Thompson

JUNIORS

J. M. Commander
W. F. Blalock
C. L. Anderson
L. J. Hammel, Jr.
W. M. Jones
E. F. MacLeod
N. A. Wilson

SOPHOMORES

R. A. Burgess
F. W. Booth
P. M. Clement
J. L. Clements
T. T. Coleman
C. B. Holcombe
R. F. Hutchinson
M. C. Mixson
J. P. Ballard

FRESHMEN

W. E. Brooker
James Carroll
J. M. Dalziel
L. G. Roff
M. D. Shuler
H. M. Rutledge
H. G. Huggins
W. G. Caraway
H. E. Trent
A. M. Erwin

• • • the Pac Sac since
been thirty-seven •

One Hundred Seventy-eight

been thirty-seven •

the Pac Sac nineteen thirty-seven

KAPPA ALPHA



Founded at Washington and Lee University, 1865
Beta Pi Chapter Established, 1924

BROTHER IN FACULTY

Kenneth Baker

BROTHERS IN COLLEGE

SENIORS

- H. T. Harvin
- F. E. Propst
- W. K. McIntosh
- F. T. Wallace
- W. R. Wallace

JUNIORS

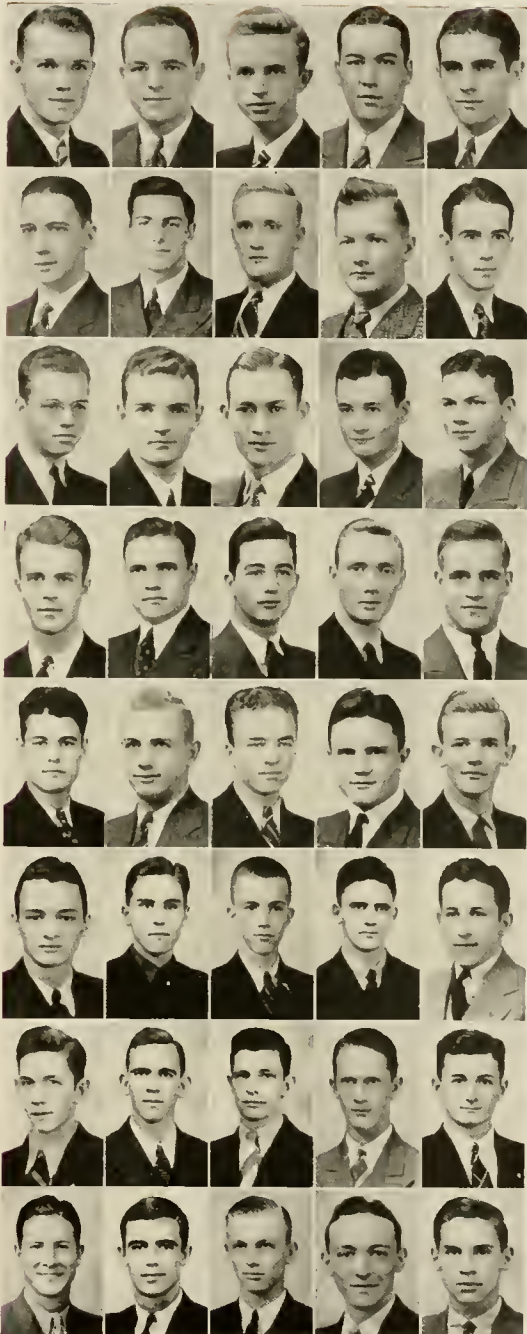
- T. E. Addison
- G. S. Beatty
- H. P. Brown
- J. S. Caldwell
- H. B. Carpenter
- N. O. Creech
- Harris Gray
- M. M. Hemphill
- L. W. McLeod
- M. C. Patterson
- J. W. Todd
- R. W. Williams
- J. A. Witherspoon
- A. R. McElroy
- Max Jones

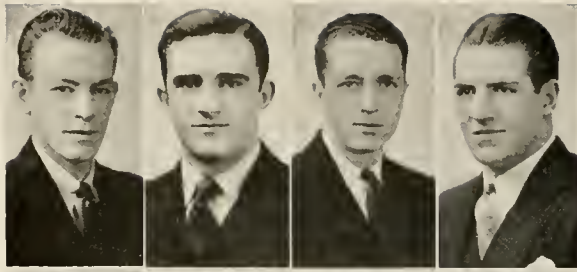
SOPHOMORES

- R. F. Black
- R. L. Hoswell
- J. M. Hiers
- P. N. Moore
- J. A. Pearson
- D. H. Reynolds
- J. M. Wylie
- Marion Moore
- William Gilmore

FRESHMEN

- L. M. Boykin
- J. L. Spratt
- D. M. Bule
- J. A. Nexsen
- T. E. Dixon
- S. D. Ellison
- J. S. Richardson
- Huit Paul
- R. G. Hendrickson
- C. B. Thompson
- Be N. Moore





ALPHA LAMBDA TAU



Founded at Oglethorpe
University, 1916
Iota Chapter Established, 1927

BROTHERS IN FACULTY

W. L. Jones
S. M. Huntley
D. O. Rhame

BROTHERS IN COLLEGE

SENIORS

J. B. Penland
E. W. Evans

JUNIORS

William Blackwell
M. A. Hipp
R. L. Waldrep

SOPHOMORES

L. H. Taylor
F. M. Miller
J. J. Dennard
L. G. Heckle
W. E. Pope
G. G. Batchelor
R. T. Rogers
S. C. McAdams
J. D. Perry

FRESHMEN

W. F. Swift
W. B. Miller
C. H. Turner
J. C. Griffin
J. H. Auld

• • • the Pac Sac nineteen

One Hundred Eighty
thirty-seven •

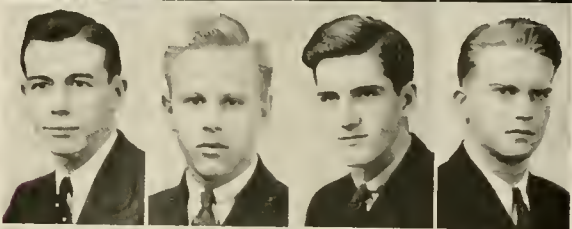
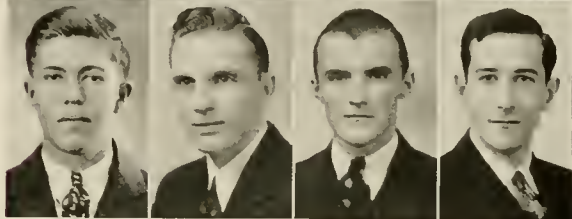
the Pac Sac nineteen thirty-seven

BETA KAPPA



Founded at Hamline
University, 1901
Alpha Eta Chapter Established.
1930

BROTHERS IN COLLEGE



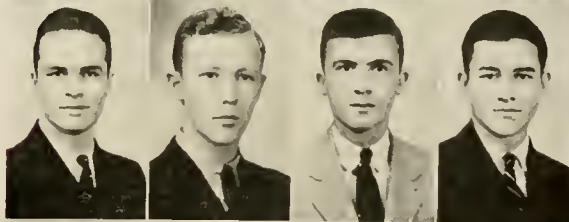
SENIORS

- E. S. Buchan
- M. H. Jacobs
- J. K. Collings
- M. H. Parham
- L. M. Parham
- C. E. Johnson
- D. M. Mann
- Ralph Caldwell



SOPHOMORES

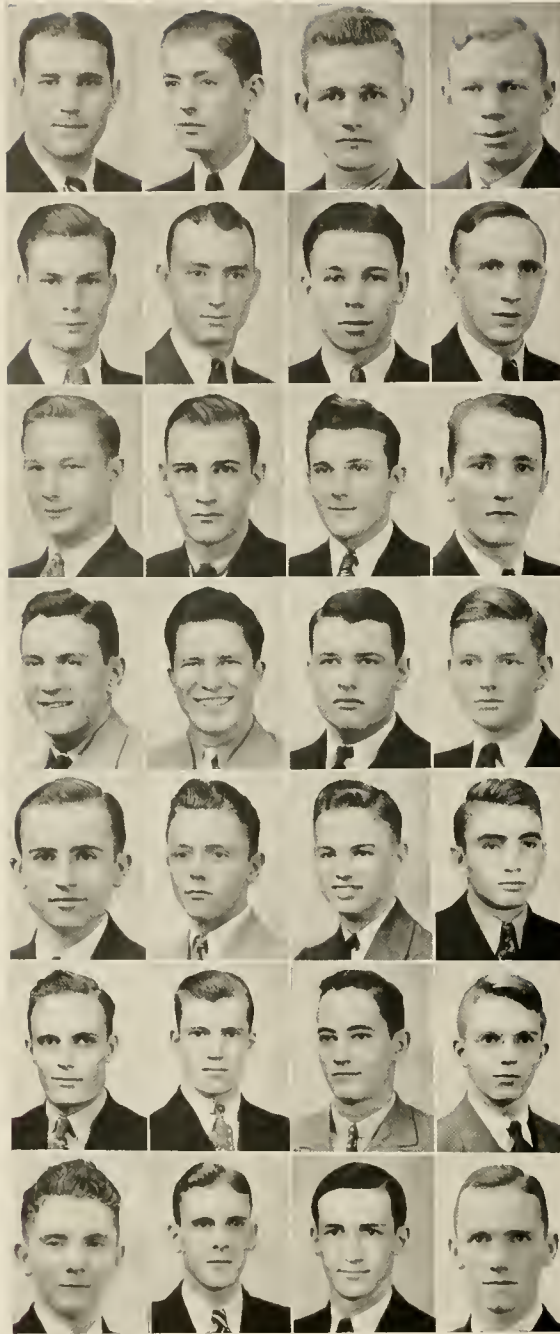
- M. R. Ritch
- T. M. Bethea
- W. P. Jacobs
- L. H. Adams
- J. R. Booth
- L. B. Folley
- C. D. Jacobs
- W. A. Smith



FRESHMEN

- G. P. Davis
- H. M. Crum
- R. G. Buchan
- J. R. Buchan
- T. E. Horton





ALPHA KAPPA PI



Founded at Newark College of
Engineering, 1921
Eta Chapter Established, 1928

BROTHERS IN COLLEGE

SENIORS

M. W. Bird
S. B. Campbell
R. R. Yow
C. M. Cappelmann
W. E. Green

JUNIORS

W. K. Cox
S. Croker
G. F. Landen

SOPHOMORES

C. H. Atkins
T. K. Barnes
Cecil Buffkin
D. H. Fisher
J. L. Culp
D. W. Davis
W. W. Evans
J. C. Bonner

FRESHMEN

J. W. Barnhill
M. S. Crews
F. L. Cogburn
J. E. Godfrey
E. H. Strain
T. H. Ellison
R. J. Ellison
H. C. Fleming
R. C. Knox
W. W. Moore
R. K. Timmons
J. A. Abercrombie

• • the Pac Sac nine

teen thirty-seven •
One Hundred Eighty-two

the Pac Sac nineteen thirty-seven

ALPHA PSI DELTA



Founded at Presbyterian College, 1933

SISTERS IN COLLEGE

SENIORS

Frances Spratt
Mary Ella Osman
Eva Wilson
Myra Wise
Frances Shaw
Mary Motes

JUNIORS

Reta Chandler
Evelyn McCrary
Elizabeth McGee
Verna McLeod
Joyce Pitts
Bebe Dillard
Sara Salters
Nancy Young

SOPHOMORES

Agatha Jones
Laetitia Jones
Helen Mahaffey
Shannon Simpson

FRESHMEN

Beverly Davis
Elizabeth Gilmer
Martharene Pitts
Jane Sturgeon





Organizations



Joe Patrick

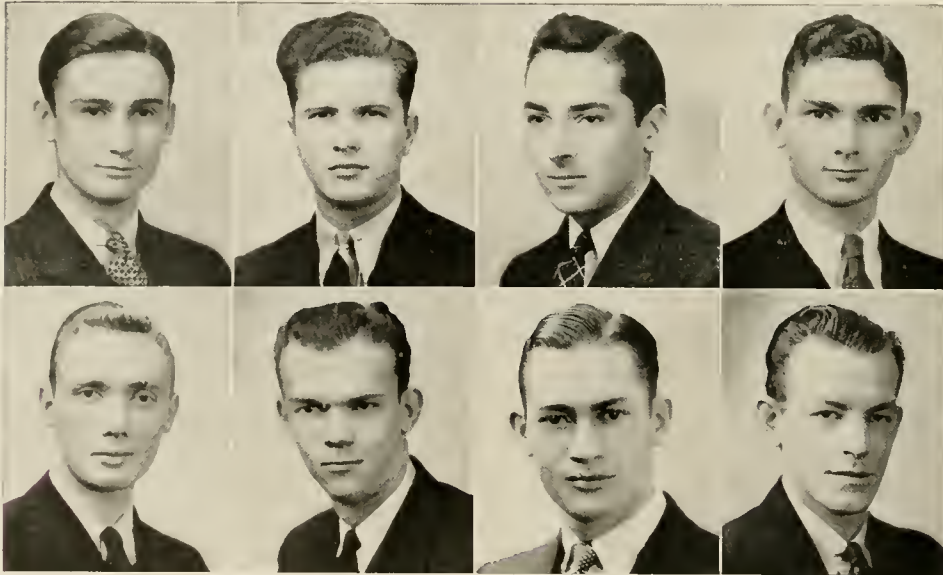
THE PAC SAC STAFF

J. E. PATRICK
Editor

PATRICK

F. S. LOVE.....*Associate Editor*
G. E. PLUNKETT.....*Associate Editor*
B. W. LEGARE.....*Senior Class Editor*
E. A. JOHNSON.....*Junior Class Editor*

R. F. BLACK...*Sophomore Class Editor*
T. T. COLEMAN.....*Art Editor*
M. M. HEMPHILL...*Advertising Manager*
J. B. PENLAND.....*Athletics Editor*



LOVE
BLACK

PLUNKETT
COLEMAN

LEGARE
HEMPHILL

JOHNSON
PENLAND

• • the Pac Sac nineteen thirty-seven •

One Hundred Eighty-six

thirty-seven •

THE PAC SAC STAFF

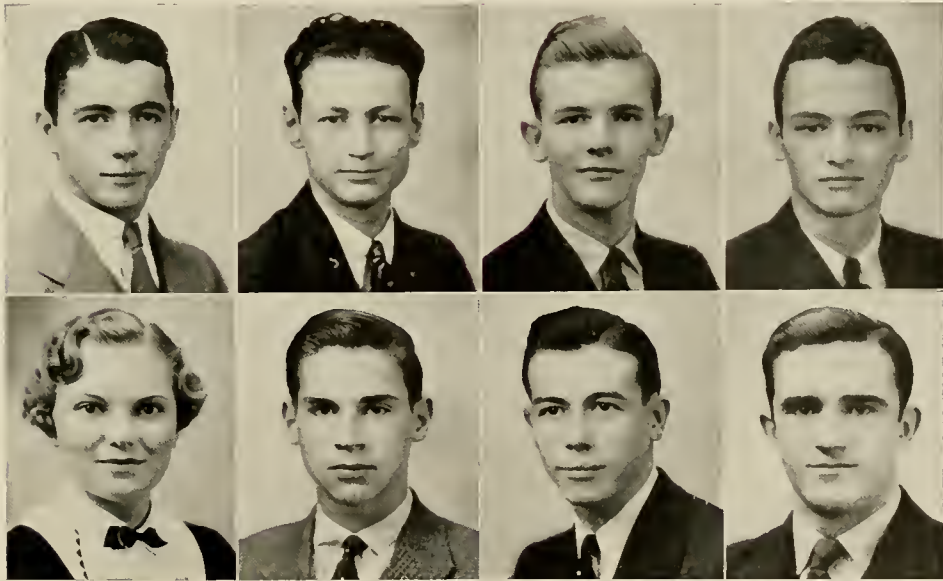
J. K. COLLINGS
Business Manager



COLLINGS

JOHN WOODWARD...*Asst. Sports Editor*
M. E. NORTON...*Organizations Editor*
J. M. WYLIE...*Asst. Adv. Manager*
MAX JONES...*Asst. Adv. Manager*

JOYCE PITTS*Typist*
WILLIAM GILMORE...*Asst. Business Mgr.*
M. R. RITCH...*Asst. Business Mgr.*
E. W. EVANS...*Associate Editor*



WOODWARD
PITTS

NORTON
GILMORE

WYLIE
RITCH

JONES
EVANS



THE BLUE STOCKING STAFF

F. S. LOVE
Editor

LOVE

E. A. JOHNSON.....*Managing Editor*
 J. E. PATRICK.....*Associate Editor*
 J. B. PENLAND.....*Sports Editor*
 JOHN WOODWARD...*Asst. Sports Editor*
 J. B. HAFLEY.....*Asst. Sports Editor*

B. W. LEGARE.....*R. O. T. C. Editor*
 KEITT DARBY.....*Feature Editor*
 L. G. HECKLE.....*Asst. Feature Editor*
 FRANCES SPRATT.....*Literary Editor*
 E. F. MACLEOD.....*Y. M. C. A. Editor*



JOHNSON
LEGARE

PATRICK
DARBY

PENLAND
HECKLE

WOODWARD
SPRATT

HAFLEY
MACLEOD

the Dec Sac nineteen thirty-seven

One Hundred Eighty-eight

thirty-seven

THE BLUE STOCKING STAFF

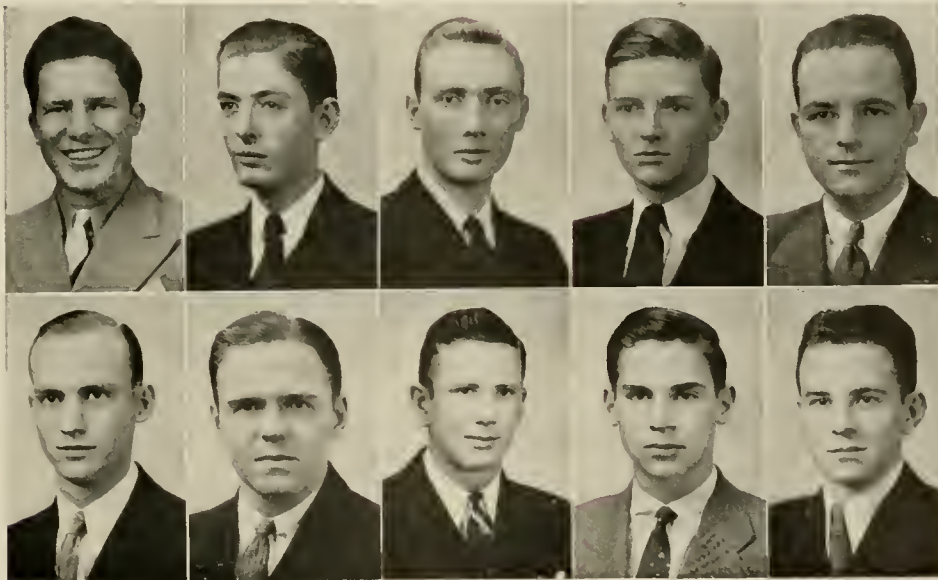
M. W. BIRD
Business Manager



BIRD

D. W. DAVIS.....*Asst. Feature Editor*
 S. B. CAMPBELL...*Book Review Editor*
 R. F. BLACK.....*Organizations Editor*
 J. C. BONNER.....*Advertising Manager*
 F. E. PROPST...*Asst. Business Manager*

C. H. MCLEOD...*Asst. Features Editor*
 J. K. COLLINGS...*Asst. Features Editor*
 J. R. THOMASON...*Asst. Circulation Mgr.*
 WILLIAM GILMORE...*Asst. Adv. Mgr.*
 L. J. HAMMEL...*Circulation Manager*



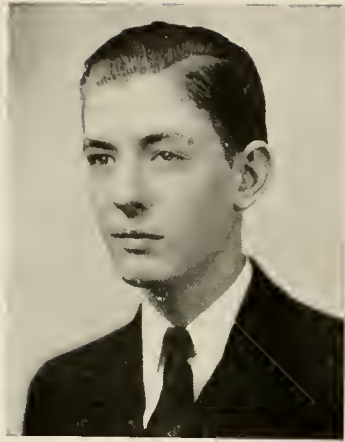
DAVIS
 MCLEOD

CAMPBELL
 COLLINGS

BLACK
 THOMASON

BONNER
 GILMORE

PROPST
 HAMMEL



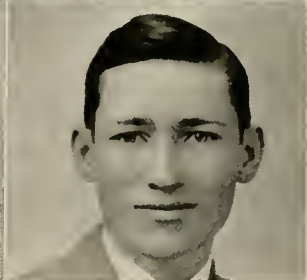
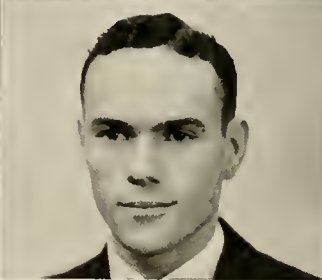
THE COLLEGIAN STAFF

S. B. CAMPBELL
Editor

CAMPBELL

F. S. LOVE.....*Associate Editor*
 C. H. McLEOD.....*Managing Editor*
 W. P. JACOBS, JR.....*Art Editor*

KEITT DARBY.....*Features Editor*
 L. G. HECKLE }*Contributors*
 J. A. CHAPMAN }



LOVE
DARBY

HECKLE
McLEOD

JACOBS
CHAPMAN

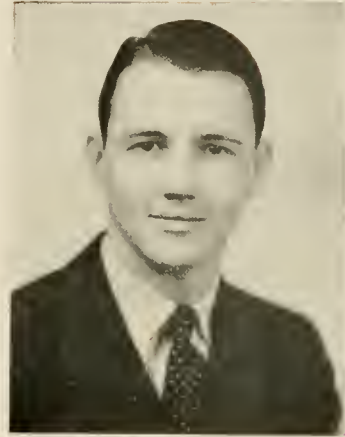
• • the Pac Sac nine

teen thirty-seven •

One Hundred Ninety

THE COLLEGIAN STAFF

J. R. McALPINE
Business Manager

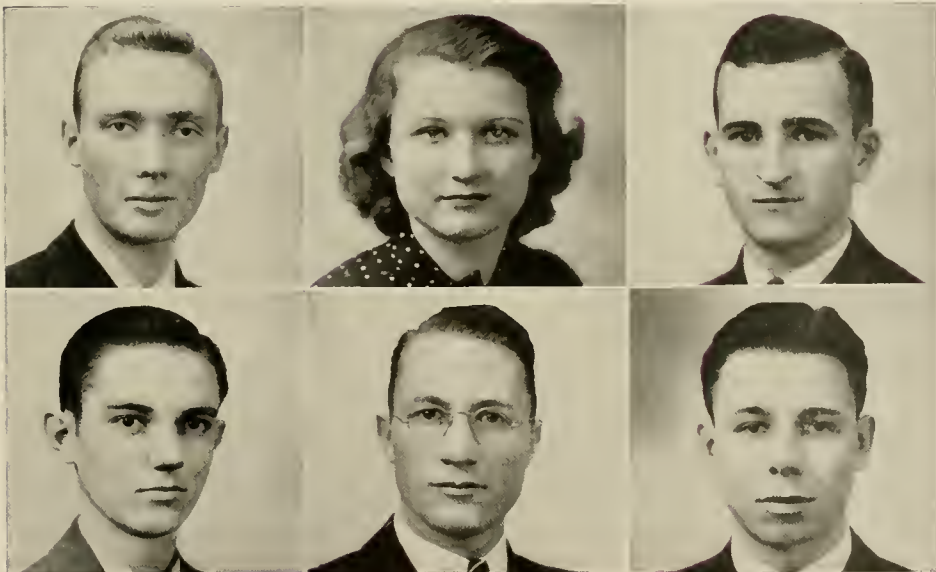


McALPINE

R. F. BLACK
POLLY ROBERT
J. B. HAFLEY
W. C. KELLER

.....Contributors

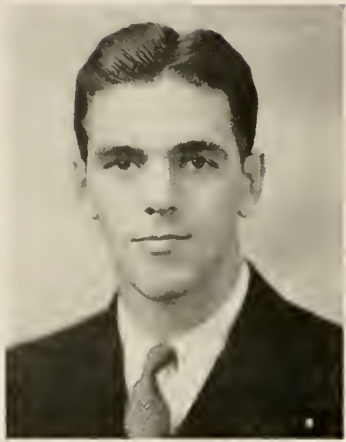
J. D. HUGHES..... *Asst. Business Mgr.*
S. CROKER..... *Asst. Business Mgr.*



BLACK
HAFLEY

ROBERTS
KELLER

HUGHES
CROKER



STUDENT GOVERNMENT

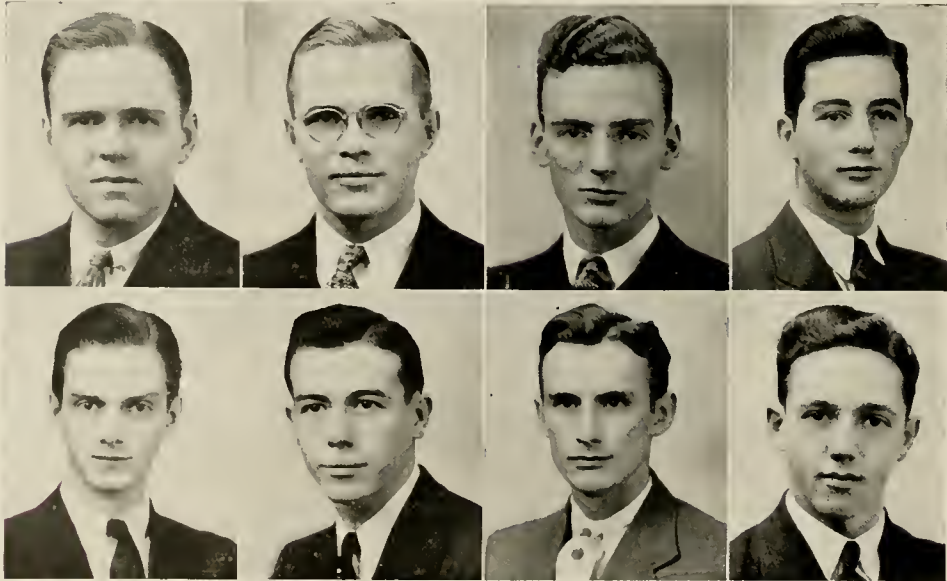
R. A. SHOEMAKER

Student Body President

SHOEMAKER

J. K. COLLINGS...*Student Body V.-Pres.*
 J. E. PATRICK*Senior Councilman*
 J. M. COMMANDER*Jr. Councilman*
 J. A. WITHERSPOON*Jr. Councilman*

F. R. JOHNSTON . .*Sec. of Student Body*
 M. R. RITCH . .*Sophomore Councilman*
 VIRGIL ST. JOHN*Soph. Councilman*
 JAMES CARROLL . .*Freshman Councilman*



COLLINGS
JOHNSTON

PATRICK
RITCH

COMMANDER
ST. JOHN

WITHERSPOON
CARROLL

• • the Pac Sac Nineteen thirty-seven •

One Hundred Ninety-two

teen thirty-seven •

Y. M. C. A. CABINET

W. C. KELLER
President

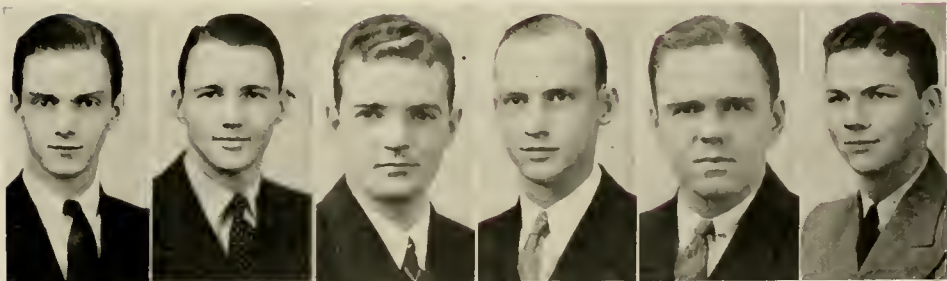


KELLER

CABINET MEMBERS

F. R. Johnston
 J. R. McAlpine
 Harris Gray
 C. H. McLeod
 J. K. Collings
 M. C. Patterson

E. F. MacLeod
 H. G. Wardlaw
 R. W. Williams
 C. B. Holcombe
 T. W. Newland



JOHNSTON
 MACLEOD

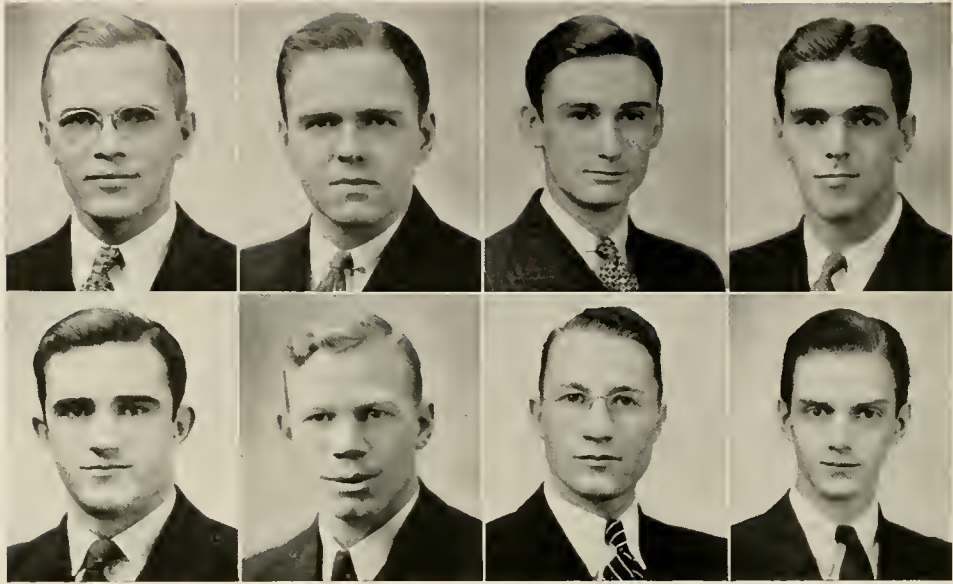
MICALPINE
 WARDLAW

GRAY
 WILLIAMS

MCLEOD
 HOLCOMBE

COLLINGS
 NEWLAND

PATTERSON



PATRICK
EVANS

COLLINGS
CAPPELMANN

LOVE
KELLER

SHOEMAKER
JOHNSTON

BLUE KEY



NATIONAL HONOR FRATERNITY
FOUNDED 1924

OFFICERS

J. E. PATRICK *President*
 F. S. LOVE *Vice-President*
 J. K. COLLINGS *Secretary-Treasurer*

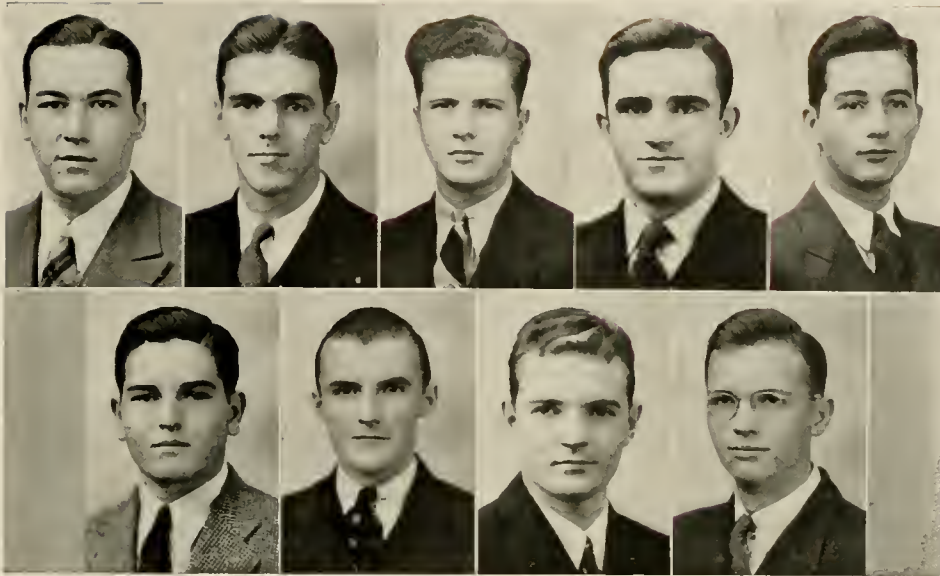
MEMBERS

R. A. Shoemaker	F. R. Johnston
E. W. Evans	J. R. McAlpine, III
C. M. Cappelmann	S. B. Campbell, Jr.
W. C. Keller	C. H. McLeod

the Pac Sec nineteen

One Hundred Ninety-four
 teen thirty-seven •

the Pac Sac nineteen
 teen thirty-seven



WALLACE SHOEMAKER PLUNKETT EVANS WITHERSPOON
 BLALOCK MANN GRAY BRIGGS

CHI BETA PHI



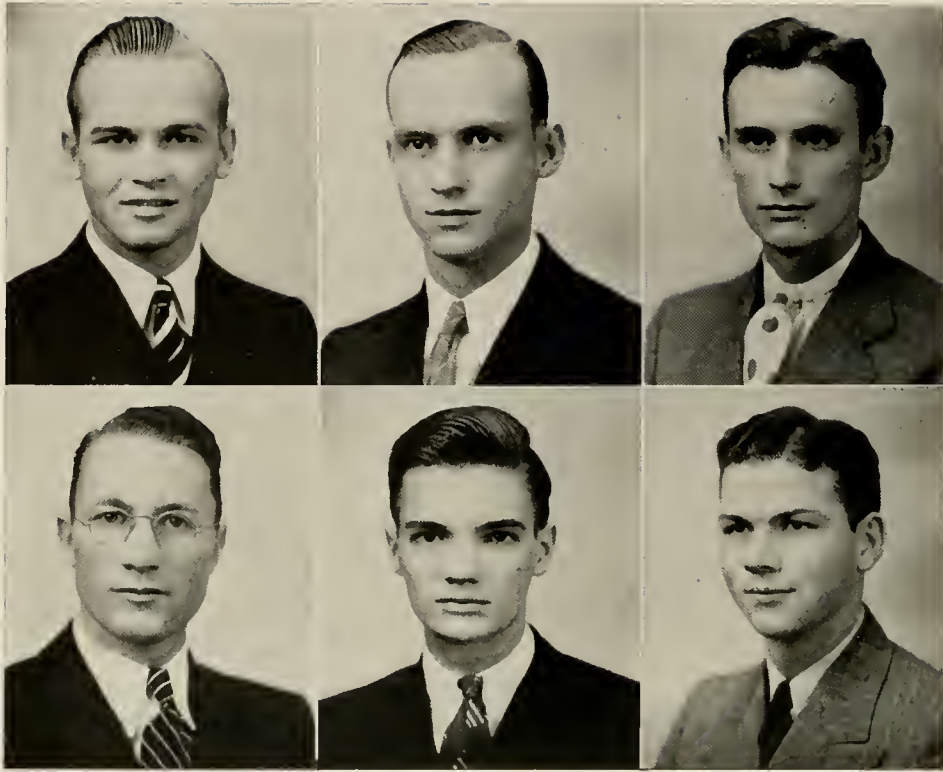
HONORARY SCIENTIFIC FRATERNITY
 FOUNDED 1916

OFFICERS

- F. T. WALLACE *President*
 R. A. SHOEMAKER *Vice President*
 G. E. PLUNKETT *Corresponding Secretary*
 J. A. WITHERSPOON *Recording Secretary*
 H. F. BLALOCK *Treasurer*

MEMBERS

- | | |
|----------------|----------------|
| E. W. Evans | A. J. Briggs |
| D. M. Mann | R. W. Forehand |
| Harris Gray | M. E. Norton |
| F. R. Johnston | Keitt Darby |



WARDLAW
KELLER

MCLEOD
MORRISON

ST. JOHN
PATTERSON

DELTA CHI ALPHA



NATIONAL CHRISTIAN LEADERSHIP FRATERNITY

OFFICERS

H. G. WARDLAW *President*
 C. H. MCLEOD *Vice-President*
 VIRGIL ST. JOHN *Secretary-Treasurer*

MEMBERS

W. C. Keller

M. C. Patterson

D. M. Morrison

One Hundred Ninety-six

the Pac Sac nineteen thirty-seven

the Pac Sac nineteen thirty-seven

• the Pac Sac nineteen
thirty-seven •



CAMPBELL



PATRICK

SIGMA KAPPA ALPHA

HONORARY SCHOLASTIC FRATERNITY

MEMBERS

S. B. Campbell, Jr.
J. E. Patrick

Frances Spratt

E. A. Johnson
C. D. Conrad



HAP GRAY AND HIS COLLEGIANS

- "HAP" GRAY *Director and First Trumpet*
- "MILLIE" WHITTEN *Vocalist*
- "BABY RAY" SHOEMAKER *First Saxophone*
- "CARMEN" MANN *Tenor Saxophone*
- "HARRY" SHAMIART *Tenor Saxophone*
- "CRISCO" COUSINS *Third Saxophone*
- "SHEFFIELD" HEETH *Third Trumpet*
- "DOODIE" CLARK *Second Trumpet*
- "BUCK" PATTERSON *Trombone*
- "TONY" SMITH *Guitar*
- "FATS" WALLACE *Bass Horn*
- "BUSTER" McIKTOSH *Traps*
- "MALICIOUS" DARBY *Piano*

• the Pac Sac nineteen

One Hundred Ninety-eight
thirty-seven •

the Pac Sac nineteen thirty-seven



GLEE CLUB

DR. STEPHEN M. HUNTLEY.....Director
 J. K. COLLINGS.....President
 HARRIS GRAY.....Manager
 A. K. DARBY.....Pianist

First Tenors

J. K. Collings
 G. E. Plunkett

T. W. Newland
 J. M. Wylie

J. R. McAlpine

Second Tenors

J. D. Hughes
 Harris Gray
 W. D. Hart
 W. C. McSween

T. T. Coleman
 R. W. Williams
 R. B. Roach
 R. H. Worrell

Lewis Norwood

First Bass

M. C. Patterson
 W. L. Cousins
 G. S. Beatty

I. E. Combs
 W. A. Hansell
 J. A. Cunningham

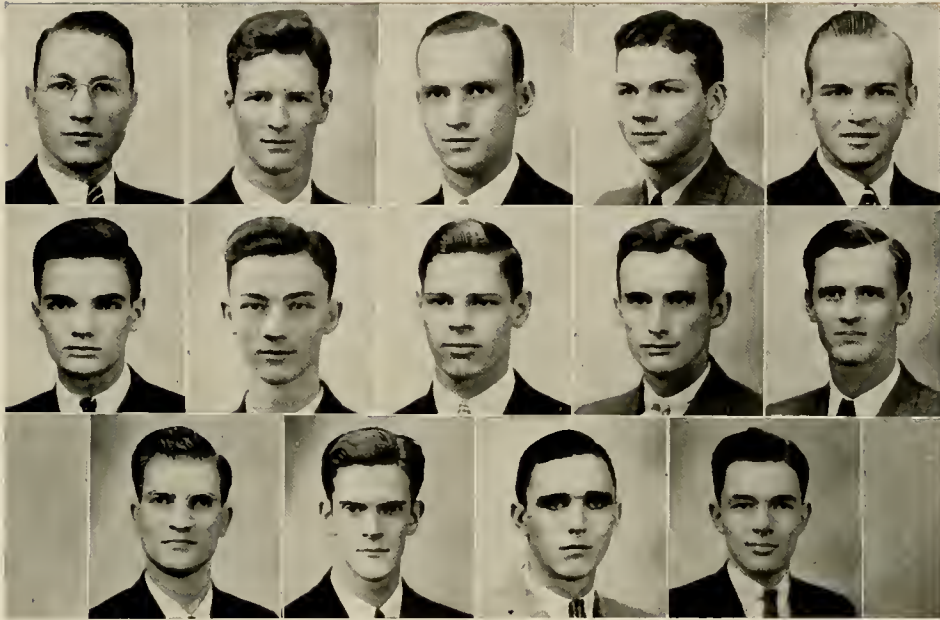
Second Bass

H. G. Wardlaw
 M. M. Hemphill

N. S. Heeth
 N. A. Wilson

W. A. Smith

the Pac Sac nineteen thirty-seven



KELLER
MORRISON
HART

BURNS
HUGHES
LIPSEY

MCLEOD
POTTER
WILKERSON

PATTERSON
ST. JOHN

WARDLAW
HARRINGTON
HANSELL

MINISTERIAL CLUB

OFFICERS

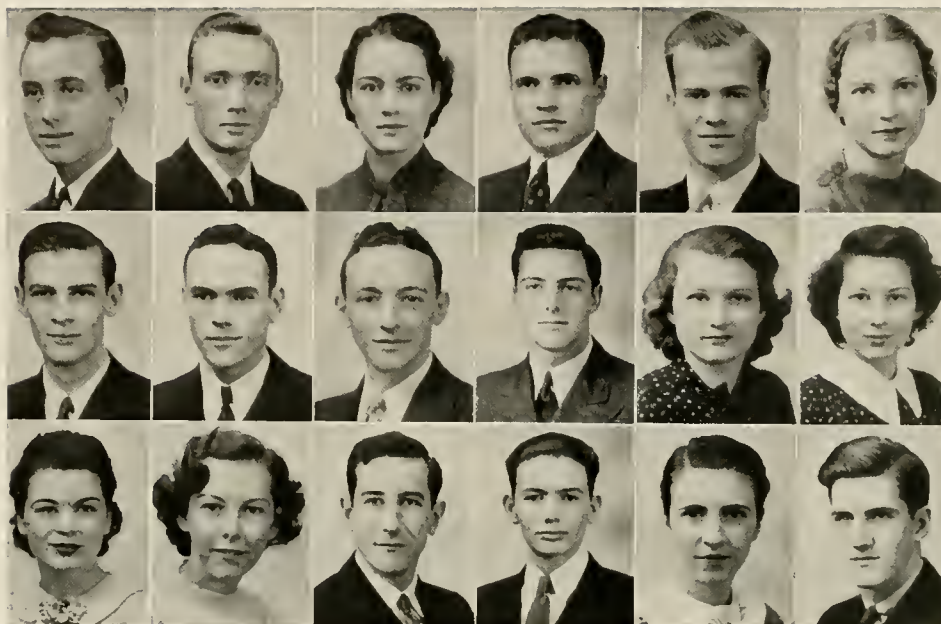
C. H. MCLEOD *President*
 M. C. PATTERSON *Vice-President*
 D. M. MORRISON *Secretary-Treasurer*

MEMBERS

W. C. Keller
 W. P. Burns
 H. G. Wardlaw
 R. D. Hughes
 Wayne Potter

Virgil St. John
 R. C. Harrington
 W. D. Hart
 S. T. Lipsey
 W. H. Wilkerson

W. A. Hansell



MACLEOD	BLACK	WISE	WILLIAMS	NEWLAND	MCLEOD
SMITH	HECKLE	MCELROY	BEATTY	ROBERTS. P.	ROBERTS. A.
MAHAFFEY	McGEE	CALDWELL	DINGEMAN	SHAW	JACOBS

DRAMATIC CLUB

OFFICERS

E. F. McLEOD	<i>President</i>
R. F. BLACK	<i>Vice-President</i>
R. W. WILLIAMS	<i>Secretary-Treasurer</i>

MEMBERS

Myra Wise	A. R. McElroy	Elizabeth McGee
T. M. Newland	G. S. Beatty	Ralph Caldwell
Verna McLeod	Pauline Roberts	D. R. Dingeman
S. P. Smith	Adelaide Roberts	Frances Shaw
L. G. Heckle	Helen Mahaffey	W. P. Jacobs

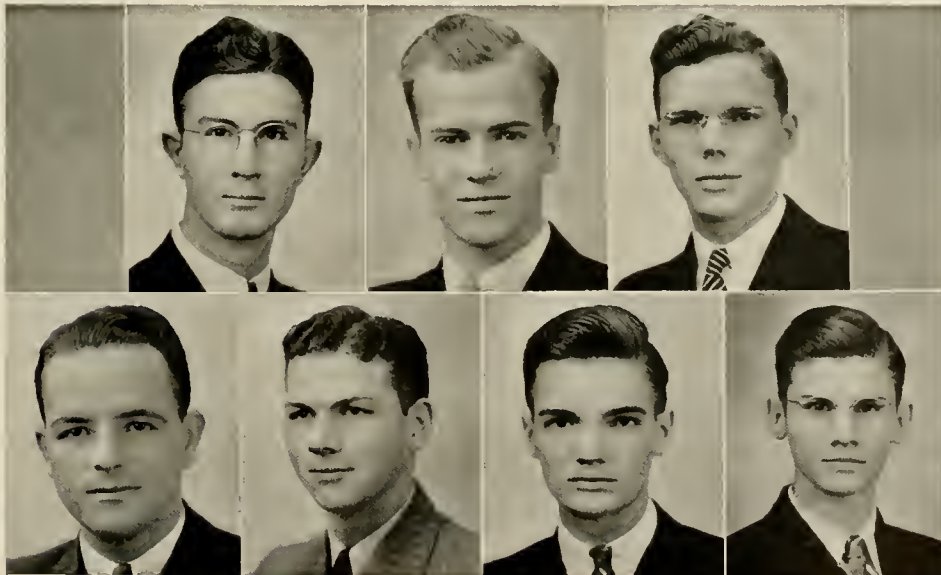
the Pac Sac nineteen

the Pac Sac nineteen thirty-seven



THE COLLEGE CANTEEN

H. C. GARRETT	Manager
T. W. NEWLAND	}	Assistant Managers
W. E. POPE		
F. E. PROPST	}	Clerks
M. C. PATTERSON		
D. M. MORRISON		
J. GILLILAND		



PROPST GARRETT NEWLAND MORRISON POPE GILLILAND

PATTERSON

ALMA MATER

*'Mong Piedmont hills of old S. C.
There stands a college called P. C.
She's dear to me, this old P. C.
Where every day is happy.*

*All honor to thy learned walls,
Thy campus and historic halls,
We'll sing thy praise through all our days,
Our well loved Alma Mater.*

CHORUS

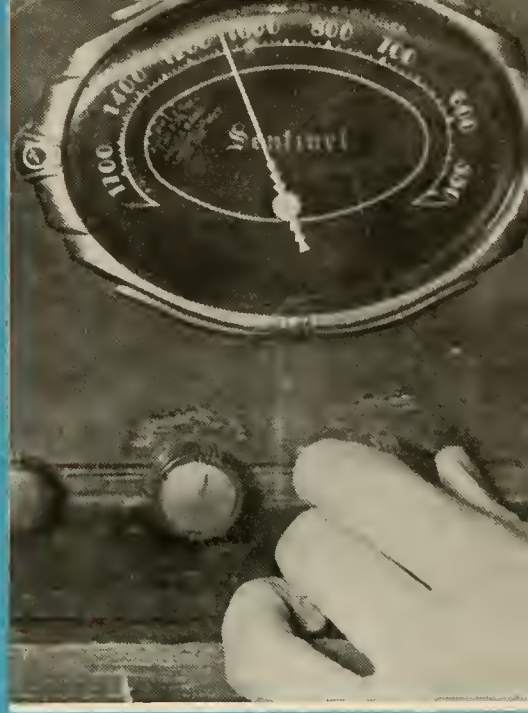
*P. C., P. C., how dear thou art to me,
P. C., P. C., we'll e'er be true to thee,
P. C., P. C., we'll ever sing thy praise,
We'll sing thy praise through all our days,
All hail to thee.*

• • the Pac Sac

nineteen

thirty-seven •

Two Hundred Four



Advertisements

“Sampson had the right idea about advertising. He took two columns and brought down the house.”

—CHARLESTON GAZETTE.

• the Pac Sac nineteen thirty-seven •

PRESBYTERIAN COLLEGE

A Liberal Arts College That Dares To Be Different

◆◆
It Offers an Individualized Education
To a Carefully Selected Student
Body of Three Hundred

◆◆
Nine Intercollegiate Sports . . . Three Splendidly
Rated Student Publications

◆◆
Bachelors Degrees in Arts, Sciences,
and Commerce Offered

◆◆
A Rich Life, an Abundant Life, a Life Full,
Refreshing, That Develops Leaders

◆◆
WILLIAM P. JACOBS

President

CLINTON, S. C.

P a C S a C P H O T O G R A P H S

1933 : 1934 : 1935 : 1936 : 1937

By

Nichols Studio



SPECIALLY E Q U I P P E D
FOR THE FINEST QUALITY
A N D M O S T E F F I C I E N T
S E R V I C E I N C O L L E G E
A N N U A L P H O T O G R A P H Y

C. E. NICHOLS

CLINTON, S. C.

• • the Pac Sac nineteen

Two Hundred Eight
teen thirty-seven •

M. S. BAILEY & SON, Bankers

We Invite Your Account

W. J. Bailey President G. L. Simpson.....Asst. Cashier
R. C. Adair..... Cashier R. G. Watson, Jr.....Teller
Mrs. Mac Adair.....Bookkeeper

Individual Responsibility More Than \$1,000,000

Fifty-one Years of Continuous Service

A p p r e c i a t i o n

The editors wish to take this opportunity to thank the business men who have cooperated in presenting this volume of The PaC SaC by publishing their advertisements herein.

We wish to urge the administration and the students to support these institutions which have so generously supported us.

CASINO AND BROADWAY THEATRES

Western Electric Sound System

The best is none too good for our patrons, and your patronage is appreciated at all times.

O. I. Sheely, Manager

Clinton, S. C.

THE STRAUS COMPANY

Richmond, Va.

*Kitchen and Dining Room
Supplies*

The Largest Equipment House
in the South

The 1937 PaC SaC

is bound in a

Kingscraft Cover

Kingsport Press, Inc.

Kingsport, Tenn.



For the Best Eats Visit . . .

CLINTON CAFE

Better Cooking

Snappy Service

Sanitary

Phone 9181

Clinton, S. C.



Founded 1812

**Union Theological
Seminary**

Richmond, Va.



Two fellowships for study
abroad, and three for study at
home, are awarded each year to
members of the graduating class
at Union Seminary.



B. R. Lacy, Jr., D.D.,

President

*"We do all kinds of PRINTING
except bad"*

Chronicle Publishing Co.

Publishers . Printers

Clinton, S. C.



Honest John's

Blue Stockingette

College Boys Always Welcome



the PaC SaC nineteen thirty-seven

Two Hundred Ten

nineteen thirty-seven

the Pac Sac nineteen thirty-seven

♦♦
WOLFSON
Trading Company

Manufacturers of
Military Uniforms and Equipment

684 Broadway, New York

♦♦

Columbia Theological Seminary

Decatur, Ga.



The Presbyterian Seminary of the
Southeast

Thoroughly Equipped Faculty

Splendid Library Resources

Select Student Body

Courses Leading to B.D. and Th.M.
Degrees

Quarter System Modern Buildings
Beautiful Campus Strategic Location

*Owned and Controlled by the Synods of Georgia, South Carolina,
Florida, Alabama, and Mississippi*

◆◆
Compliments . . .

D I X I M A I D
ICE CREAM D

. . . It's Better Made

Greenwood
Creamery Co.

◆◆

◆◆

HIPP & ADAIR

Clothes and
Furnishings for
College Men

Clinton, S. C.

◆◆

◆◆

"Insist on Lauces"

Sandwiches
Peanuts
Candies

by

The Lance Packing Co.
Charlotte, N. C.

◆◆

◆◆

Delicious . . .

Coca-Cola

. . . Refreshing

Greenwood Coca-Cola
Bottling Company
Greenwood, S. C.

◆◆

● ● the Pac Sac

nineteen

thirty-seven ●

Two Hundred Twelve

• the Pac Sac nineteen
thirty-seven • •

P. C. Boys always welcome

Smith's Pharmacy

*Drugs . . . Soda
School Supplies*

Clinton, S. C.

Compliments of

**Frontis Jewelry
Store**

and Gift Shoppe

Clinton, S. C.

Like P. C., "We Live to Serve" **PENNEY'S**
Visit Our Store and Feel At Home **IN CLINTON**

ROYAL CLEANERS

"Beautiful Dry Cleaning"

South Broad Street

Clinton, S. C.

JAKE PENLAND — JOE COMMANDER

Campus Representatives



D. E. TRIBBLE CO.

Clinton, South Carolina

Undertakers and Embalmers

Ambulance Service

Day Phone 94

Night Phone 24



*E*QUIPPED to supply your
every requirements in Art,
Photo-Engraving, Electrotyping
and Printing.



Jacobs Graphic Arts
Company

CLINTON, S. C.



Commercial Artists

Electrotypers

Photo-Engravers

Printers

• • the Pac Sac nine

teen thirty-seven •

Two Hundred Fourteen

● *the Pac Sac nineteen*
AUTOGRAPHS
thirty-seven ● ●

AUTOGRAPHS

• • the Pac Sac nineteen thirty-seven •

Two Hundred Sixteen

PRESBYTERIAN COLLEGE LIBRARY



3 5197 00118866 6

8

378.757PV

JSC

14052

PII - 1937

